



OpenOffice.org

Conference 2008 Beijing
世界开源大会



CREATED WITH LOTUS® SYMPHONY™



IBM Lotus Symphony Technical Overview

Ma Yong Lin

IBM



CREATED WITH LOTUS® SYMPHONY™



Agenda



- IBM Lotus® Symphony™ Overview
- Architecture of Symphony
- Integration of OpenOffice.org and Expedito
- Programmability
- Performance Improvement
- Reference



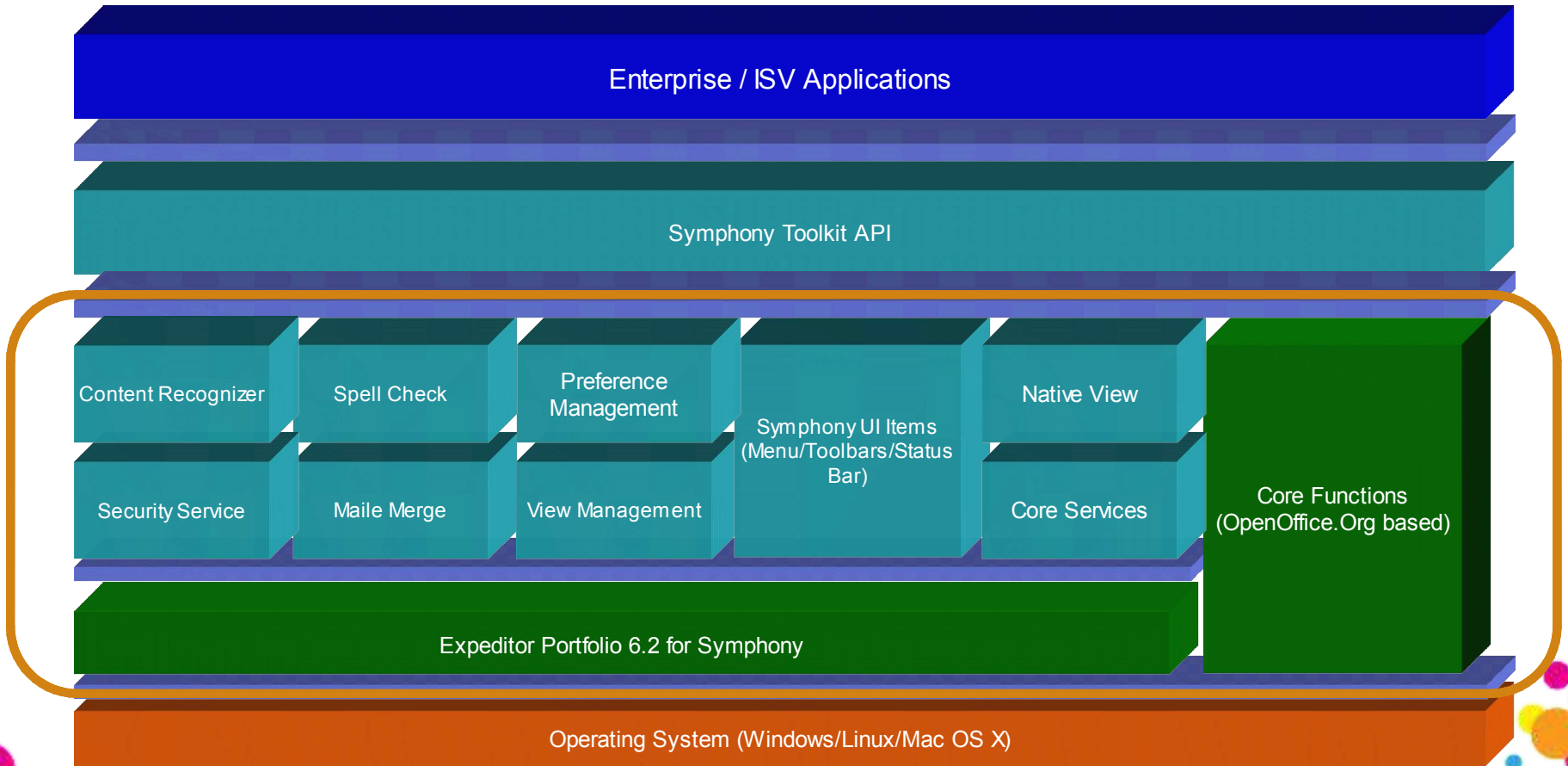
IBM Lotus® Symphony™ Overview



- A set of office productivity applications
 - Create, edit, share documents, spreadsheets, and presentations
 - Based on OpenOffice.org and Eclipse
 - Support OpenDocument Format (ODF)
 - Support Microsoft® Office and other formats
- Available at no charge to anyone and everyone
 - www.ibm.com/software/lotus/symphony
 - Web-based support and community forums

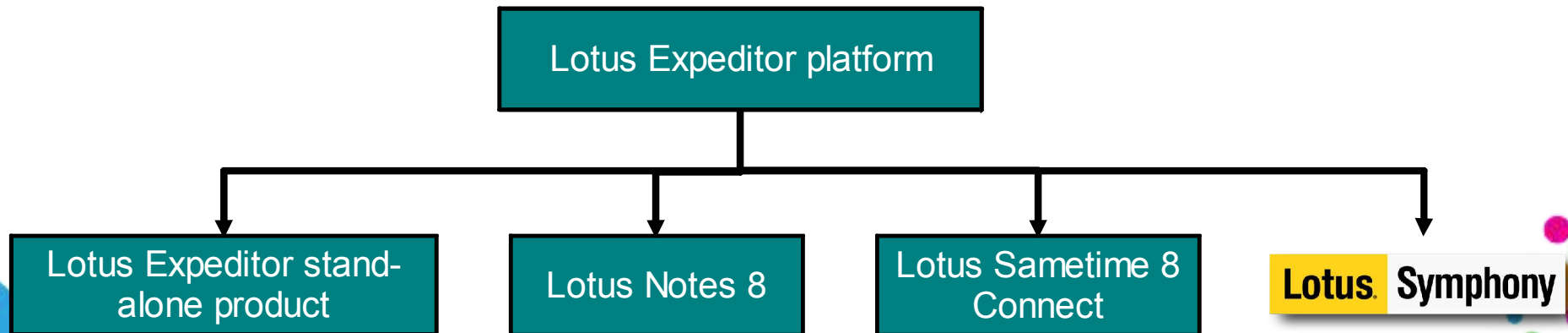


Architecture of Symphony



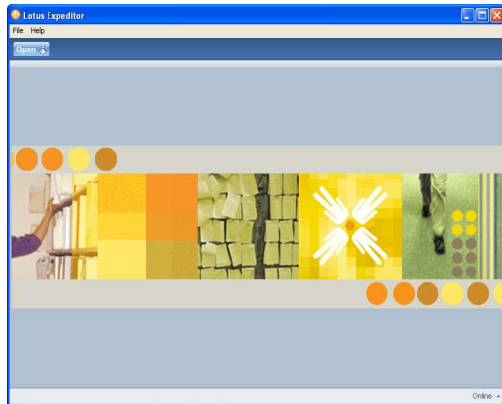
What is Expeditor?

- Common foundation for Lotus client-side products
- IBM adds a comprehensive set of services for building business applications. e.g. composite applications, component intercommunication, local web container, local relational database, enhanced user interface widgets, etc.
- Lotus Notes 8, IBM Lotus Sametime® 8, IBM Lotus Symphony® use a subset of the full Lotus Expeditor platform

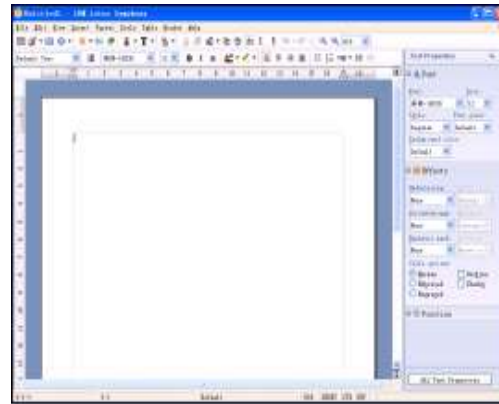


Expeditor Portfolio for Symphony

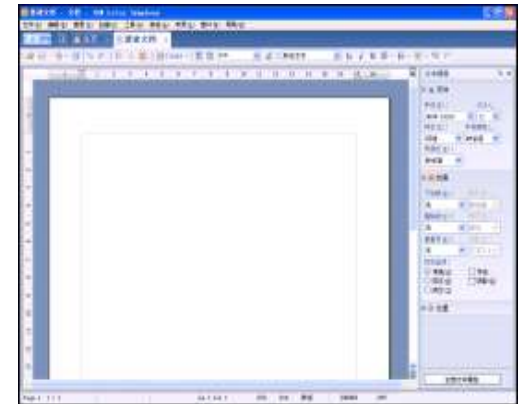
- Reduced footprint
- May extend platforms with additional Lotus Expeditor features



Lotus Expeditor



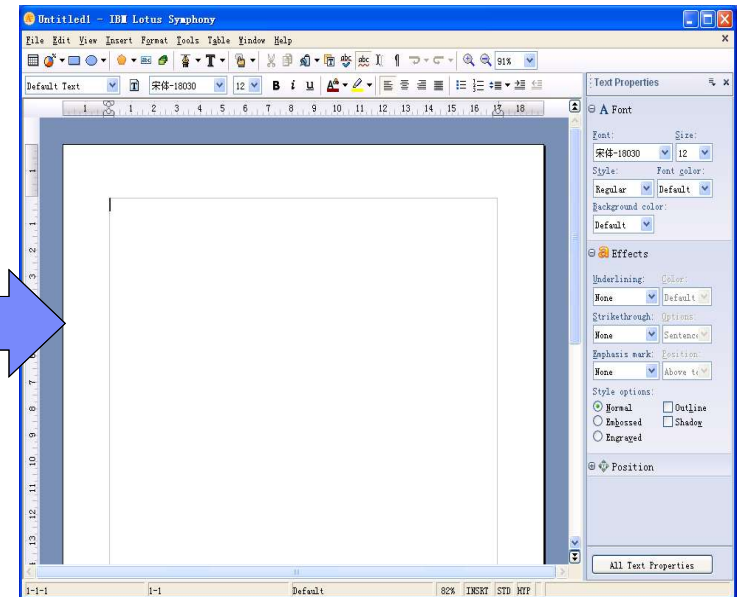
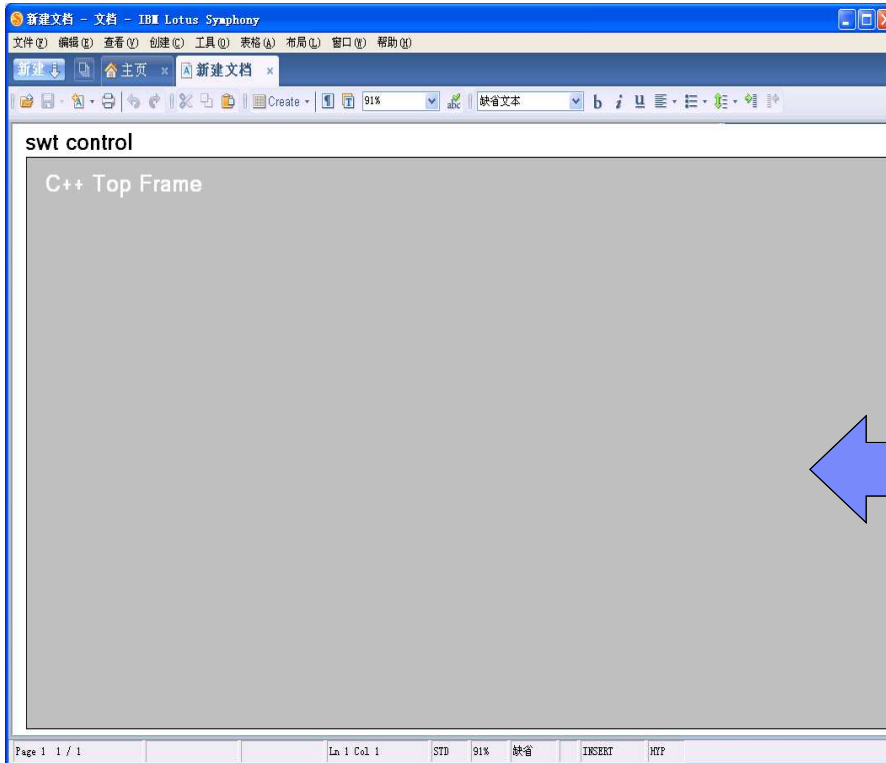
soffice.exe



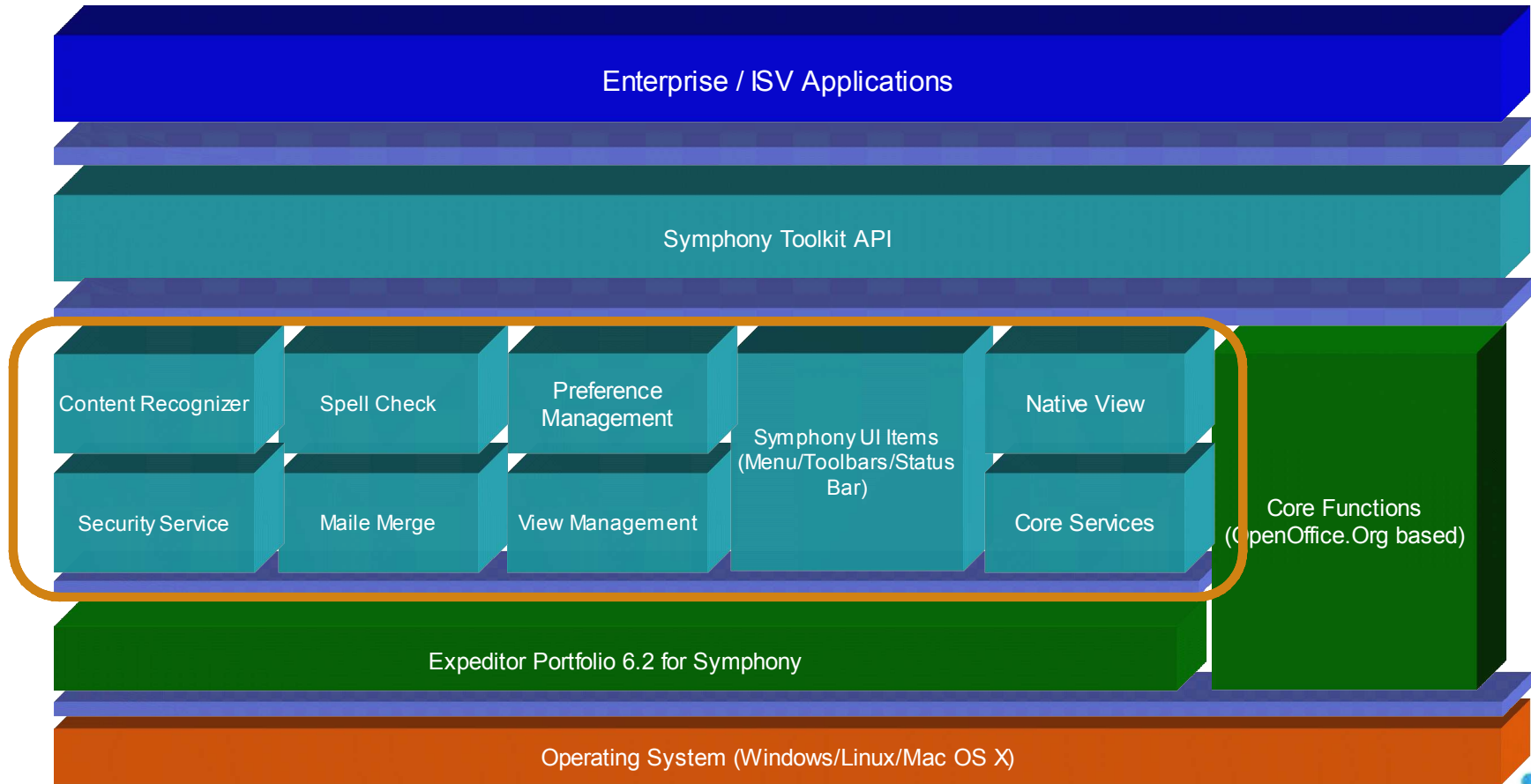
Symphony



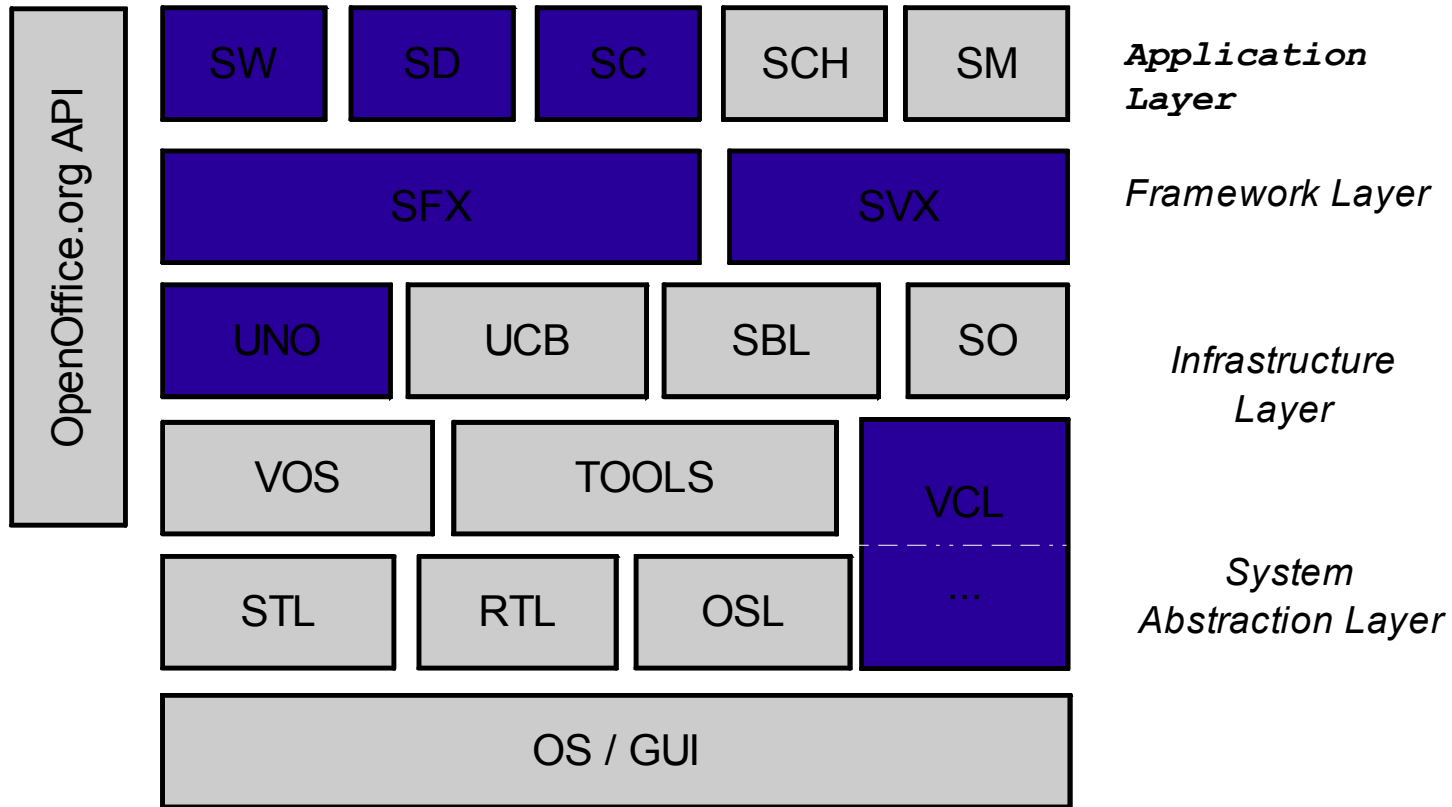
Window Reparenting



Architecture of Symphony



Core function improvement

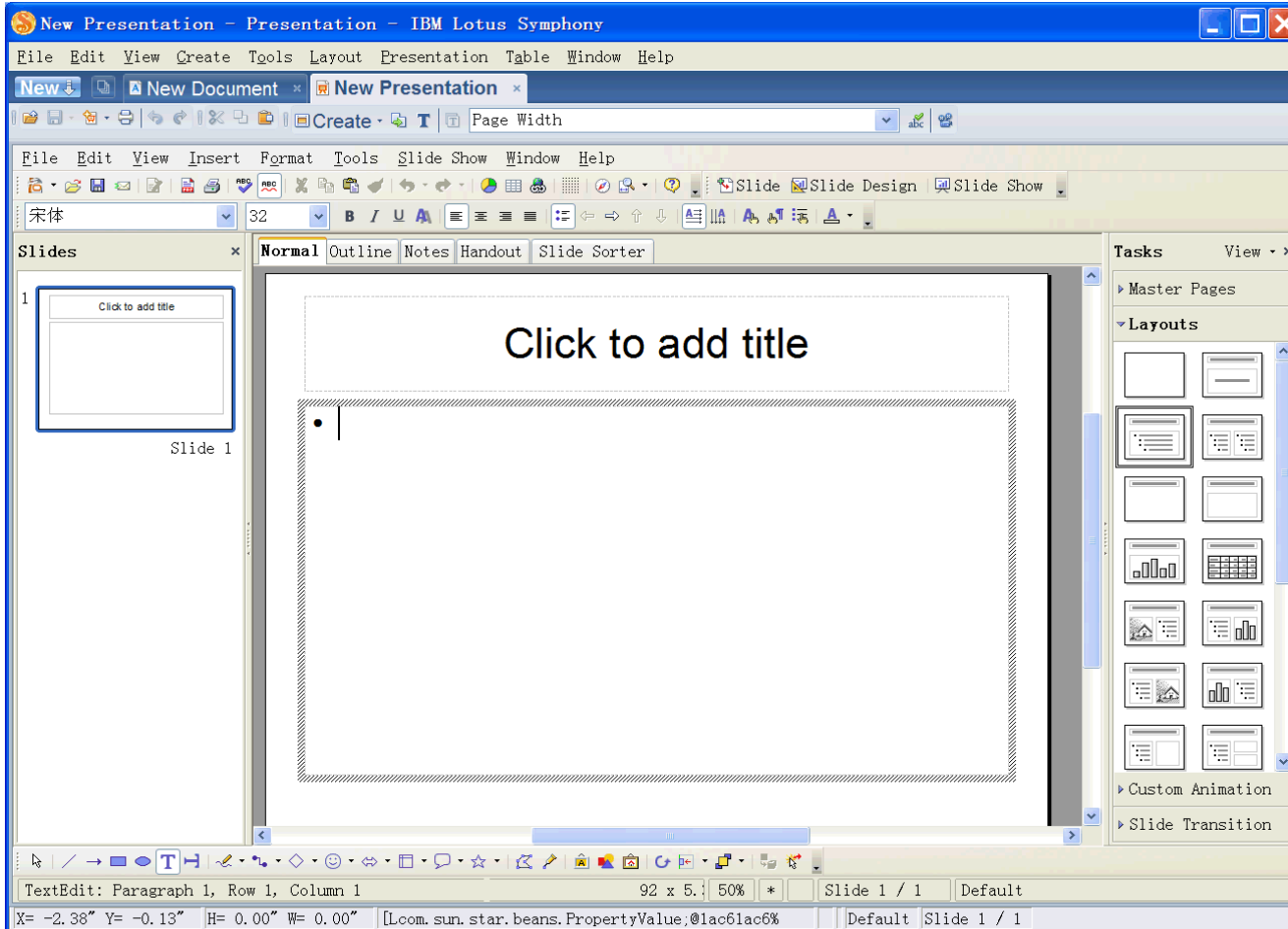


Improvement on C++ part

- Accessibility
- Build
- I18N and Bidi Support
- Interoperability Improvement
- ODF Support
- Performance Improvement
- SmartSuite Filters
- Stability Improvement
- Usability Improvement

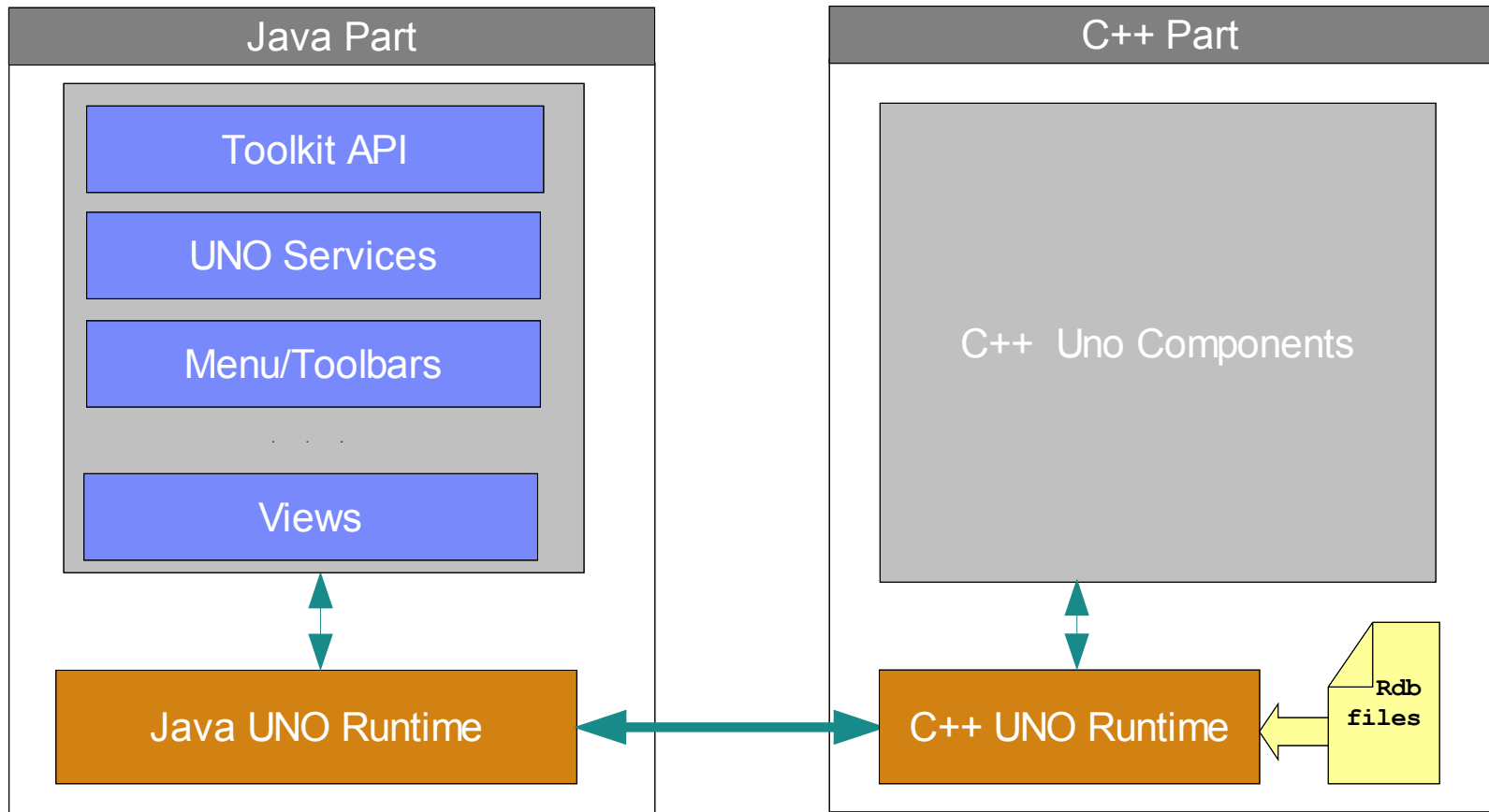


OpenOffice.org in Symphony UI

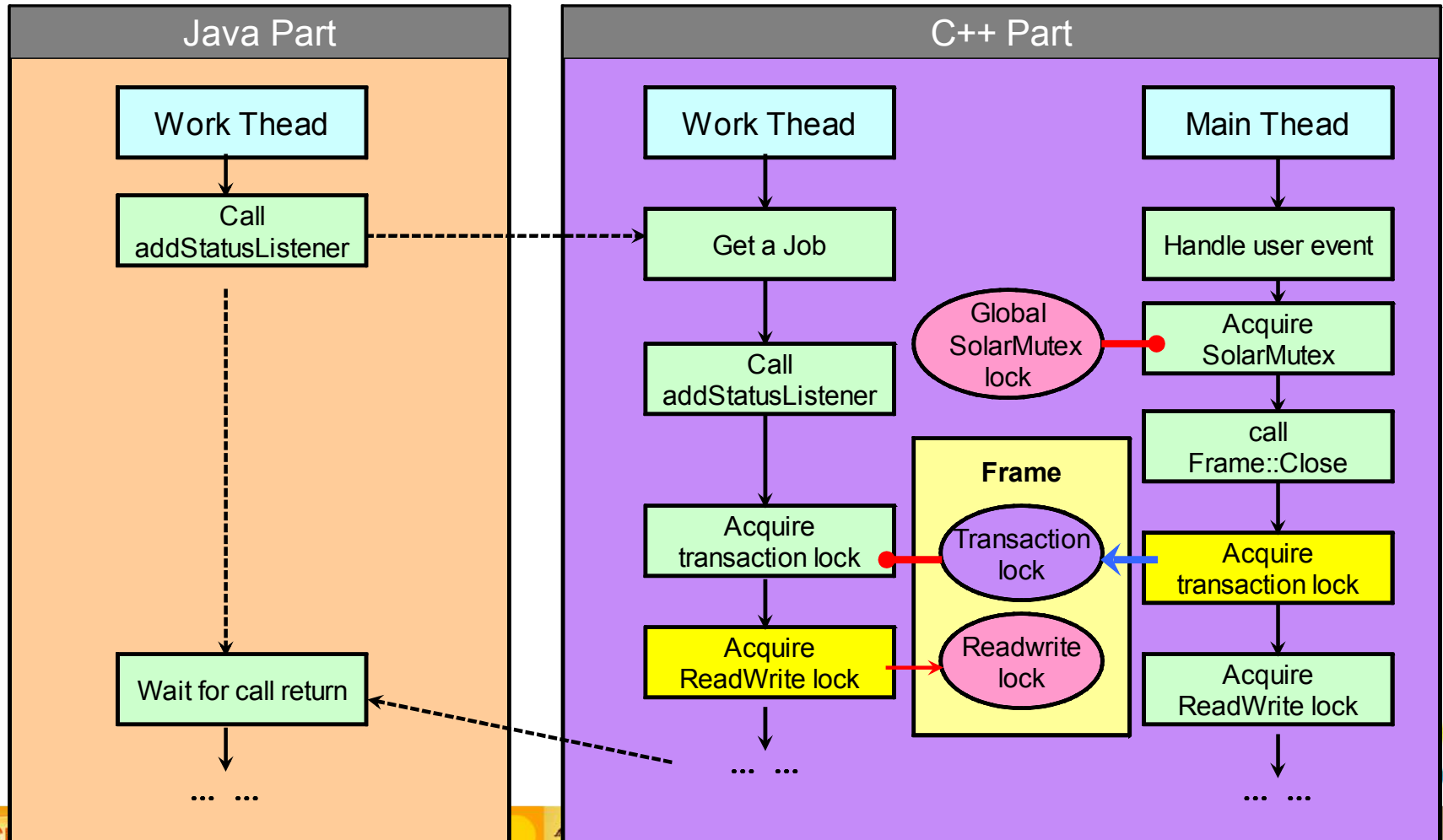


CREATED WITH LOTUS[®] SYMPHONY™

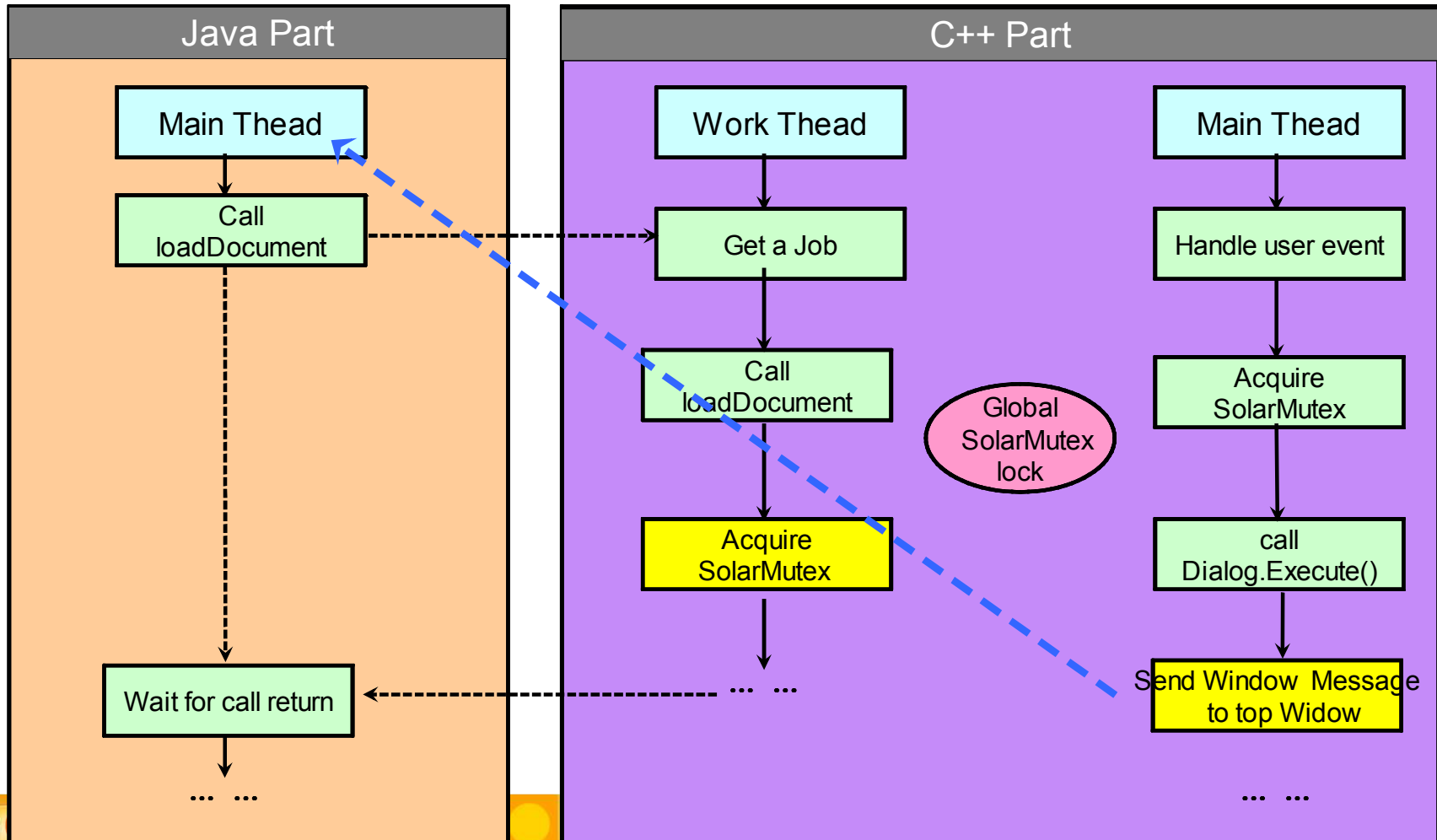
Integration of OpenOffice.org and Expedito



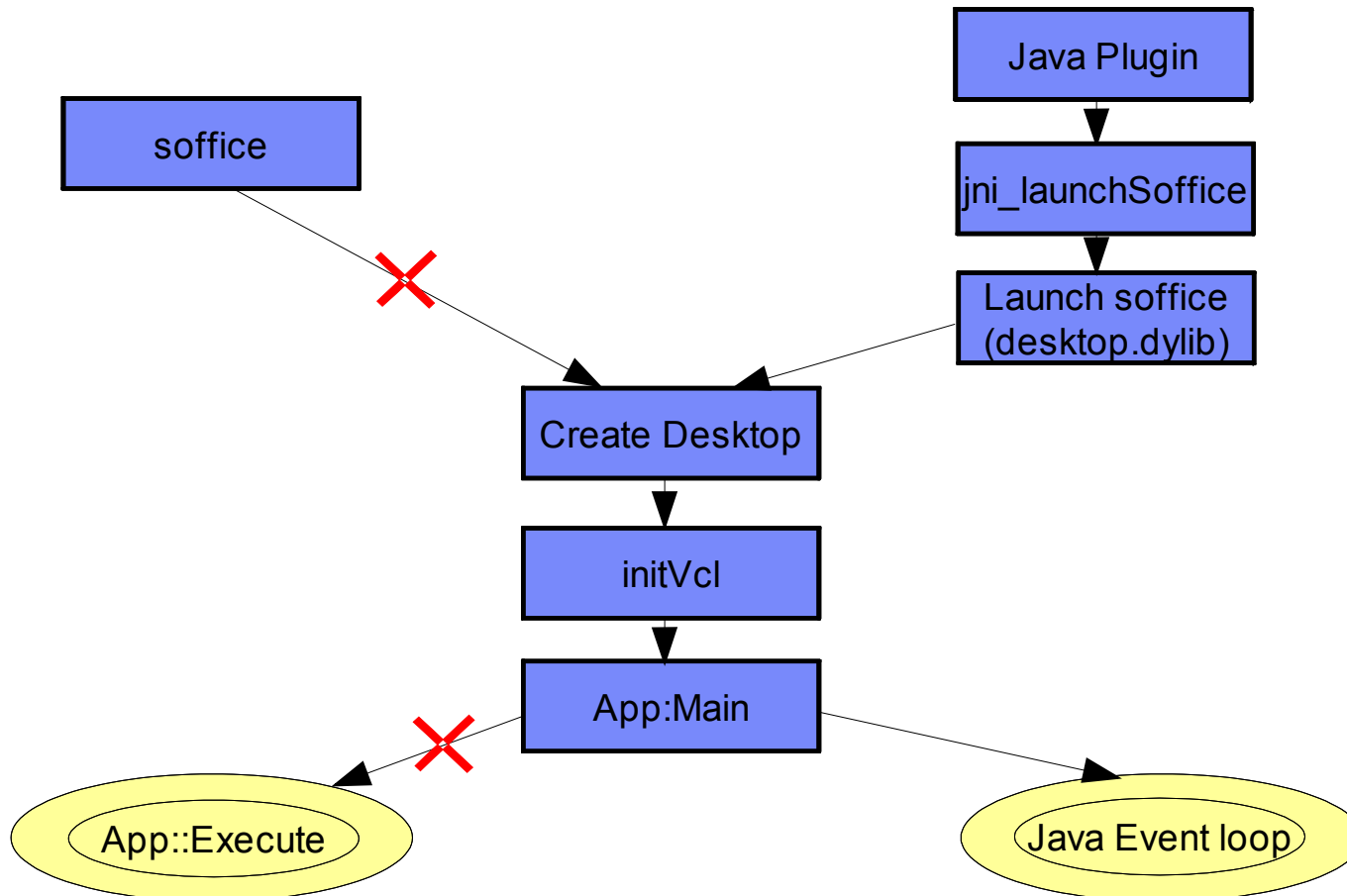
Deadlock Problems: Example one



Deadlock Problems: Example two



Symphony on Mac OS X – Single Process



Programmability



- Extend Symphony functions
- Provides customer the capability to extend Symphony for a particular customer solution
 - Java API Support
 - VBA Support
 - Lotus Script Support



Performance Improvement



- Asynchronous Document Loading
- Library Merge
- Quick Save
- Preload or Quick Start



Reference: Symphony Sessions



- Lotus Symphony extension model
- Accessibility in Symphony
- Symphony performance improvement best practices
- Introduction of SMIL Animation and Implementation in IBM Lotus Symphony
- Properties Sidebar, make editing much easier
- Learn more about office users - Feature usage study by document element statistics
- Visualize Writer Document Structure for Productive Development



Thank
YOU

