



Getting Started Guide

Chapter 10
***Printing, Exporting,
and E-mailing***

Copyright

This document is Copyright © 2005–2008 by its contributors as listed in the section titled **Authors**. You may distribute it and/or modify it under the terms of either the [GNU General Public License](#), version 3 or later, or the [Creative Commons Attribution License](#), version 3.0 or later.

All trademarks within this guide belong to their legitimate owners.

Authors

Agnes Belzunce
Michael Kotsarinis
Peter Kupfer
Robert Scott
Janet M. Swisher
Jean Hollis Weber

Feedback

Please direct any comments or suggestions about this document to:
authors@user-faq.openoffice.org

Publication date and software version

Published 13 October 2008. Based on OpenOffice.org 3.0.



*You can download
an editable version of this document from
<http://oooauthors.org/en/authors/userguide3/published/>*

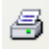
Contents

Copyright.....	2
Introduction.....	4
Quick printing.....	4
Controlling printing.....	4
Exporting to PDF.....	5
Quick export to PDF.....	5
Controlling PDF content and quality.....	5
General page of PDF Options dialog.....	6
Initial View page of PDF Options dialog.....	8
User Interface page of PDF Options dialog.....	8
Links page of PDF Options dialog.....	10
Security page of PDF Options dialog.....	10
Exporting to other formats.....	12
E-mailing documents.....	12
E-mailing a document to several recipients.....	13
Digital signing of documents.....	16

Introduction

This chapter provides general information about printing, exporting, and e-mailing documents from OOo.

Quick printing

Click the **Print File Directly** icon  to send the entire document to the default printer defined for your computer.

Note	You can change the action of the Print File Directly icon to send the document to the printer defined for the document instead of the default printer for the computer. Go to Tools > Options > Load/Save > General and select the Load printer settings with the document option.
-------------	--

Controlling printing

For more control over printing, use **File > Print** to display the Print dialog.

On the Print dialog, you can choose:

- Which printer to use (if more than one are installed on your system) and the properties of the printer—for example, orientation (portrait or landscape), which paper tray to use, and what paper size to print on. The properties available depend on the selected printer; consult the printer's documentation for details.
- What pages to print, how many copies to print, and in what order to print them. Use dashes to specify page ranges and commas or semicolons to separate ranges; for example: 1, 5, 11–14, 34–40. *Selection* is the highlighted part of a page or pages.
- What items to print. Click the **Options** button to display the Printer Options dialog.

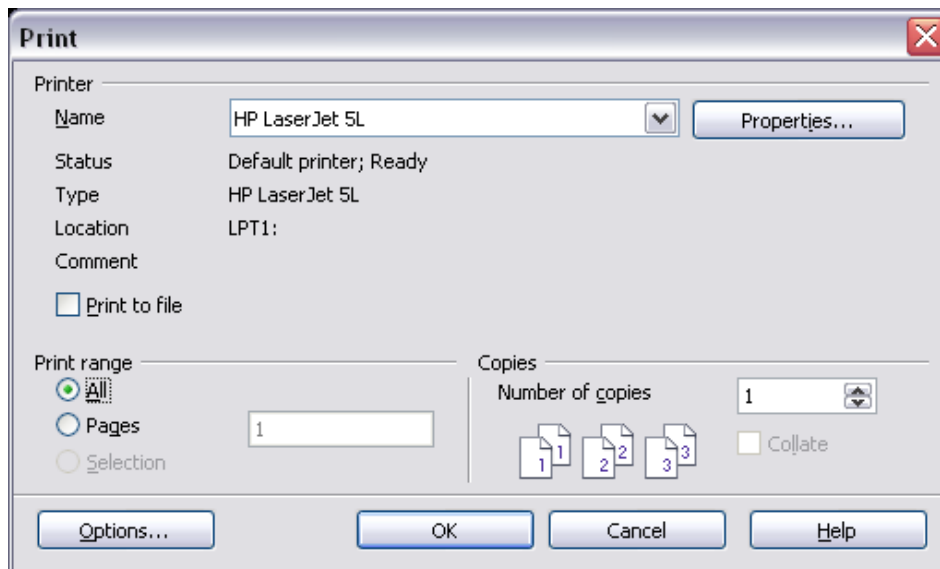


Figure 1. The Print dialog

Selections on the Printer Options dialog are different in Writer, Calc, Impress, and Draw, but in all cases they apply to this printing of this document only. For details, see the chapters on the various OoO components.


To specify default printing options, see Chapter 2 (Setting up OpenOffice.org) and the chapters on the various OoO components.

Exporting to PDF

OpenOffice.org can export documents to PDF (Portable Document Format). This industry-standard file format is ideal for sending the file to someone else to view using Adobe Reader or other PDF viewers.

The process and dialogs are the same for Writer, Calc, Impress, and Draw, with a few minor differences mentioned in this section.

Quick export to PDF

Click the **Export Directly as PDF** icon  to export the entire document using your default PDF settings. You are asked to enter the file name and location for the PDF file, but you do not get a chance to choose a page range, the image compression, or other options.

Controlling PDF content and quality

For more control over the content and quality of the resulting PDF, use **File > Export as PDF**. The PDF Options dialog opens. This dialog has five pages (General, Initial View, User Interface, Links, and Security).

Make your selections, and then click **Export**. Then you are asked to enter the location and file name of the PDF to be created, and click **Save** to export the file.

General page of PDF Options dialog

On the *General* page, you can choose which pages to include in the PDF, the type of compression to use for images (which affects the quality of images in the PDF), and other options.

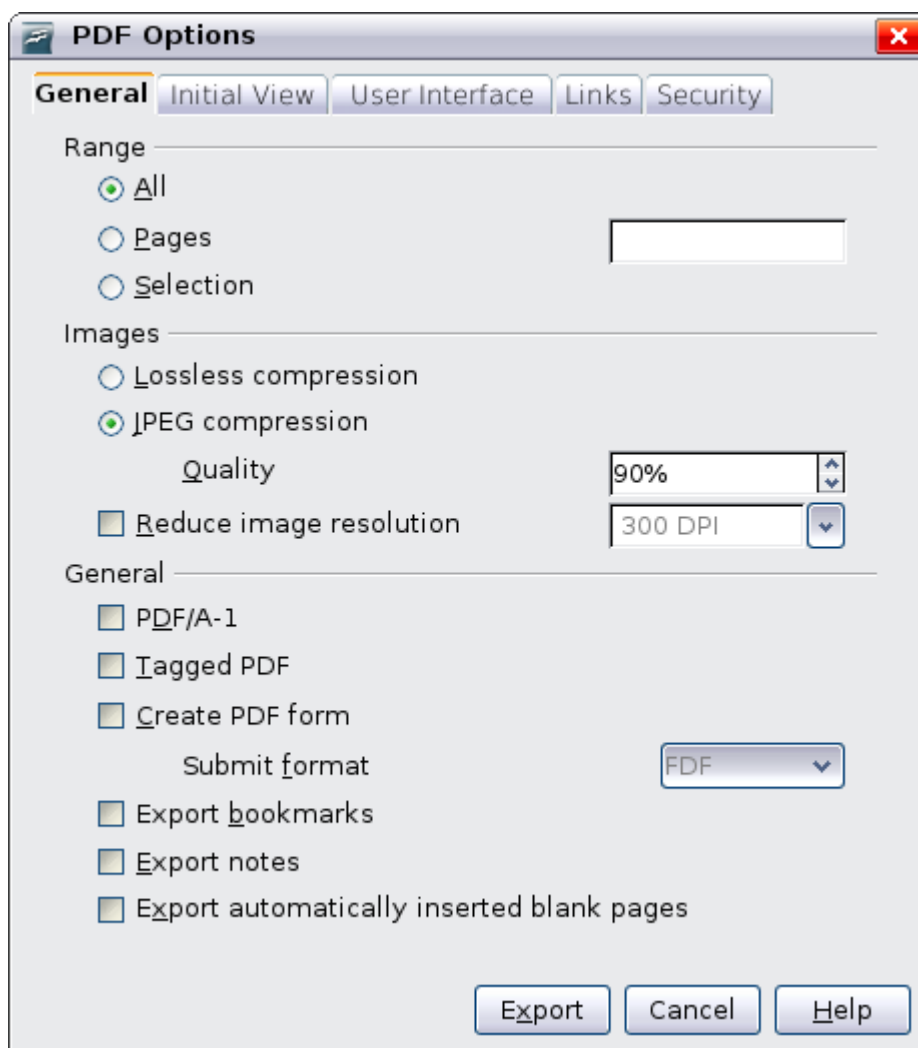


Figure 2: General page of PDF Options dialog

Range section

- **All:** Exports the entire document.
- **Pages:** To export a range of pages, use the format **3-6** (pages 3 to 6). To export single pages, use the format **7;9;11** (pages 7, 9, and 11). You can also export a combination of page ranges and single pages, by using a format like **3-6;8;10;12**.
- **Selection:** Exports whatever material is selected.

Images section

- **Lossless compression:** Images are stored without any loss of quality. Tends to make large files when used with photographs. Recommended for other images.
- **JPEG compression:** Allows for varying degrees of quality. A setting of 90% tends to work well with photographs (small file size, little perceptible loss of quality).
- **Reduce image resolution:** Lower-DPI (dots per inch) images have lower quality.

Note

EPS images with embedded previews are exported only as previews. EPS images without embedded previews are exported as empty placeholders.

General section

- **PDF/A-1:** PDF/A is an ISO standard established in 2005 for long-term preservation of documents, by embedding all the pieces necessary for faithful reproduction (such as fonts) while forbidding other elements (including forms, security, encryption, and tagged PDF). If you select PDF/A-1, the forbidden elements are greyed-out (not available).
- **Tagged PDF:** Exports special tags into the corresponding PDF tags. Some tags that are exported are table of contents, hyperlinks, and controls. This option can increase file sizes significantly.
- **Export bookmarks:** Exports headings in Writer documents, and page names in Impress and Draw documents, as “bookmarks” (a table of contents list displayed by some PDF readers, including Adobe Reader).
- **Export notes:** Exports notes in Writer and Calc documents as PDF notes. You may not want this!
- **Create PDF form - Submit format:** Choose the format of submitting forms from within the PDF file. This setting overrides the control’s URL property that you set in the document. There is only one common setting valid for the whole PDF document: PDF (sends the whole document), FDF (sends the control contents), HTML, and XML. Most often you will choose the PDF format.
- **Export automatically inserted blank pages:** If selected, automatically inserted blank pages are exported to the PDF. This is best if you are printing the PDF double-sided. For example, books usually have chapters set to always start on an odd-numbered (right-hand) page. When the previous chapter ends on

an odd page, OOo inserts a blank page between the two odd pages. This option controls whether to export that blank page.

Initial View page of PDF Options dialog

On the *Initial View* page, you can choose how the PDF opens by default in a PDF viewer. The selections should be self-explanatory.

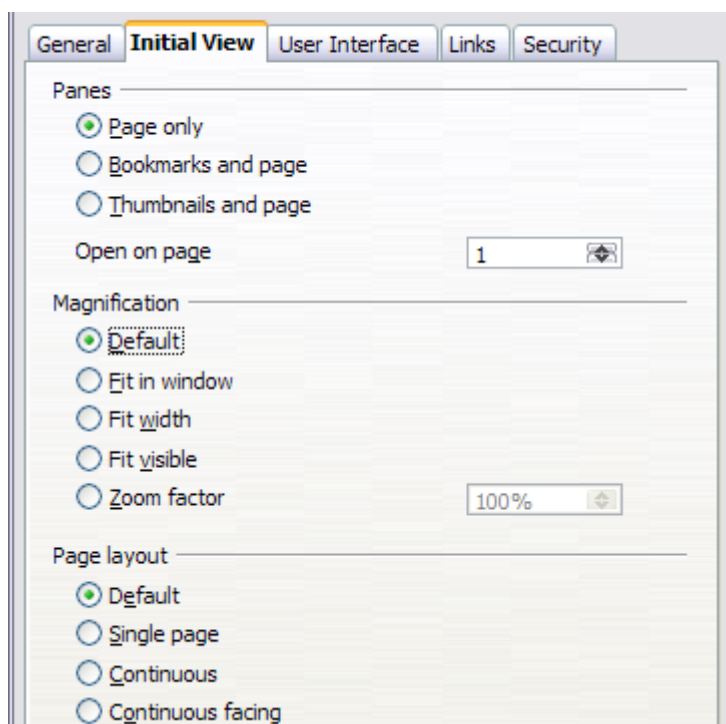


Figure 3: Initial View page of PDF Options dialog

User Interface page of PDF Options dialog

On the *User Interface* page, you can choose more settings to control how a PDF viewer displays the file. Some of these choices are particularly useful when you are creating a PDF to be used as a presentation or a kiosk-type display.

Window options section

- **Resize window to initial page.** Causes the PDF viewer window to resize to fit the first page of the PDF.
- **Center window on screen.** Causes the PDF viewer window to be centered on the computer screen.
- **Open in full screen mode.** Causes the PDF viewer to open full-screen instead of in a smaller window.
- **Display document title.** Causes the PDF viewer to display the document's title in the title bar.

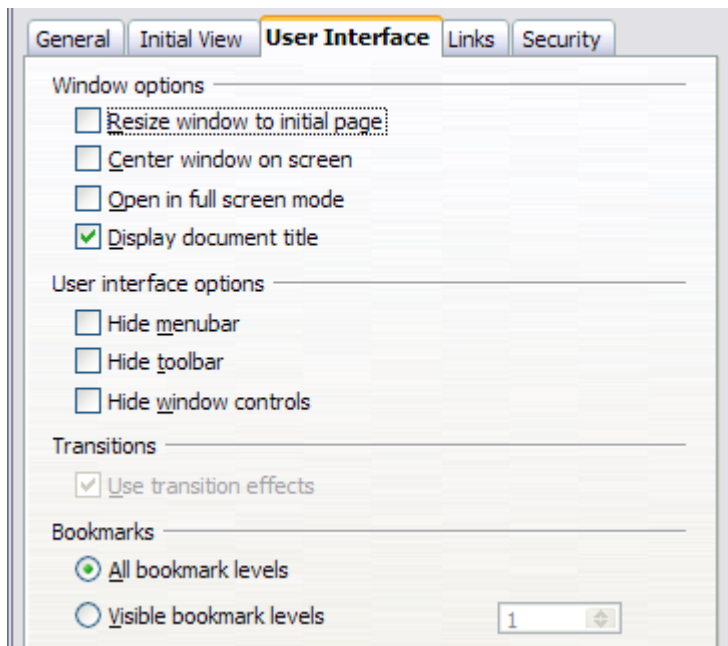


Figure 4: User Interface page of PDF Options dialog

User interface options section

- **Hide menubar.** Causes the PDF viewer to hide the menu bar.
- **Hide toolbar.** Causes the PDF viewer to hide the toolbar.
- **Hide window controls.** Causes the PDF viewer to hide other window controls.

Transitions

In Impress, displays slide transition effects as their respective PDF effects.

Bookmarks

Select how many heading levels are displayed as bookmarks, if *Export bookmarks* is selected on the General page.

Links page of PDF Options dialog

On this page you can choose how links are exported to PDF.

Export bookmarks as named destinations

If you have defined Writer bookmarks, Impress or Draw slide names, or Calc sheet names, this option exports them as “named destinations” to which Web pages and PDF documents can link.

Convert document references to PDF targets

If you have defined links to other documents with OpenDocument extensions (such as .ODT, .ODS, and .ODP), this option converts the files names to .PDF in the exported PDF document.

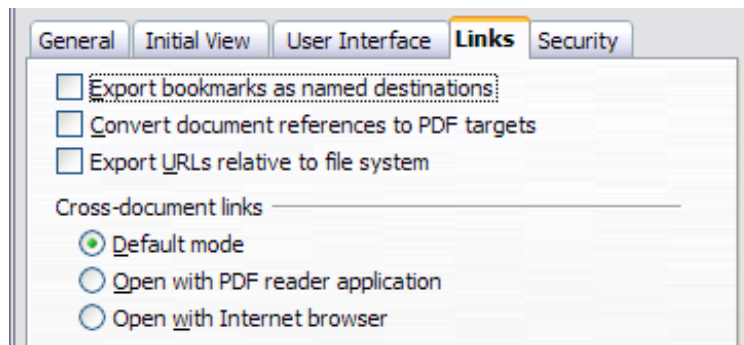


Figure 5: Links page of PDF Options dialog

Export URLs relative to file system

If you have defined relative links in a document, this option exports those links to the PDF.

Cross-document links

Defines the behavior of links clicked in PDF files.

Security page of PDF Options dialog

PDF export includes options to encrypt the PDF (so it cannot be opened without a password) and apply some digital rights management (DRM) features.

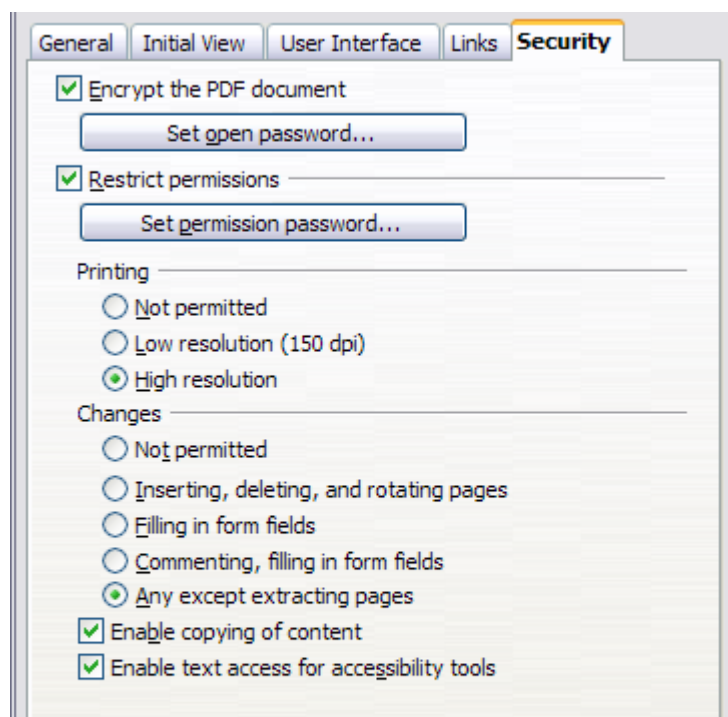


Figure 6: Security page of PDF Options dialog

- With an *open password* set, the PDF can only be opened with the password. Once opened, there are no restrictions on what the user can do with the document (for example, print, copy, or change it).
- With a *permissions password* set, the PDF can be opened by anyone, but its permissions can be restricted. See Figure 6.
- With *both* the *open password* and *permission password* set, the PDF can only be opened with the correct password, and its permissions can be restricted.

Note Permissions settings are effective only if the user’s PDF viewer respects the settings.

Figure 7 shows the pop-up dialog displayed when you click the **Set open password** button on the Security page of the PDF Options dialog.

After you set a password for permissions, the other choices on the Security page (shown in Figure 6) become available. These selections should be self-explanatory.



Figure 7: Setting a password to encrypt a PDF

Exporting to other formats

OOo uses the term “export” for some file operations involving a change of file type. If you cannot find what you want under **Save As**, look under **Export** as well.

OpenOffice.org can export files to XHTML.

In addition, OOO Writer can export to BibTeX (.bib), LaTeX 2e (.tex) and MediaWiki (.txt). OOO Draw and OOO Impress can export to Macromedia Flash (.swf).

To export to one of these formats, choose **File > Export**. On the Export dialog, specify a file name for the exported document, then select the required format in the *File format* list and click the **Export** button.

E-mailing documents

OOO provides several ways to quickly and easily send documents as an e-mail attachment in one of three formats: OpenDocument (OOO's default format), Microsoft Office formats, or PDF.

To send the current document in OpenDocument format:

- 1) Choose **File > Send > Document as E-mail**. OpenOffice.org opens the e-mail program specified in **Tools > Options > Internet > E-mail**. The document is attached.
- 2) In your e-mail program, enter the recipient, subject and any text you want to add, then send the e-mail.

File > Send > E-mail as OpenDocument Text (or Spreadsheet or Presentation) has the same effect.

If you choose **E-mail as Microsoft [Word, Excel, or Powerpoint]**, OOO first creates a file in one of those formats and then opens your e-mail program with the file attached.

Similarly, if you choose **E-mail as PDF**, OOO first creates a PDF using your default PDF settings (as when using the **Export Directly as PDF** toolbar button) and then opens your email program with the .PDF file attached.

E-mailing a document to several recipients

To e-mail a document to several recipients, you can use the features in your e-mail program or you can use OOO's mail merge facilities to extract email addresses from an address book.

You can use OOO's mail merge to send e-mail in two ways:

- Use the Mail Merge Wizard to create the document and send it. See Chapter 11 (Using Mail Merge) of the *Writer Guide* for details.
- Create the document in Writer without using the Wizard, then use the Wizard to send it. This method is described here.

To use the Mail Merge Wizard to send a previously-created Writer document:

- 1) Click **Tools > Mail Merge Wizard**. On the first page of the wizard (Figure 8), select **Use the current document** and click **Next**.

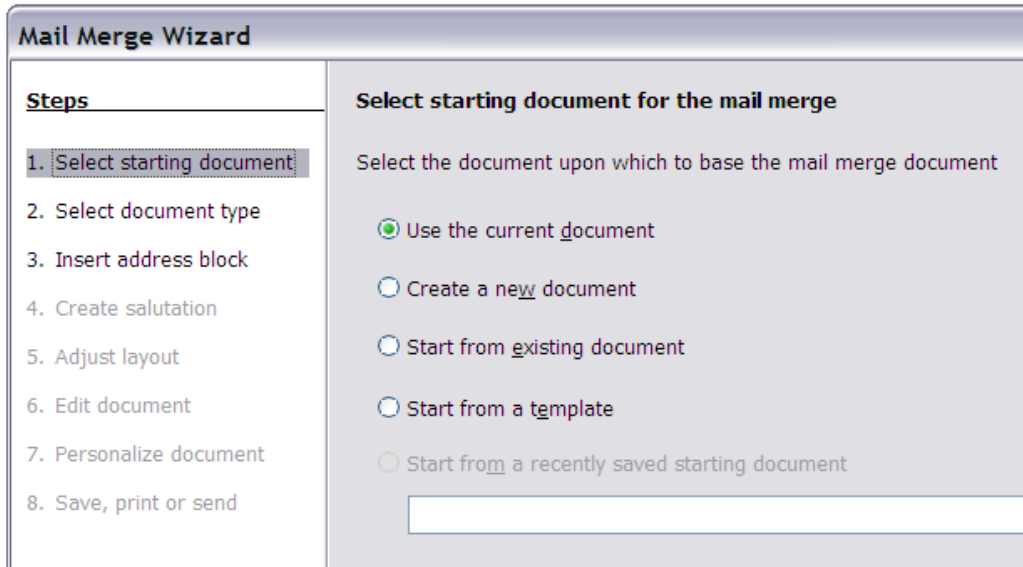


Figure 8: select starting document

- 2) On the second page (Figure 9), select **E-mail message** and click **Next**.

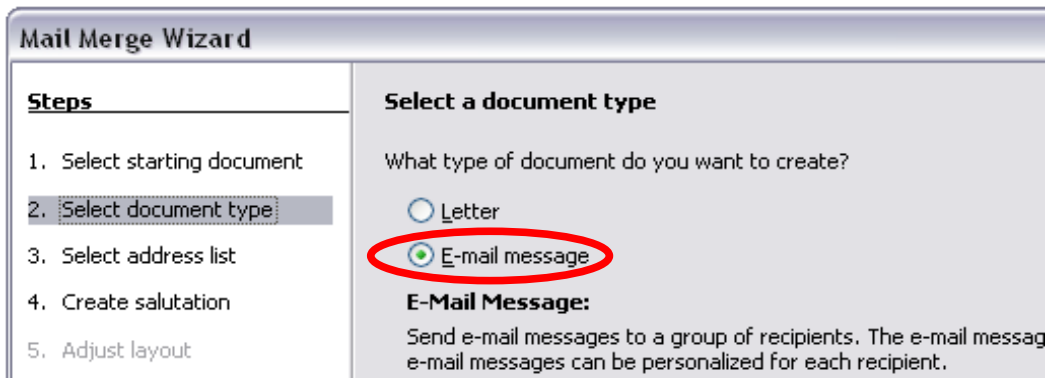


Figure 9: Select document type

- 3) On the third page (Figure 10), click the **Select Address List** button. Select the required address list (even if only one is shown) and then click **OK**. (If the address list you need is not shown here, you can click **Add** to find it and add it to the list.)
- 4) Back on the Select address list page, click **Next**. On the Create salutation page (Figure 11), deselect **This document should contain a salutation**.

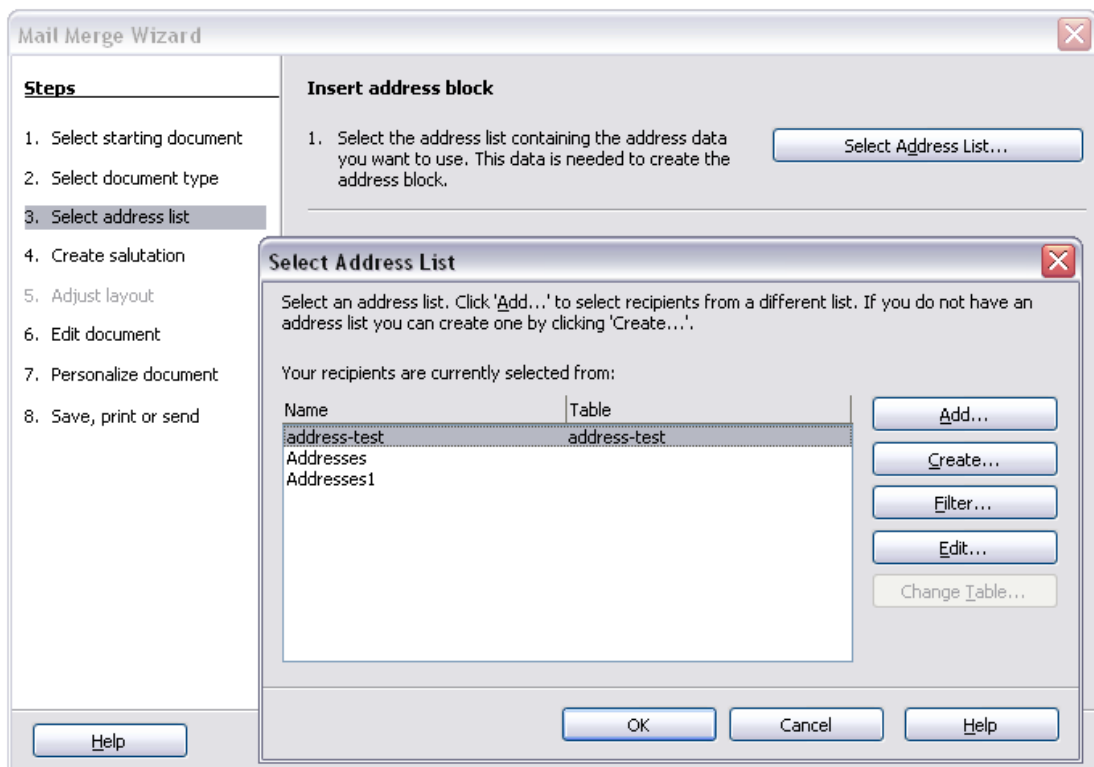


Figure 10: Selecting an address list

- 5) In the left-hand list, click **8. Save, print or send**. OOo displays a “Creating documents” message and then displays the *Save, print or send* page of the Wizard.
- 6) Select **Send merged document as E-Mail**. The lower part of the page changes to show e-mail settings choices (see Figure 12).
- 7) Type a subject for your email and click **Send documents**. OOo sends the e-mails.

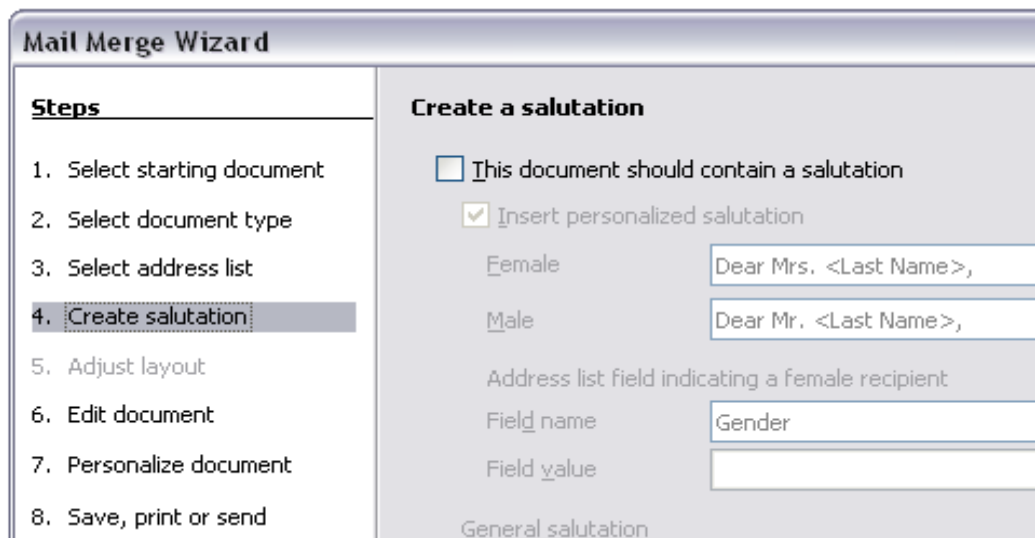


Figure 11: Deselecting a salutation

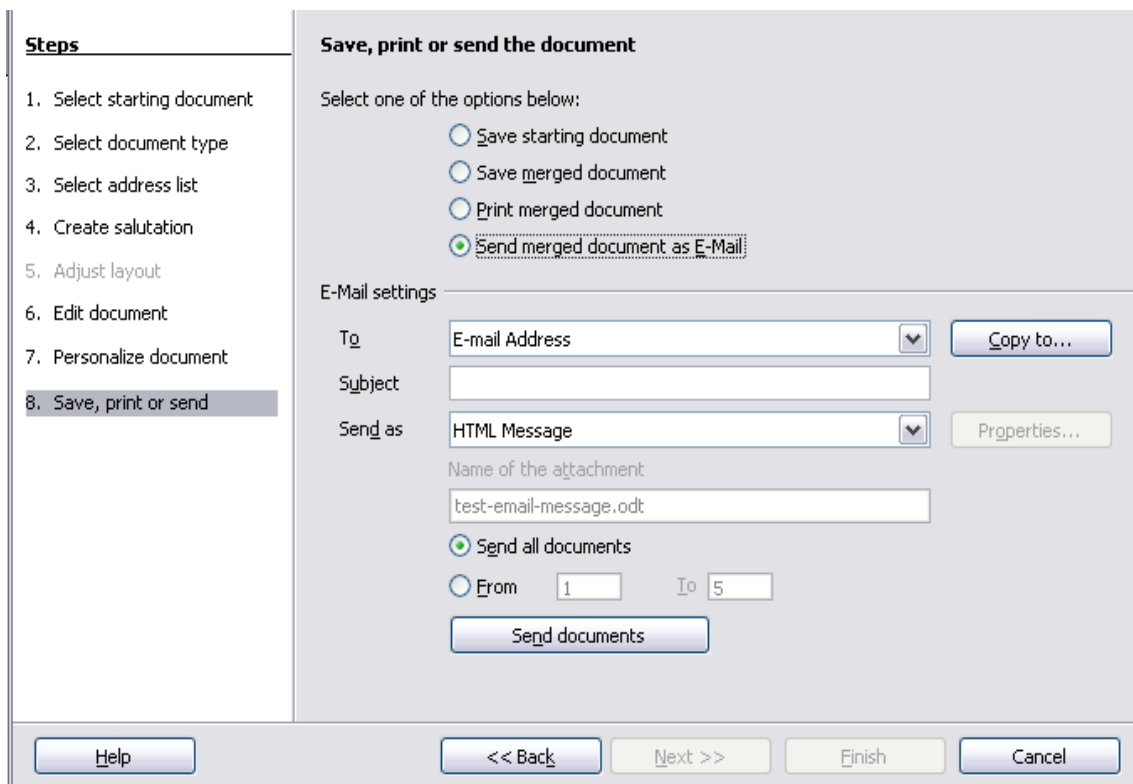


Figure 12: Sending a document as an email message

Digital signing of documents

To sign a document digitally, you need a personal key, the certificate. A personal key is stored on your computer as a combination of a private key, which must be kept secret, and a public key, which you add to your documents when you sign them. You can get a certificate from a certification authority, which may be a private company or a governmental institution.

When you apply a digital signature to a document, a kind of checksum is computed from the document's content plus your personal key. The checksum and your public key are stored together with the document.


When someone later opens the document on any computer with a recent version of OpenOffice.org, the program will compute the checksum again and compare it with the stored checksum. If both are the same, the program will signal that you see the original, unchanged document. In addition, the program can show you the public key information from the certificate. You can compare the public key with the public key that is published on the web site of the certificate authority.

Whenever someone changes something in the document, this change breaks the digital signature.

On Windows operating systems, the Windows features of validating a signature are used. On Solaris and Linux systems, files that are supplied by Thunderbird, Mozilla or Firefox are used. For a more detailed description of how to get and manage a certificate, and signature validation, see “Using Digital Signatures” in the OOo Help.

To sign a document:

- 1) Choose **File > Digital Signatures**.
- 2) If you have not saved the document since the last change, a message box appears. Click **Yes** to save the file.
- 3) After saving, you see the Digital Signatures dialog. Click **Add** to add a public key to the document.
- 4) In the Select Certificate dialog, select your certificate and click **OK**.
- 5) You see again the Digital Signatures dialog, where you can add more certificates if you want. Click **OK** to add the public key to the saved file.

A signed document shows an icon  in the status bar. You can double-click the icon to view the certificate.