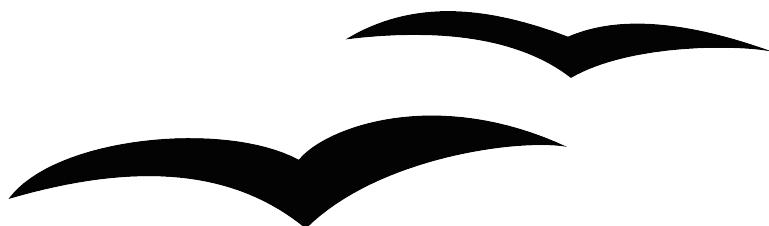


# *How To Setup Your System for Envelope Printing*

*Diagnostic Kit*



[HowTo printing envelopes diagnostics.]

[0.8]

First edition: [2006-01-13]

First English edition: [2006-01-13]



# Contents

---

<a href="#">Contents</a> .....	i
<a href="#">Overview</a> .....	ii
<a href="#">Copyright and trademark information</a> .....	ii
<a href="#">Feedback</a> .....	ii
<a href="#">Acknowledgments</a> .....	ii
<a href="#">Modifications and updates</a> .....	ii
<a href="#">Printing Envelopes Diagnostics for OpenOffice.Org -</a> .....	1
<a href="#">Prerequisites:</a> .....	1
<a href="#">Step #1:</a> .....	1
<a href="#">Step #2:</a> .....	1
<a href="#">Step #3:</a> .....	2
<a href="#">Step #4:</a> .....	3
<a href="#">Step #5:</a> .....	4
<a href="#">Public Documentation License, Version 1.0</a> .....	5

## Overview

---

Many people have difficulty printing envelopes from OpenOffice.org. This document is an attempt to make the process easier to determine envelope orientation and printer setup. For those who expect that setting up OpenOffice.org alone is sufficient will find that the process is actually two stages which can be confusing. This difference is covered by [Issue Number 55499](#) and you are encouraged to vote for its resolution.

## Copyright and trademark information

The contents of this Documentation are subject to the Public Documentation License, Version 1.0 (the "License"); you may only use this Documentation if you comply with the terms of this License. A copy of the License is available at:

<http://www.openoffice.org/licenses/PDL.rtf>

The Original Documentation is HowTo printing envelopes diagnostics. The Initial Writer(s) of the Original Documentation is/are maxweber © 2006. All Rights Reserved. (Initial Writer contact(s): [maxweber@openoffice.org](mailto:maxweber@openoffice.org).)

Contributor(s): grsingleton.

Portions created by grsingleton are Copyright (C)\_2006. All Rights Reserved. (Contributor contact(s): [grsingleton@openoffice.org](mailto:grsingleton@openoffice.org)).

All trademarks within this guide belong to legitimate owners.

*[Note: a copy of the PDL is included in this template and is also available at:  
<http://www.openoffice.org/licenses/PDL.rtf>.]*

## Feedback

Please direct any comments or suggestions about this document to:  
[maxweber@openoffice.org](mailto:maxweber@openoffice.org)

## Acknowledgments

## Modifications and updates

Version	Date	Description of Change
[0.1]	[2006-01-13]	[mw: Initial edition issued for comment]
[0.8]	[2006-01-16]	[grs: convert to standard format and additional graphics]

## Printing Envelopes Diagnostics for OpenOffice.Org -

---

### Prerequisites:

- OpenOffice.Org 2.0 or later (always use the **latest stable** version)
- The [Envelope Diagnostic Kit](#) containing this document in PDF and the two diagnostic documents.
- Product specifications of your printer hardware
- 1 sheet of paper media you normally use ("Letter" for countries using imperial paper sizes or "A4" for countries using metric paper sizes)

### Step #1:

**Question:** Does your printer support the desired envelope media size by default (check with the product specifications of your printer)?

Yes	No
No problems with printing envelopes should arise, you can quit this sheet.	Please proceed with step #2.

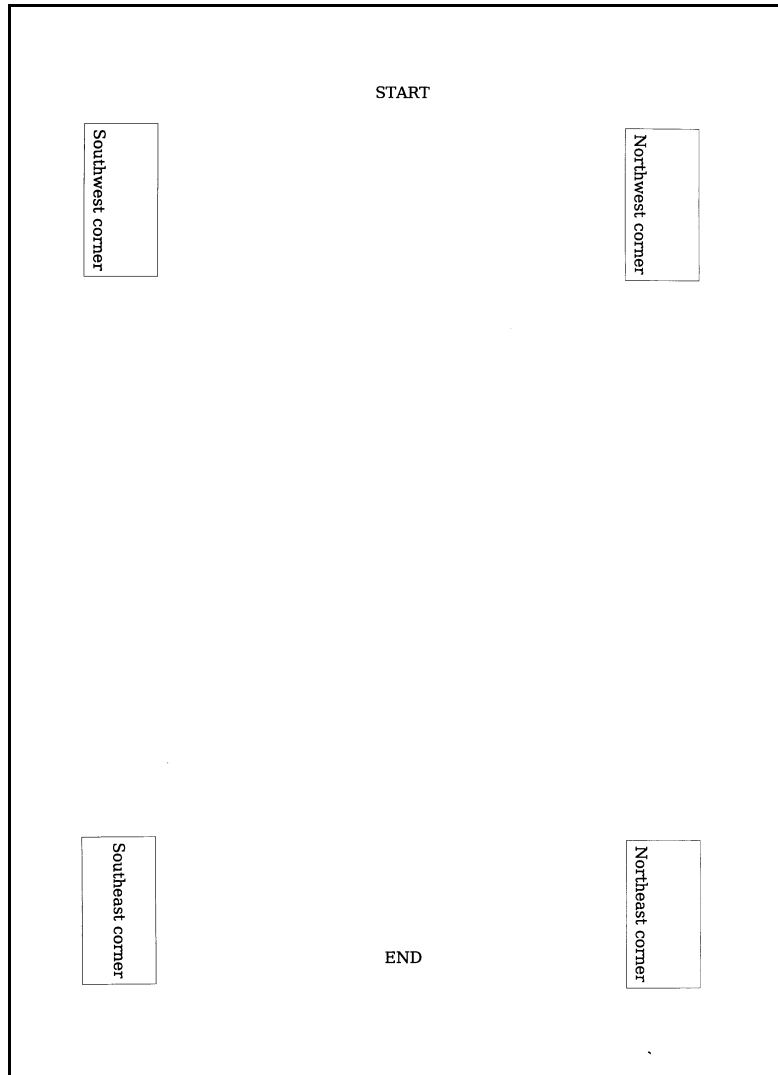
### Step #2:

**Task:** Open `printing-template.odt` and ensure that the page style matches the paper size you use. For example, if your paper tray holds A4, please change the page-settings of to reflect the media size of `_your_` sheets using **Format > Page**.  
Next print the document.

### Step #3:

**Task:** Refill the printout into the paper tray so that on the next run printing will be done on that sheet-side that is already printed.

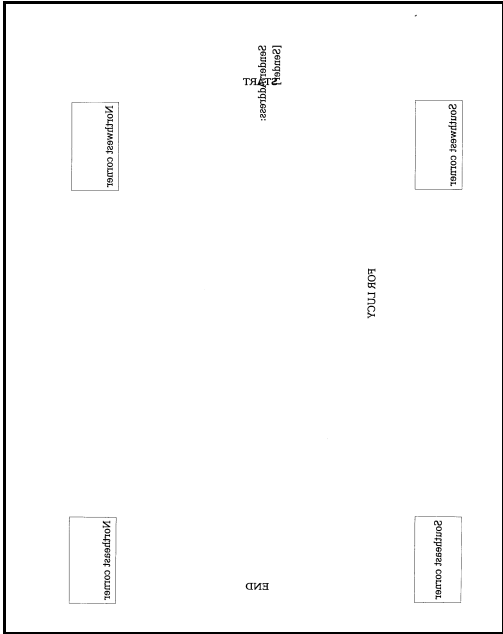
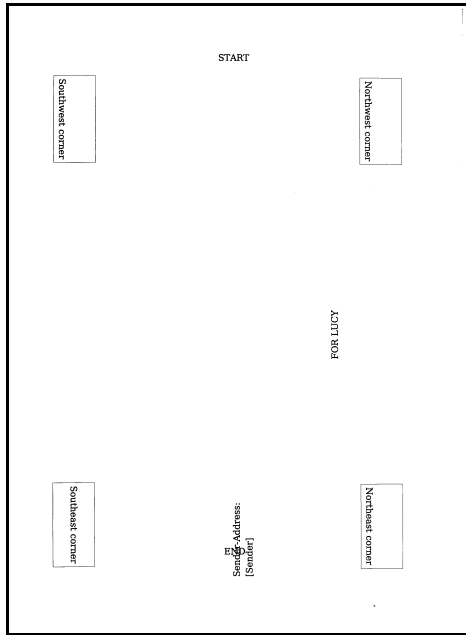
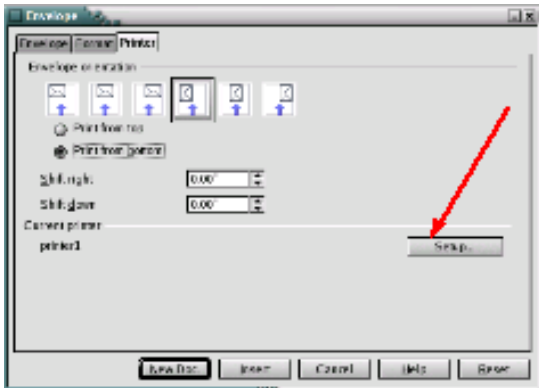
**Note:** Please ensure that the sheets will feed in the same direction as they are printed. In most cases this will be with the **Start** heading as shown below.



## Step #4:

**Task:** Open test-envelope.odt from the [Envelope Diagnostic Kit](#) and print it.

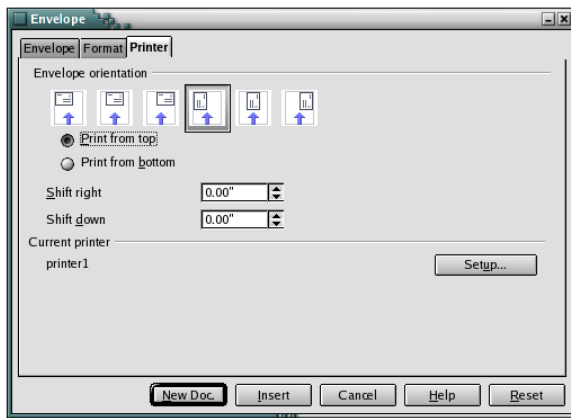
**Question:** Where is the sender address located on the printout?

<p>Near the header line („START“)</p> <p>If your output looks like the graphic below you will have should no problems with printing envelopes. You can quit this sheet.</p> 	<p>Near the bottom line („END“).</p> <p>As shown in the following graphic.</p>  <p>To correct for this, change your printer setup to print "upside down" or "rotated by 180°", which is the same. (Why? ^)</p> <p>For accessing the printer setup use the button as indicated on this graphic.</p> 
--	--

## Step #5:

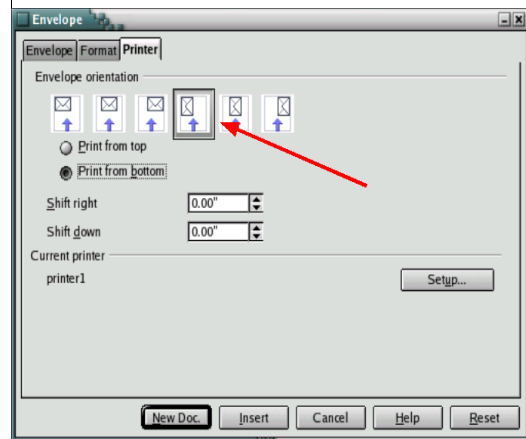
### Sender Address near Start

**Task:** Create and print your envelopes by using the OpenOffice.Org envelope wizard via Insert > Envelope. Feed the envelopes as indicated on the graphic in manner suitable for your printer.

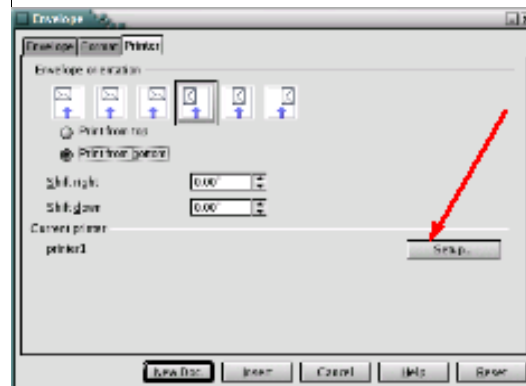


### Sender Address near End

If in Step 4 your test printout printed near the End label, you can correct for this by changing your printer setup to print "upside down" or you can rotate your envelope by 180°. This is effectively the same action.



Do not forget that you specify the envelope type in the printer setup by using the Setup button as indicated on this graphic. Remember to select orientation, the printer tray and the envelope type.





# Public Documentation License, Version 1.0

---

## 1.0 DEFINITIONS.

- 1.1. "Commercial Use" means distribution or otherwise making the Documentation available to a third party.
- 1.2. "Contributor" means a person or entity who creates or contributes to the creation of Modifications.
- 1.3. "Documentation" means the Original Documentation or Modifications or the combination of the Original Documentation and Modifications, in each case including portions thereof.
- 1.4. "Electronic Distribution Mechanism" means a mechanism generally accepted for the electronic transfer of data.
- 1.5. "Initial Writer" means the individual or entity identified as the Initial Writer in the notice required by the Appendix.
- 1.6. "Larger Work" means a work which combines Documentation or portions thereof with documentation or other writings not governed by the terms of this License.
- 1.7. "License" means this document.
- 1.8. "Modifications" means any addition to or deletion from the substance or structure of either the Original Documentation or any previous Modifications, such as a translation, abridgment, condensation, or any other form in which the Original Documentation or previous Modifications may be recast, transformed or adapted. A work consisting of editorial revisions, annotations, elaborations, and other modifications which, as a whole represent an original work of authorship, is a Modification. For example, when Documentation is released as a series of documents, a Modification is:
- A. Any addition to or deletion from the contents of the Original Documentation or previous Modifications.
  - B. Any new documentation that contains any part of the Original Documentation or previous Modifications.
- 1.9. "Original Documentation" means documentation described as Original Documentation in the notice required by the Appendix, and which, at the time of its release under this License is not already Documentation governed by this License.
- 1.10. "Editable Form" means the preferred form of the Documentation for making Modifications to it. The Documentation can be in an electronic, compressed or archival form, provided the appropriate decompression or de-archiving software is widely available for no charge.
- 1.11. "You" (or "Your") means an individual or a legal entity exercising rights under, and complying with all of the terms of this License or a future version of this License issued under Section 5.0 ("Versions of the License"). For legal entities, "You" includes any entity which controls, is controlled by, or is under common control with You. For purposes of this definition, "control" means (a) the power, direct or indirect, to cause the direction or management of such entity, whether by contract or otherwise, or (b) ownership of more than fifty

percent (50%) of the outstanding shares or beneficial ownership of such entity.

## 2.0 LICENSE GRANTS.

### 2.1 Initial Writer Grant.

The Initial Writer hereby grants You a world-wide, royalty-free, non-exclusive license to use, reproduce, prepare Modifications of, compile, publicly perform, publicly display, demonstrate, market, disclose and distribute the Documentation in any form, on any media or via any Electronic Distribution Mechanism or other method now known or later discovered, and to sublicense the foregoing rights to third parties through multiple tiers of sublicensees in accordance with the terms of this License.

The license rights granted in this Section 2.1 ("Initial Writer Grant") are effective on the date Initial Writer first distributes Original Documentation under the terms of this License.

### 2.2. Contributor Grant.

Each Contributor hereby grants You a world-wide, royalty-free, non-exclusive license to use, reproduce, prepare Modifications of, compile, publicly perform, publicly display, demonstrate, market, disclose and distribute the Documentation in any form, on any media or via any Electronic Distribution Mechanism or other method now known or later discovered, and to sublicense the foregoing rights to third parties through multiple tiers of sublicensees in accordance with the terms of this License.

The license rights granted in this Section 2.2 ("Contributor Grant") are effective on the date Contributor first makes Commercial Use of the Documentation.

## 3.0 DISTRIBUTION OBLIGATIONS.

### 3.1. Application of License.

The Modifications which You create or to which You contribute are governed by the terms of this License, including without limitation Section 2.2 ("Contributor Grant"). The Documentation may be distributed only under the terms of this License or a future version of this License released in accordance with Section 5.0 ("Versions of the License"), and You must include a copy of this License with every copy of the Documentation You distribute. You may not offer or impose any terms that alter or restrict the applicable version of this License or the recipients' rights hereunder. However, You may include an additional document offering the additional rights described in Section 3.5 ("Required Notices").

### 3.2. Availability of Documentation.

Any Modification which You create or to which You contribute must be made available publicly in Editable Form under the terms of this License via a fixed medium or an accepted Electronic Distribution Mechanism.

### 3.3. Description of Modifications.

All Documentation to which You contribute must identify the

changes You made to create that Documentation and the date of any change. You must include a prominent statement that the Modification is derived, directly or indirectly, from Original Documentation provided by the Initial Writer and include the name of the Initial Writer in the Documentation or via an electronic link that describes the origin or ownership of the Documentation. The foregoing change documentation may be created by using an electronic program that automatically tracks changes to the Documentation, and such changes must be available publicly for at least five years following release of the changed Documentation.

### 3.4. Intellectual Property Matters.

Contributor represents that Contributor believes that Contributor's Modifications are Contributor's original creation(s) and/or Contributor has sufficient rights to grant the rights conveyed by this License.

### 3.5. Required Notices.

You must duplicate the notice in the Appendix in each file of the Documentation. If it is not possible to put such notice in a particular Documentation file due to its structure, then You must include such notice in a location (such as a relevant directory) where a reader would be likely to look for such a notice, for example, via a hyperlink in each file of the Documentation that takes the reader to a page that describes the origin and ownership of the Documentation. If You created one or more Modification(s) You may add your name as a Contributor to the notice described in the Appendix.

You must also duplicate this License in any Documentation file (or with a hyperlink in each file of the Documentation) where You describe recipients' rights or ownership rights.

You may choose to offer, and to charge a fee for, warranty, support, indemnity or liability obligations to one or more recipients of Documentation. However, You may do so only on Your own behalf, and not on behalf of the Initial Writer or any Contributor. You must make it absolutely clear than any such warranty, support, indemnity or liability obligation is offered by You alone, and You hereby agree to indemnify the Initial Writer and every Contributor for any liability incurred by the Initial Writer or such Contributor as a result of warranty, support, indemnity or liability terms You offer.

### 3.6. Larger Works.

You may create a Larger Work by combining Documentation with other documents not governed by the terms of this License and distribute the Larger Work as a single product. In such a case, You must make sure the requirements of this License are fulfilled for the Documentation.

## 4.0 APPLICATION OF THIS LICENSE.

This License applies to Documentation to which the Initial Writer has attached this License and the notice in the Appendix.

## 5.0 VERSIONS OF THE LICENSE.

### 5.1. New Versions.

Initial Writer may publish revised and/or new versions of the License from time to time. Each version will be given a distinguishing version number.

### 5.2. Effect of New Versions.

Once Documentation has been published under a particular version of the License, You may always continue to use it under the terms of that version. You may also choose to use such Documentation under the terms of any subsequent version of the License published by \_\_\_\_\_ [Insert name of the foundation, company, Initial Writer, or whoever may modify this License]. No one other than \_\_\_\_\_ [Insert name of the foundation, company, Initial Writer, or whoever may modify this License] has the right to modify the terms of this License. Filling in the name of the Initial Writer, Original Documentation or Contributor in the notice described in the Appendix shall not be deemed to be Modifications of this License.

## 6.0 DISCLAIMER OF WARRANTY.

DOCUMENTATION IS PROVIDED UNDER THIS LICENSE ON AN "AS IS" BASIS, WITHOUT WARRANTY OF ANY KIND, EITHER EXPRESSED OR IMPLIED, INCLUDING, WITHOUT LIMITATION, WARRANTIES THAT THE DOCUMENTATION IS FREE OF DEFECTS, MERCHANTABLE, FIT FOR A PARTICULAR PURPOSE OR NON-INFRINGEMENT. THE ENTIRE RISK AS TO THE QUALITY, ACCURACY, AND PERFORMANCE OF THE DOCUMENTATION IS WITH YOU. SHOULD ANY DOCUMENTATION PROVE DEFECTIVE IN ANY RESPECT, YOU (NOT THE INITIAL WRITER OR ANY OTHER CONTRIBUTOR) ASSUME THE COST OF ANY NECESSARY SERVICING, REPAIR OR CORRECTION. THIS DISCLAIMER OF WARRANTY CONSTITUTES AN ESSENTIAL PART OF THIS LICENSE. NO USE OF ANY DOCUMENTATION IS AUTHORIZED HEREUNDER EXCEPT UNDER THIS DISCLAIMER.

## 7.0 TERMINATION.

This License and the rights granted hereunder will terminate automatically if You fail to comply with terms herein and fail to cure such breach within 30 days of becoming aware of the breach. All sublicenses to the Documentation which are properly granted shall survive any termination of this License. Provisions which, by their nature, must remain in effect beyond the termination of this License shall survive.

## 8.0 LIMITATION OF LIABILITY.

UNDER NO CIRCUMSTANCES AND UNDER NO LEGAL THEORY, WHETHER IN TORT (INCLUDING NEGLIGENCE), CONTRACT, OR OTHERWISE, SHALL THE INITIAL WRITER, ANY OTHER CONTRIBUTOR, OR ANY DISTRIBUTOR OF DOCUMENTATION, OR ANY SUPPLIER OF ANY OF SUCH PARTIES, BE LIABLE TO ANY PERSON FOR ANY DIRECT, INDIRECT, SPECIAL, INCIDENTAL, OR CONSEQUENTIAL DAMAGES OF ANY CHARACTER INCLUDING, WITHOUT LIMITATION, DAMAGES FOR LOSS OF GOODWILL, WORK STOPPAGE, COMPUTER FAILURE OR MALFUNCTION, OR ANY AND ALL OTHER DAMAGES OR LOSSES ARISING OUT OF OR RELATING TO THE USE OF THE DOCUMENTATION, EVEN IF SUCH PARTY SHALL HAVE BEEN INFORMED OF THE POSSIBILITY OF SUCH DAMAGES.

## Public Documentation License, Version 1.0

### 9.0 U.S. GOVERNMENT END USERS.

If Documentation is being acquired by or on behalf of the U.S. Government or by a U.S. Government prime contractor or subcontractor (at any tier), then the Government's rights in Documentation will be only as set forth in this Agreement; this is in accordance with 48 CFR 227.7201 through 227.7202-4 (for Department of Defense (DOD) acquisitions) and with 48 CFR 2.101 and 12.212 (for non-DOD acquisitions).

### 10.0 MISCELLANEOUS.

This License represents the complete agreement concerning the subject matter hereof. If any provision of this License is held to be unenforceable, such provision shall be reformed only to the extent necessary to make it enforceable. This License shall be governed by California law, excluding its conflict-of-law provisions. With respect to disputes or any litigation relating to this License, the losing party is responsible for costs, including without limitation, court costs and reasonable attorneys' fees and expenses. The application of the United Nations Convention on Contracts for the International Sale of Goods is expressly excluded. Any law or regulation which provides that the language of a contract shall be construed against the drafter shall not apply to this License.

### Appendix

### Public Documentation License Notice

The contents of this Documentation are subject to the Public Documentation License Version 1.0 (the "License"); you may only use this Documentation if you comply with the terms of this License. A copy of the License is available at <http://www.openoffice.org/licenses/PDL.rtf>.

The Original Documentation is \_\_\_\_\_. The Initial Writer of the Original Documentation is \_\_\_\_\_ (C) \_\_\_\_\_. All Rights Reserved. (Initial Writer contact(s): \_\_\_\_\_ [Insert hyperlink/alias].)

Contributor(s): \_\_\_\_\_.

Portions created by \_\_\_\_\_ are Copyright (C) \_\_\_\_\_ [Insert year(s)]. All Rights Reserved. (Contributor contact(s): \_\_\_\_\_ [Insert hyperlink/alias]).

**Note:** The text of this Appendix may differ slightly from the text of the notices in the files of the Original Documentation. You should use the text of this Appendix rather than the text found in the Original Documentation for Your Modifications.

- 1 By doing tasks #2 to #4 and answering the question of task #4 with „Near the bottom line („END“““ you found out: If your printer receives a document in landscape mode it will start the printout on the „END“ of the page. Consequently if you would feed your envelope on the southwest corner (as the OpenOffice.Org envelope wizard expects it), your printer will start printing your envelope with the address-field on the northeast corner. That however wont work. The solution is to move the output 180° clockwise.

Please email [maxweber@openoffice.org](mailto:maxweber@openoffice.org) if this documentation was helpful in solving your printing problems or not. A short message will perfectly do: Subject: PED; Message: +1 or -1 (+1 = worked for me, -1 did not work for me).