

Apache Lenya Screenshots

Table of contents

1 Site management.....	2
2 WYSIWYG editing.....	4

The following screenshots are meant for the evaluator in a hurry. For a much more complete impression, [download](http://www.apache.org/dyn/closer.cgi/lenya) (http://www.apache.org/dyn/closer.cgi/lenya) the latest release and try it out yourself. You may also want to try out the [online demo](http://lenya.zones.apache.org:9999/) (http://lenya.zones.apache.org:9999/).

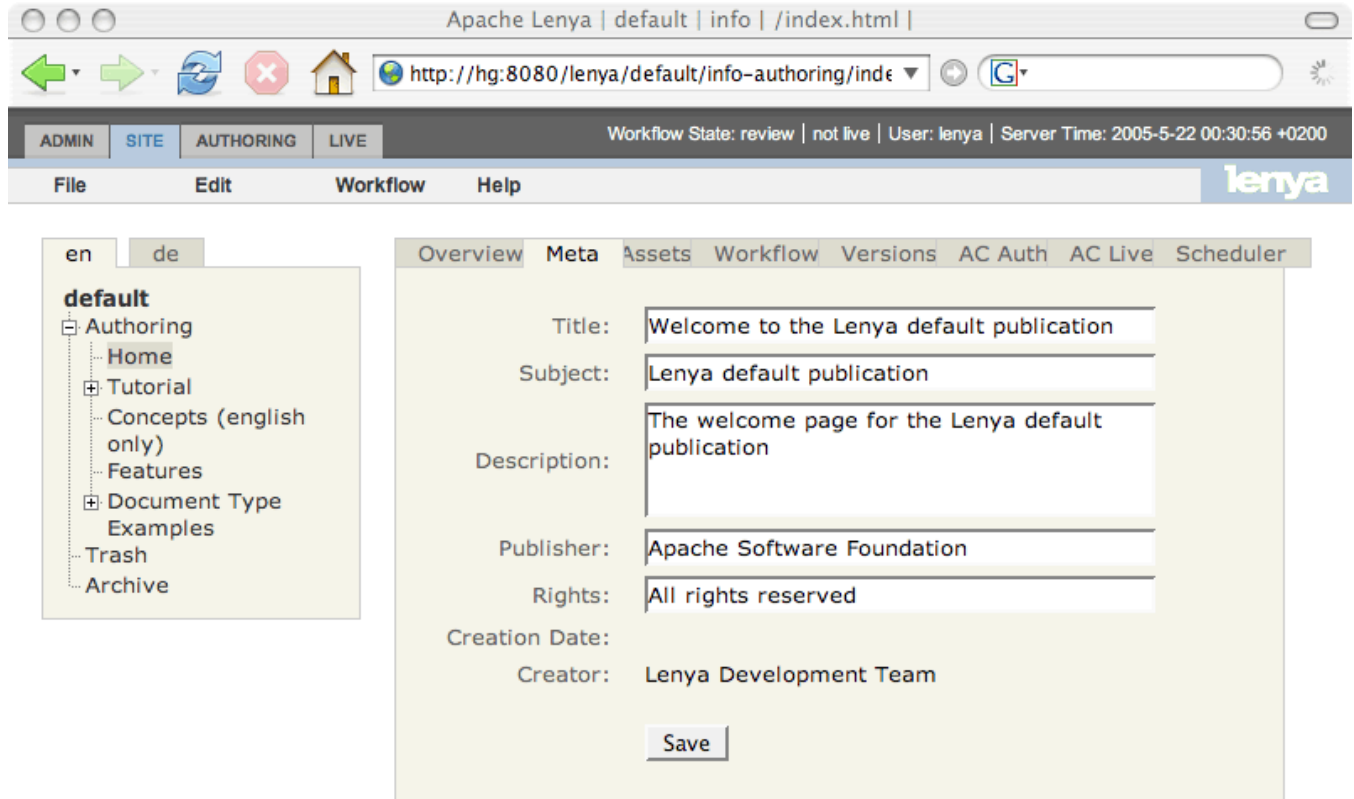
1 Site management

The Apache Lenya site area is used to perform operations that concern multiple pages, like moving pages around, renaming sections of the site, etc. The site area gives a quick overview of the complete site. Detailed information about each page can be accessed by clicking on the relevant node in the tree structure at left. In this view, the asset management is shown.

The screenshot shows the Apache Lenya web interface. At the top, there is a browser window with the URL `http://hg:8080/lenya/default/info-authoring/tuto`. Below the browser, there is a navigation bar with tabs for ADMIN, SITE, AUTHORIZING, and LIVE. The current page is in the 'AUTHORIZING' state. The main content area is divided into several tabs: Overview, Meta, Assets, Workflow, Versions, AC Auth, AC Live, and Scheduler. The 'Assets' tab is selected, showing a table of assets. The table has columns for Assets, Preview, Title, File Size, and Creation Date. One asset is listed: 'fantomas_interpol.jpg' with a preview image, title 'Fantomas', file size '15 kB', and creation date '22.05.2005'. There is a 'Delete' button next to the asset. A 'New Asset' button is also visible at the bottom of the table.

Assets	Preview	Title	File Size	Creation Date	
fantomas_interpol.jpg		Fantomas	15 kB	22.05.2005	Delete

This is the metadata tab of the site area.



This is the workflow tab of the site area.

The screenshot shows the Apache Lenya web interface. The browser address bar displays `http://hg:8080/lenya/default/info-authoring/index.html`. The interface includes a navigation menu with 'ADMIN', 'SITE', 'AUTHORING', and 'LIVE' tabs. The 'AUTHORING' tab is active, and the 'Workflow' sub-tab is selected. The main content area shows the 'Variables' and 'History' sections.

Navigation Menu: ADMIN | SITE | **AUTHORING** | LIVE

Workflow State: review | not live | User: lenya | Server Time: 2005-5-22 00:29:40 +0200

Menu: File | Edit | Workflow | Help

Language: en | de

default

- [-] Authoring
 - Home
 - [-] Tutorial
 - Concepts (english only)
 - Features
 - [-] Document Type
 - Examples
 - Trash
 - Archive

Workflow Overview: Overview | Meta | Assets | **Workflow** | Versions | AC Auth | AC Live | Scheduler

Variables

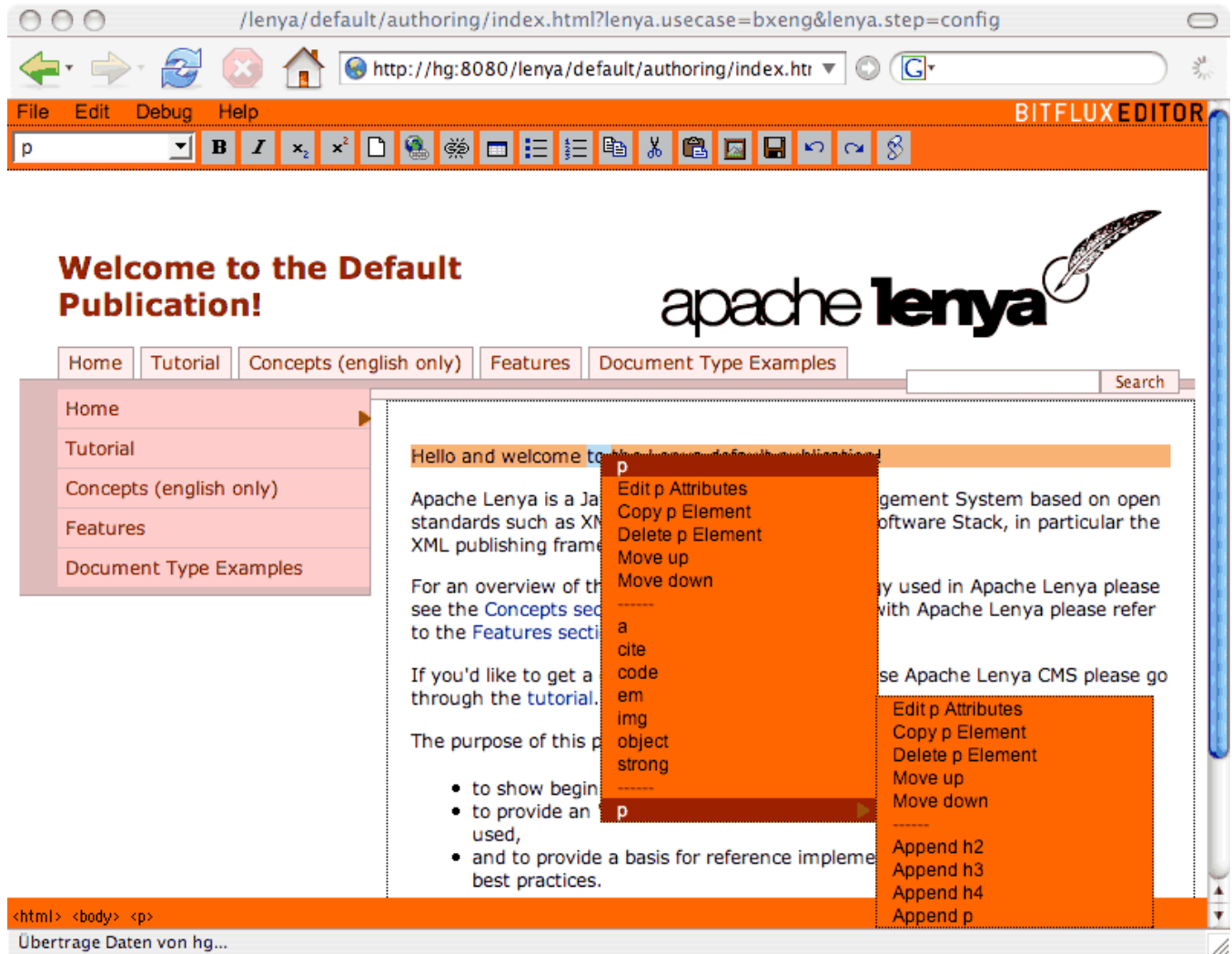
Name	Value
is_live	false

History

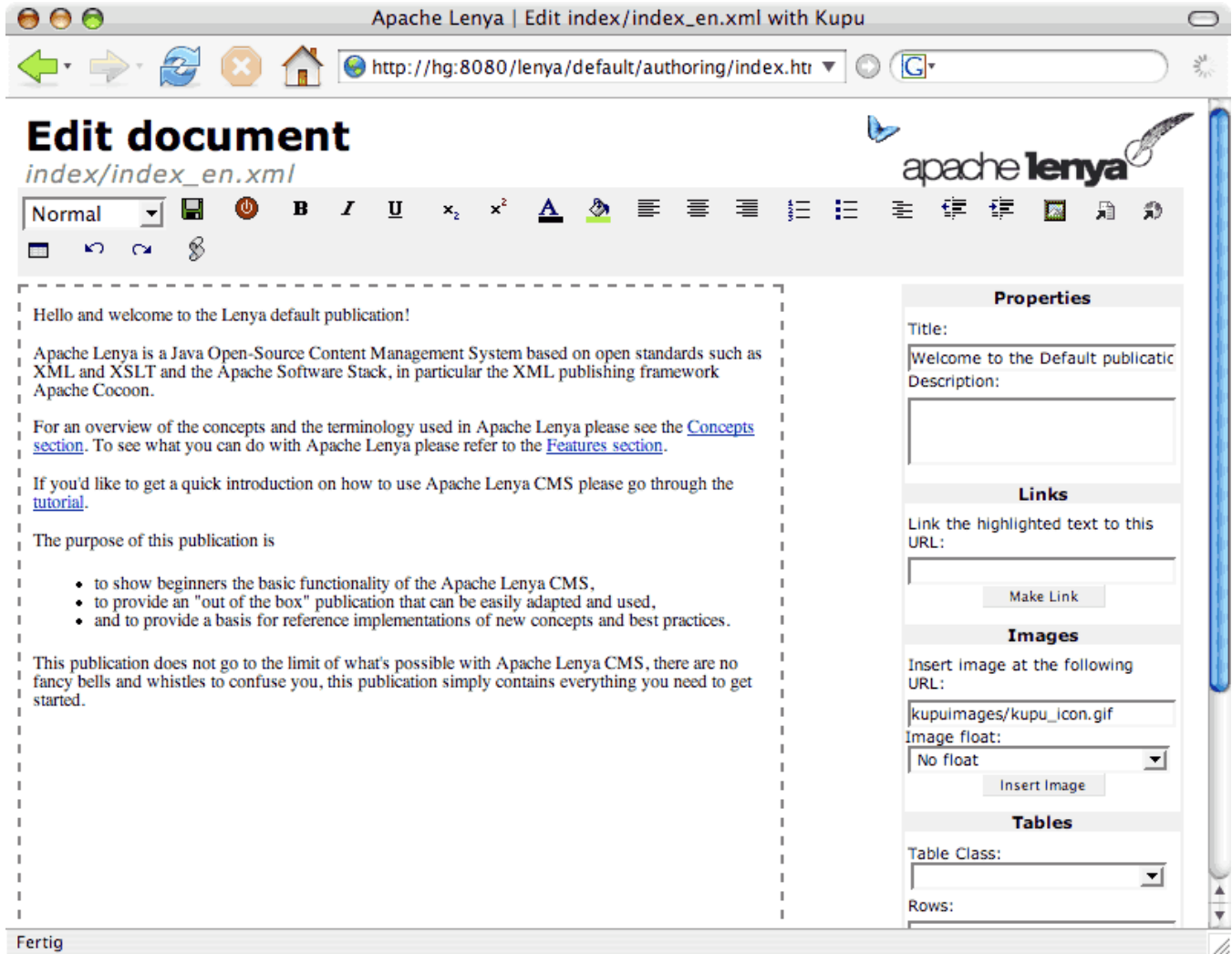
Date	Event	State	User	IP Address
2003-10-23 15:03:10		authoring	lenya	127.0.0.1
2005-05-22 00:29:37	submit	review	lenya	192.168.6.13

2 WYSIWYG editing

Apache Lenya comes with different editors for content editing. One of the more advanced ones is [BXE](http://bxo.oscom.org) (<http://bxo.oscom.org>). Using BXE, you can edit arbitrary XML in WYSIWYG and validate your document against an Relax NG schema while it is being edited. BXE uses validation to restrict the editing choices instead of allowing free-form input and then generating validation errors on save (an approach that makes it different from most other editors).



Another editor shipping with Apache Lenya is [Kupu](http://kupu.oscom.org) (<http://kupu.oscom.org>) . Kupu is specialized for XHTML editing and works in Internet Explorer and Mozilla.



Both editors are tightly integrated, and can of course access assets and links managed by Apache Lenya, as the following insert link popup shows.

Insert Link



en de

default

- [-] Authoring
 - Home
 - [-] Tutorial
 - Create new doctype
 - Concepts (english only)
 - Features
 - [-] Document Type Examples
 - XHTML Doctype

You can either click on a node in the tree for an internal link or enter a link in the URL field.

URL:

Title:

Link text:

