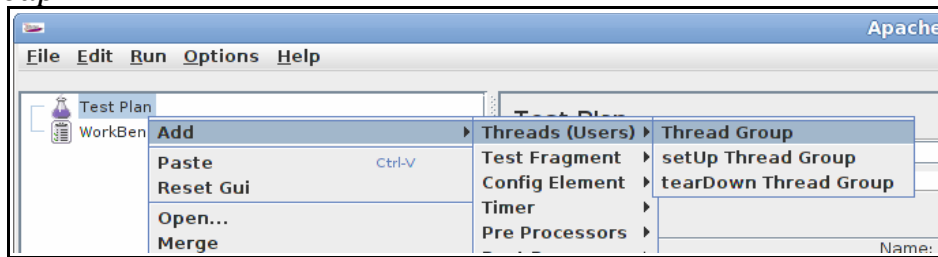


# JMeter proxy Step-by-step

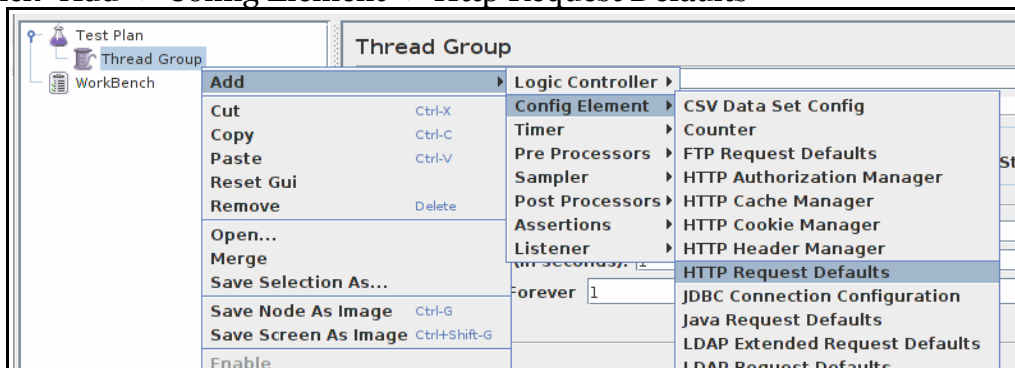
This tutorial attempts to explain the exact steps for JMeter's proxy. For those new to JMeter, one easy way to create a test plan is to use the Proxy. What the proxy does is it records the requests sent to the server.

## Basic Proxy Instructions

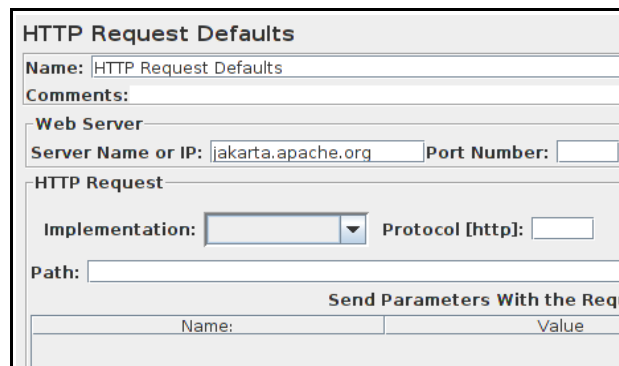
1. Go to `JMETER_HOME/bin` and start JMeter with `jmeterw.cmd` on Windows and `jmeter` on Linux/Unix
2. Select “Test Plan” on the tree
3. Right click on the “Test Plan” and add a new thread group: *Add > Threads (Users) > Thread Group*



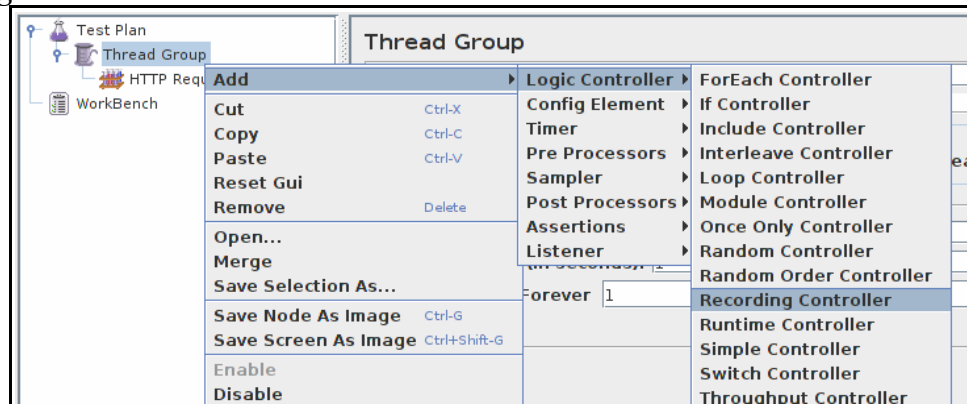
4. Select the Thread Group
5. Right click “Add -> Config Element -> Http Request Defaults”



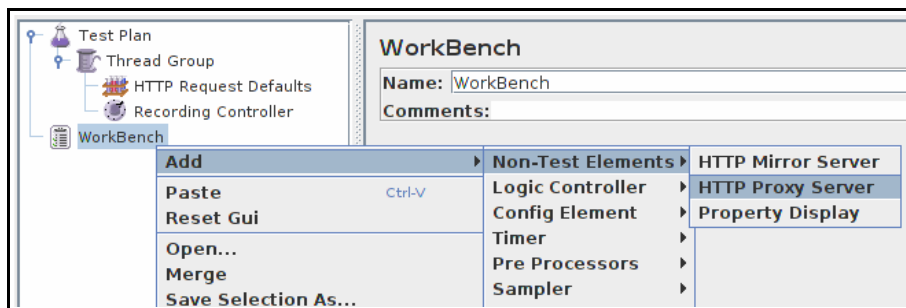
6. In new HTTP Request Defaults element: Server name – enter “jakarta.apache.org”
7. Path – leave blank



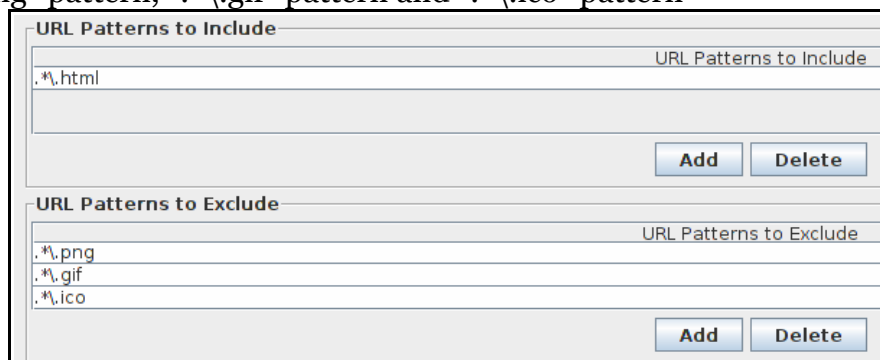
- Right click on the “Thread Group” and add a recording controller: Add > Logic Controller > Recording Controller



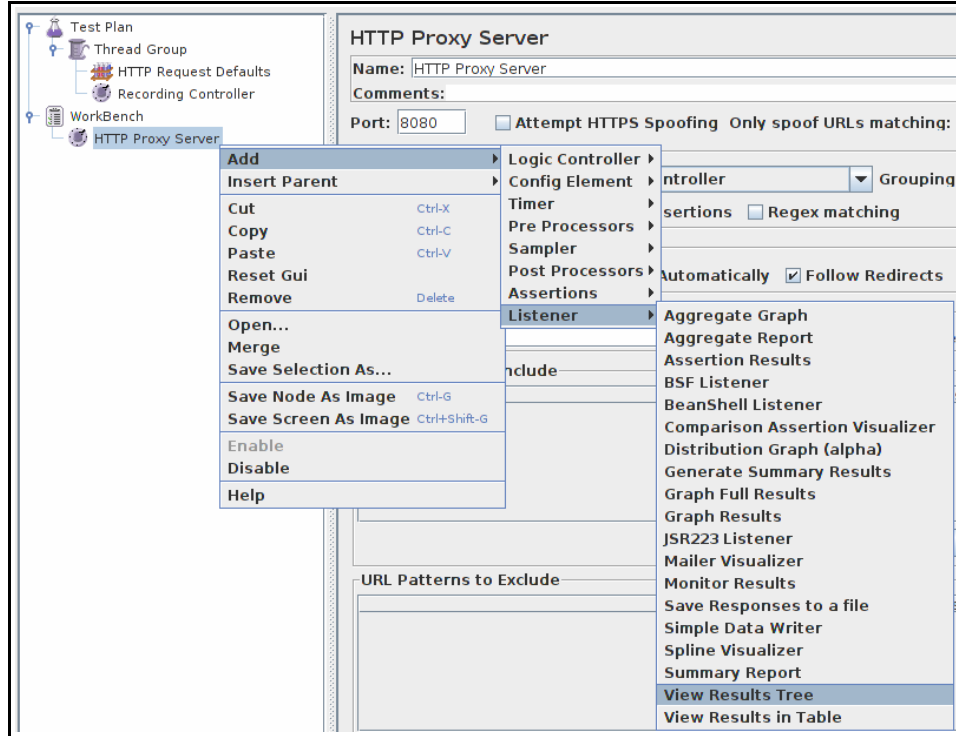
- Next, select WorkBench
- Right click on WorkBench and add the Http proxy: Add -> Non-test elements -> Http Proxy Server



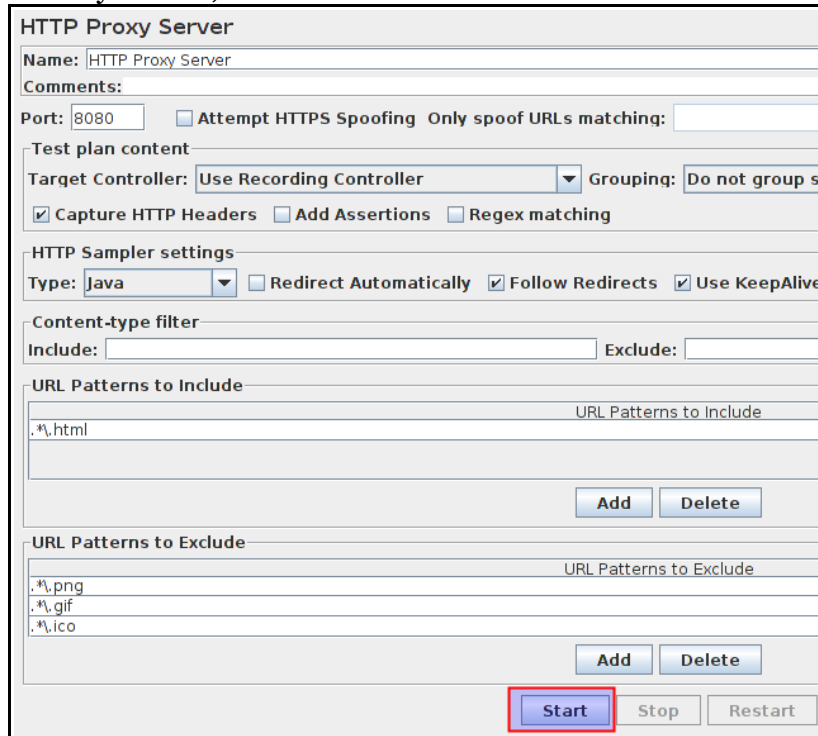
- On HTTP Proxy Server, click the “Add” button in “URL Patterns to Include”. This will create a blank entry.
- Enter “.\*\.html”
- Click 3 times, the “Add” button in “URL Patterns to Exclude”. This will create 3 blank entries.
- Enter “.\*\.png” pattern, “.\*\.gif” pattern and “.\*\.ico” pattern



15. Right click on "HTTP Proxy Server" and add a listener: Add -> Listener -> View Results Tree



16. Return to HTTP Proxy Server, and click the "Start" button at the bottom



## Configure your browser to use the JMeter HTTP Proxy

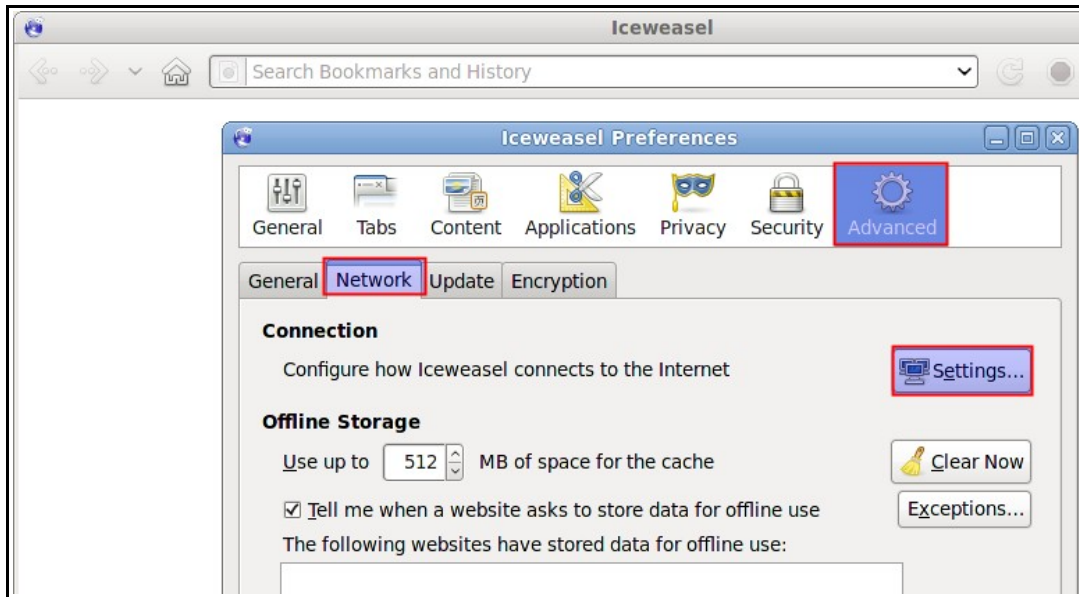
At this point, JMeter's proxy is running. For this exercise, we will use Iceweasel/Firefox to view some pages on Jakarta.

13. Start Iceweasel/Firefox, but do not close Jmeter.

14. From the tool bar, click “Edit -> Preferences” (or “Tools > Preferences”). This should bring up the options.

15. Select the “Advanced” tab, and “Network” tab

16. Click “Settings” button near the bottom.

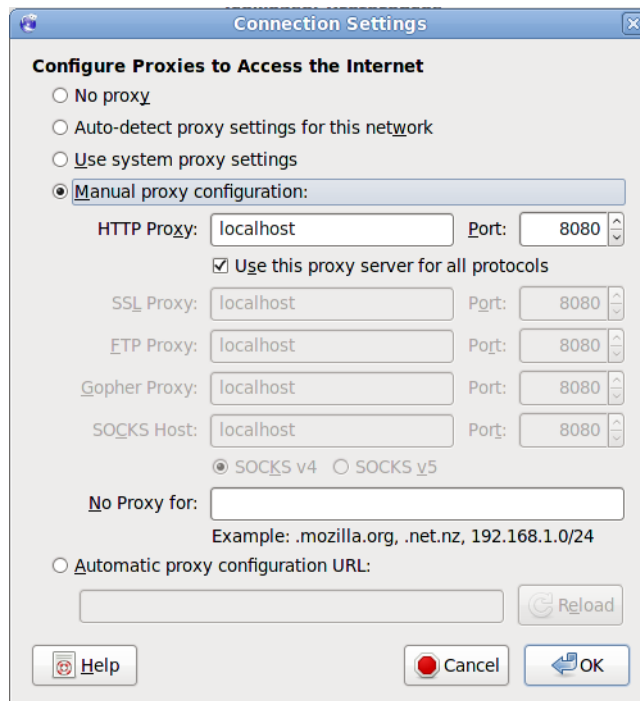


17. On the new popup, check “Manual proxy configuration”. The address and port fields should be enabled now.

18. Address – enter “localhost” or the IP address of your system

19. Port – enter “8080”.

20. Check “Use this proxy server for all protocols”



21. Click “ok” button

22. Click “ok” button again. This should return you to the browser

## Record your navigation

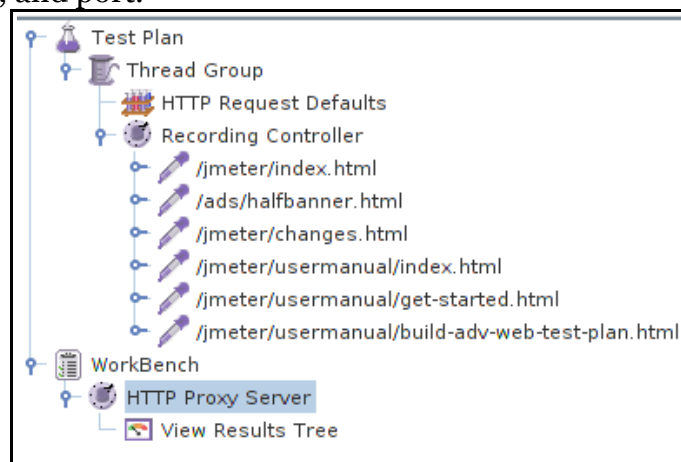
23. With your browser, in the “Address” bar at the top, enter

“<http://jakarta.apache.org/jmeter/index.html>” and hit the “enter” key.

24. Click on a few links on JMeter's pages.

25. Close your browser and bring up the JMeter window.

Expand the thread group and there should be several samplers. At this point, the test plan can be saved as is. If you forget to add default http request settings, you will have to manually delete the servername, and port.

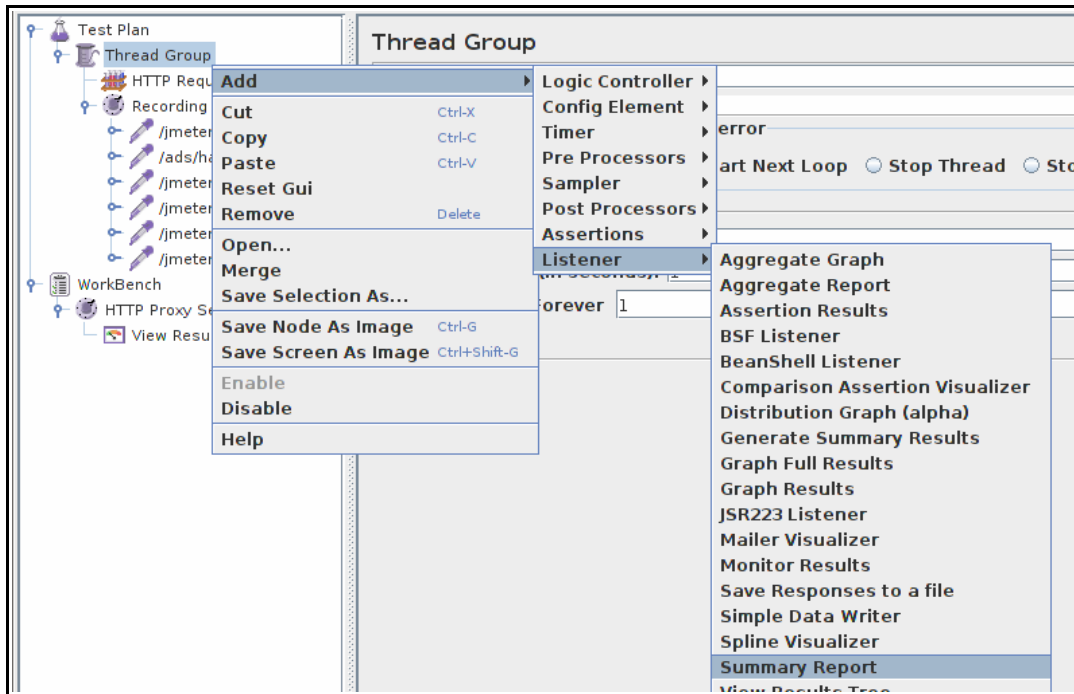


In this sample, there aren't any default request parameters. If a particular request parameter

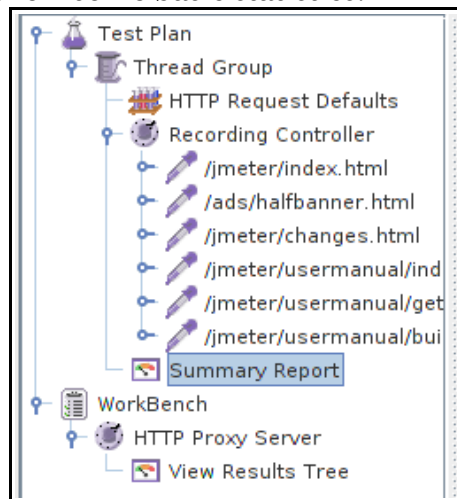
is required by all pages, the request defaults is where one would add the entries.

25. Select “Thread Group”

26. Right click “Add -> Listener -> Summary Report” to add an summary listener.



27. The summary listener will show some basic statistics.



27. Select “Thread Group”

28. Number of Threads – enter “5”

29. Ramp up Period – do not change

30. Loop Count – enter 100

**Thread Group**

Name: Thread Group

Comments:

Action to be taken after a Sampler error

Continue  Start Next Loop  Stop

Thread Properties

Number of Threads (users): 5

Ramp-Up Period (in seconds): 1

Loop Count:  Forever 100

Scheduler

## Start the test

At this point, we are ready to run our test plan and see what happens. Save the test plan. When you're ready to run the test, there's two ways:

1. Run -> Start
2. Ctrl-R

Before you start the test, select "Summary Report". As the test runs, the statistics will change until the test is done. At the end of the test, the summary report should look like this.

**Summary Report**

Name: Summary Report

Comments:

Write results to file / Read from file

Filename   Log/Display Only:  Errors  Successes

Label	# Samples	Average	Min	Max	Std. Dev.	Error %	Throughput	KB/sec	Avg. Bytes
/jmeter/ind...	500	260	236	1071	66.47	0.00%	3.1/sec	10.90	3635.9
/ads/halfba...	500	252	231	761	50.06	0.00%	3.1/sec	2.03	677.0
/jmeter/cha...	500	277	242	1408	102.13	0.00%	3.1/sec	20.06	6675.0
/jmeter/use...	500	267	239	1017	95.51	0.00%	3.1/sec	14.58	4851.9
/jmeter/use...	500	285	249	1519	105.40	0.00%	3.1/sec	31.11	10351.9
/jmeter/use...	500	266	238	1106	94.11	0.00%	3.1/sec	10.45	3469.9
TOTAL	3000	268	231	1519	88.61	0.00%	18.3/sec	88.22	4943.6

While the test is running, in the upper right-hand corner, there should be a green square. When the test is done, the box should be grey.

