



Getting Started Guide

Chapter 6
Getting Started with
Impress

Presentations in OpenOffice.org

Copyright

This document is Copyright © 2005–2008 by its contributors as listed in the section titled **Authors**. You may distribute it and/or modify it under the terms of either the [GNU General Public License](#), version 3 or later, or the [Creative Commons Attribution License](#), version 3.0 or later.

All trademarks within this guide belong to their legitimate owners.

Authors

Agnes Belzunce
Dan Lewis
Peter Hillier-Brook
Stefan A. Keel
Gary Schnabl
Barbara M. Tobias
Jean Hollis Weber
Linda Worthington
Michele Zarri

Feedback

Please direct any comments or suggestions about this document to:
authors@user-faq.openoffice.org

Publication date and software version

Published 13 October 2008. Based on OpenOffice.org 3.0.



*You can download
an editable version of this document from
<http://oooauthors.org/en/authors/userguide3/published/>*

Contents

Copyright.....	2
What is Impress?.....	5
Parts of the main Impress window.....	5
Slides pane.....	5
Tasks pane.....	7
Workspace.....	7
Toolbars.....	8
Navigator.....	8
Working with views.....	9
Normal view.....	9
Outline view.....	9
Notes view.....	11
Slide Sorter view.....	12
Handout view.....	14
Creating a new presentation.....	14
Planning a presentation.....	14
Using the Presentation Wizard.....	15
Formatting a presentation.....	19
Creating the first slide.....	19
Inserting additional slides.....	20
Modifying the appearance of slides.....	22
Modifying the slide show.....	22
Slide masters and styles.....	23
Working with slide masters.....	24
Creating slide masters.....	25
Applying a slide master.....	25
Loading additional slide masters.....	25
Modifying a slide master.....	26
Adding text to all slides.....	27
Adding and formatting text.....	28

Using text boxes created from the Layout pane.....	28
Using text boxes created from the text box tool.....	28
Pasting text.....	29
Pasting unformatted text.....	30
Formatting pasted text.....	30
Creating bulleted and numbered lists.....	31
Creating lists in AutoLayout text boxes.....	31
Creating lists in other text boxes.....	31
Creating a new outline level.....	32
Changing the appearance of the list.....	32
Creating tables.....	33
Adding graphics, spreadsheets, charts, and other objects.....	34
Setting up the slide show.....	35
Running the slide show.....	36

What is Impress?

Impress is OpenOffice.org's slide show (presentations) program. You can create slides that contain many different elements, including text, bulleted and numbered lists, tables, charts, clip art, and a wide range of graphic objects. Impress also includes a spelling checker, a thesaurus, prepackaged text styles, and attractive background styles.

This chapter includes instructions, screenshots, and hints to guide you through the Impress environment while designing the easier presentations. Although more difficult designs are mentioned throughout this chapter, explanations for creating them are in the *Impress Guide*. If you have a working knowledge of how to create slide shows, we recommend you use the *Impress Guide* for your source of information.

To use Impress for more than very simple slide shows requires some knowledge of the elements which the slides contain. Slides containing text use styles to determine the appearance of that text. Slides containing objects are created the same way that drawings are created in Draw. For this reason, we recommend that you also study Chapter 3 (Working with Templates and Styles) and Chapter 7 (Getting Started with Draw).

Parts of the main Impress window

The main Impress window (Figure 1) has three parts: the *Slides pane*, *Workspace*, and *Tasks pane*. Additionally, several toolbars can be displayed or hidden during the creation of a presentation.

Tip

You can remove the *Slides pane* or *Tasks pane* from view by clicking the *X* in the upper right corner. You can also show or hide these panes using **View > Slide Pane** or **View > Tasks Pane**.

Slides pane

The *Slides pane* contains thumbnail pictures of the slides in your presentation, in the order they will be shown (unless you change the order). Clicking a slide selects it and places it in the *Workspace*. While it is there, you can apply any changes desired to that particular slide.

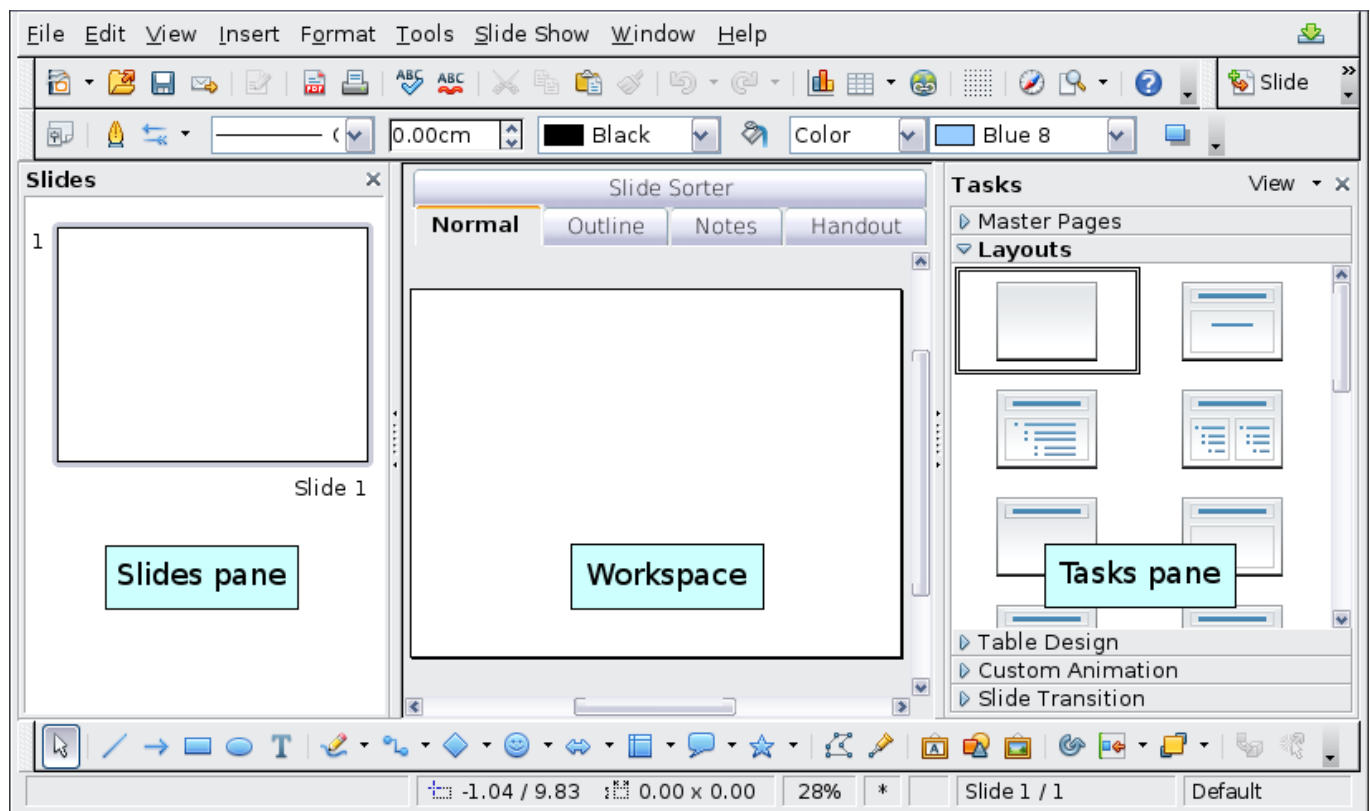


Figure 1: Main window of Impress

Several additional operations can be performed on one or more slides in the Slides pane:

- Add new slides at any place within the presentation after the first slide.
- Mark a slide as hidden so that it will not be shown as part of the slide show.
- Delete a slide from the presentation if it is no longer needed.
- Rename a slide.
- Copy or move the contents of one slide to another (copy and paste, or cut and paste, respectively).

It is also possible to perform the following operations, although there are more efficient methods than using the Slides pane:

- Change the slide transition following the selected slide or after each slide in a group of slides.
- Change the sequence of slides in the presentation.
- Change the slide design. (A window opens allowing you to load your own design.)
- Change slide layout for a group of slides simultaneously. (This requires using the *Layouts* section of the Tasks pane.)

Tasks pane

The Tasks pane has five sections.

Master Pages

Here you define the page style for your presentation. Impress contains 28 prepackaged Master Pages (slide masters). One of them—Default—is blank, and the rest have a background.

Tip

Press *F11* to open the Styles and Formatting window, where you can modify the styles used in any slide master to suit your purpose. This can be done at any time.

Layout

Twenty prepackaged layouts are shown. You can choose the one you want, use it as it is or modify it to your own requirements. At present it is not possible to create custom layouts.

Table Design

Eleven standard table styles are provided in this pane. You can further modify the appearance of a table with the selections to show or hide specific rows and columns, or to apply a banded appearance to the rows and columns.

Custom Animation

A variety of animations for selected elements of a slide are listed. Animation can be added to a slide, and it can also be changed or removed later.

Slide Transition

Fifty-six transitions are available, including *No Transition*. You can select the transition speed (slow, medium, fast). You can also choose between an automatic or manual transition, and how long you want the selected slide to be shown (automatic transition only).

Workspace

The *Workspace* has five tabs: **Normal**, **Outline**, **Notes**, **Handout**, and **Slide Sorter**. These five tabs are called **View buttons**. There are also many toolbars that can be used during slide creation; they are revealed by selecting them with **View > Toolbars**. The *Workspace* is below the View buttons. This is where you assemble the various parts of your selected slide.

Each view is designed to make completing certain tasks easier. In summary:

- *Normal view* is the main view for creating individual slides. Use this view to format and design slides and to add text, graphics, and animation effects.
- *Outline view* shows topic titles, bulleted lists, and numbered lists for each slide in outline format. Use this view to rearrange the order of slides, edit titles and headings, rearrange the order of items in a list, and add new slides.
- *Notes view* lets you add notes to each slide that are not seen when the presentation is shown.
- *Slide Sorter view* shows a thumbnail of each slide in order. Use this view to rearrange the order of slides, produce a timed slide show, or add transitions between selected slides.
- *Handout view* lets you print your slides for a handout. You can choose one, two, three, four, or six slides per page from **Tasks pane > Layouts**. Thumbnails can be re-arranged in this view by dragging and dropping them.


Toolbars

The various Impress toolbars can be displayed or hidden by clicking **View > Toolbars** and selecting from the menu. You can also select the icons that you wish to appear on each toolbar. For more information, refer to Chapter 1 (Introducing OpenOffice.org).

Many of the toolbars in Impress are similar to the toolbars in OOo Draw. Refer to the *Draw Guide* for details on the functions available and how to use them.

Navigator

The Navigator (Figure 2) displays all objects contained in a document. It provides another convenient way to move around a document and

find items in it. The Navigator icon  is located on the Standard toolbar. You can also display the Navigator by choosing **Edit > Navigator** on the menu bar or pressing *Ctrl+Shift+F5*.

The Navigator is more useful if you give your slides and objects (pictures, spreadsheets, and so on) meaningful names, instead of leaving them as the default “Slide 1” and “Picture 1” shown in Figure 2.

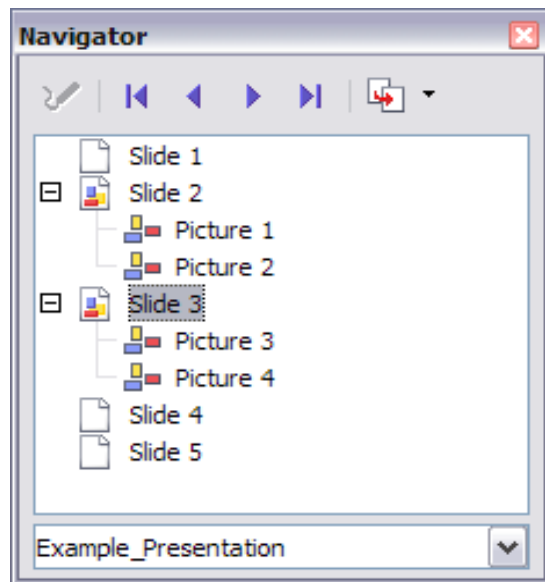


Figure 2: Navigator

Working with views

This section describes the use of the five views.

Normal view

Normal view is the main view for working with individual slides. Use this view to format and design and to add text, graphics, and animation effects.

To place a slide in the Slide Design area of the Normal view, click the slide thumbnail in the Slides pane or use the Navigator.

To select a slide in the Navigator, scroll down the list until you find it and then double-click it.

Outline view

Outline view (Figure 3) contains all the slides of the presentation in their numbered sequence. It shows topic titles, bulleted lists, and numbered lists for each slide in outline format. Only the text contained in the default text boxes in each slide is shown, so if your slide includes other text boxes or drawing objects, the text in these objects is not displayed. Slide names are also not included.

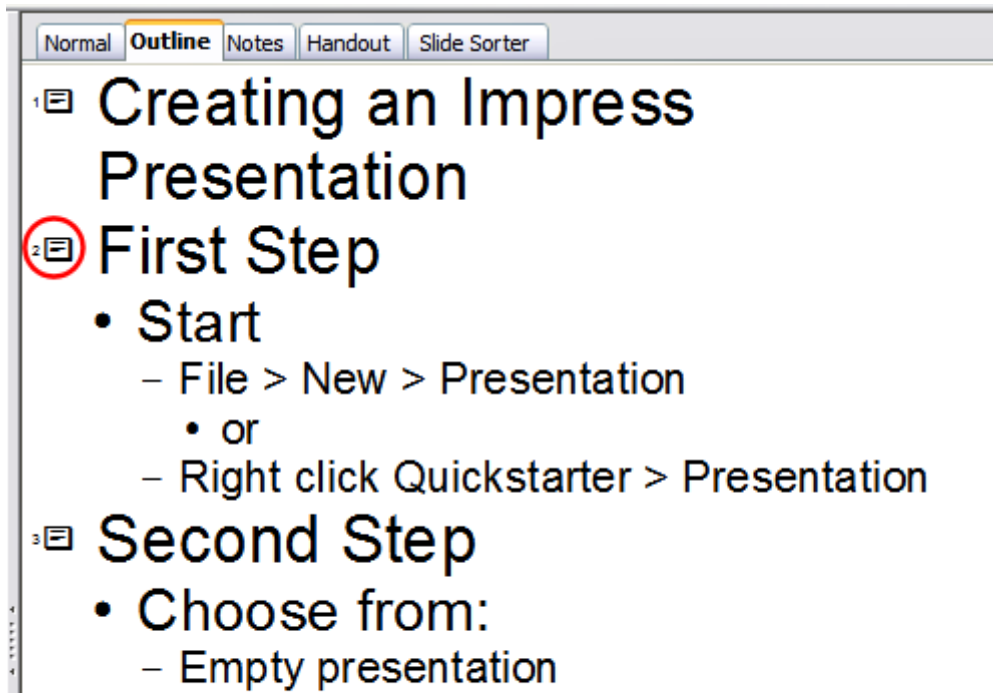


Figure 3: Outline view

Outline view serves at least two purposes.

1) Making changes in the text of a slide:

- You can add and delete the text in a slide just as you would in the Normal view.
- You can move the paragraphs of text in the selected slide up or down by using the up and down arrow buttons (Move Up or Move Down) on the Text Formatting toolbar.
- You can change the Outline Level for any of the paragraphs in a slide using the left and right arrow buttons (Promote or Demote).
- You can both move a paragraph and change its outline level using a combination of these four arrow buttons.

2) Comparing the slides with your outline (if you have prepared one in advance). If you notice from your outline that another slide is needed, you can create it directly in the Outline view (pressing *Enter* when the cursor is on the first line of the slide) or you can change to the Normal view to create it, then return to Outline view to continue reviewing the slides against your outline.

If a slide is not in the correct sequence, you can move it to its proper place.

- a) In the slide pane, click the slide icon of the slide you are moving.
- b) Drag and drop it where you want it.

Notes view

Use the Notes view to add notes to a slide.

- 1) Click the **Notes** tab in the Workspace (Figure 4).
- 2) Select the slide to which you want to add notes.
 - Click the slide in the Slide pane, or
 - Use the **Previous Slide** and **Next Slide** buttons to move to the desired slide in the Navigator.
- 3) In the text box below the slide, click on the words *Click to add notes* and begin typing.

You can resize the Notes text box using the green resizing handles and move it by placing the pointer on the border, then clicking and dragging. To make changes in the text style, press the *F11* key to open the Styles and Formatting window.

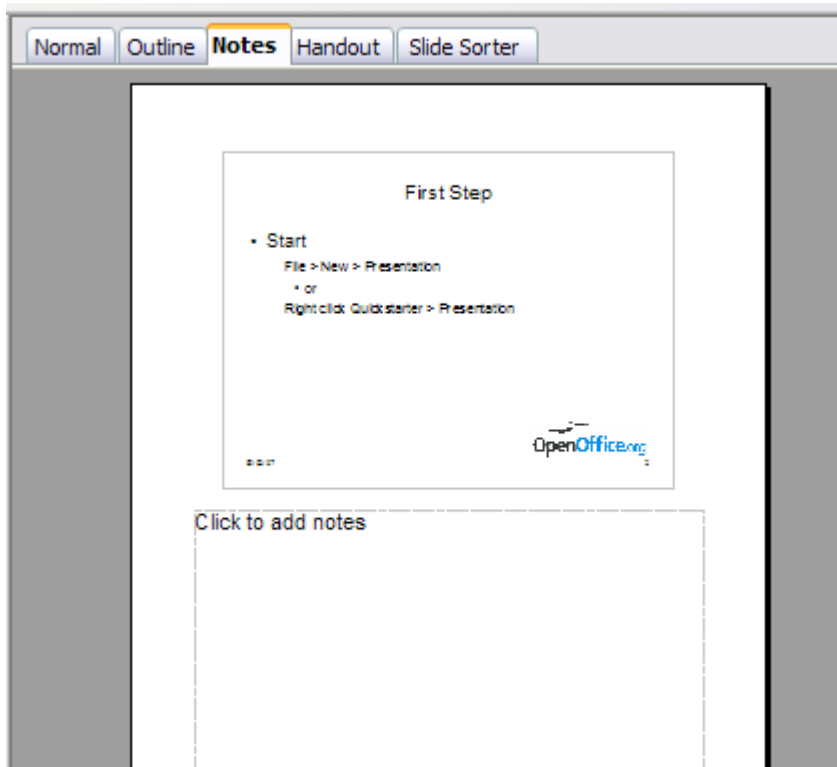


Figure 4: Notes view

Slide Sorter view

Slide Sorter view contains all the slide thumbnails (Figure 5). Use this view to work with a group of slides or with only one slide.

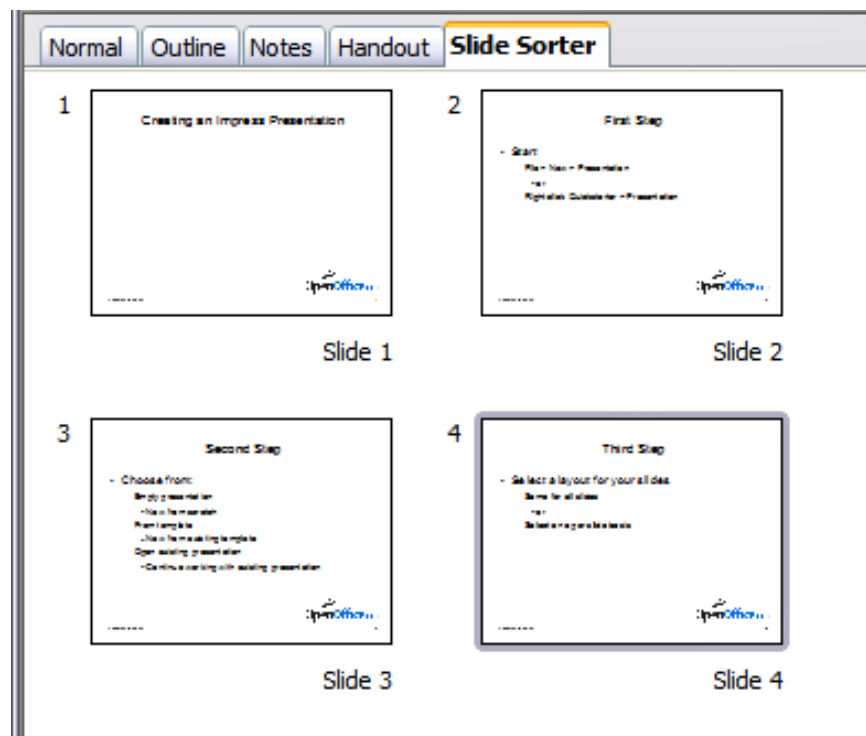


Figure 5: Slide Sorter view

Change the number of slides per row if desired.

- 1) Check **View > Toolbars > Slide View** to make the Slide View toolbar (Figure 6) visible.



Figure 6: Slide Sorter and Slide View toolbars

- 2) Adjust the number of slides (up to a maximum of 15).
- 3) When you have adjusted the number of slide per row, click **View > Toolbars > Slide View** to remove this toolbar from view.

To move a slide in a presentation in the Slide Sorter:

- 1) Click the slide. A thick black border is drawn around it.
- 2) Drag and drop it to the location you want.
 - As you move the slide, a black vertical line appears to one side of the slide.
 - Drag the slide until this black vertical line is located where you want the slide to be moved.

To select a group of slides, use one of these methods:

- Use the *Control* (*Ctrl*) key: Click on the first slide and, while pressing Control, select the other desired slides.
- Use the *Shift* key: Click on the first slide, and while pressing the *Shift* key, click on the final slide in the group. This selects all of the other slides in between the first and the last.
- Use the mouse cursor: Click on the first slide to be selected. Hold down the left mouse button. Drag the cursor to the last slide thumbnail. A dashed outline of a rectangle forms as you drag the cursor through the slide thumbnails and a thick black border is drawn around the selected slides. Make sure the rectangle includes all the slides you want to select.

To move a group of slides:

- 1) Select the group.
- 2) Drag and drop the group to their new location. The same vertical black line appears to show you where the group of slides will go.

Note Selection of a group of slides works in a rectangular fashion. Slides that do not fall within a rectangular area cannot be grouped.

You can work with slides in the Slide Sorter view just as you can in the Slide pane. To make changes, right-click a slide and do any of the following using the pop-up menu:

- Add a new slide after the selected slide.
- Delete the selected slide.
- Change the slide layout.
- Change the slide transition.
 - For one slide, click the slide to select it. Then add the desired transition.
 - For more than one slide, select the group of slides and add the desired transition.
- Mark a slide as hidden. Hidden slides are not shown in the slide show.
- Copy or cut and paste a slide.

Handout view

Handout view is for setting up the layout of your slide for a printed handout. Click the *Handout* tab in the workspace, then choose **Layouts** in the Tasks pane. Layout contains five choices: 1, 2, 3, 4, 6, or 9 slides per page (Figure 7).

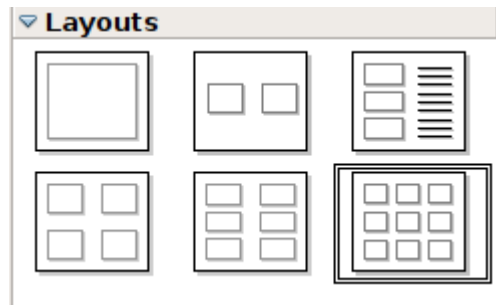


Figure 7: Handout layouts

To print a handout:

- 1) Select the slides using the Slide Sorter. (Use the steps listed in selecting a group of slides on page 13.)
- 2) Select **File > Print** or press *Control+P* to open the Print dialog.
- 3) Select **Options** in the bottom left corner of the Print dialog.
- 4) Check **Handouts** in the *Contents* section, and then click **OK**.
- 5) Click **OK** to close the Print dialog.

Creating a new presentation

This section describes how to set up a new presentation. The settings selected here are general: they apply to all the slides.

Planning a presentation

The first thing to do is to decide what you are going to do with the presentation. For example, putting a group of digital photos together in a presentation requires very little planning. However, using a presentation to increase the knowledge of others about your topic requires much more planning.

You need to ask and answer many questions before you begin creating a presentation. If you are not acquainted with creating presentations, the answers will be more general. Those who have created a variety of presentations in the past will want to have more specific answers.

Who is to see the presentation? How will it be used? What is the subject matter? What should be in its outline? How detailed should the outline be? Will an audio file be played? Is animation desirable? How should the transition between slides be handled? These are some of the many questions that should be asked, answered, and written down before creating the presentation. Sound and animation are more advanced topics and are explained in the *Impress Guide*.

Again, it is not always necessary at this point to have specific answers to every question. Making an outline is extremely important. You may already know exactly what some of the slides will contain. You may only have a general idea of what you want on some of the slides. That is alright. You can make some changes as you go. Change your outline to match the changes you make in your slides.

The important part is that you have a general idea of what you want and how to get it. Put that information on paper. That makes it much easier to create the presentation.

Using the Presentation Wizard

You can start Impress in several ways:

- From the OOo Welcome screen, if no component is open.
- From the system menu or the OOo Quickstarter. Details vary with your operating system; see Chapter 1 for more information.
- From any open component of OOo. Click the triangle to the right of the **New** icon on the main toolbar and select *Presentation* from the drop-down menu or choose **File > New > Presentation** from the menu bar.

When you start Impress, the Presentation Wizard appears (Figure 8).

Tip

If you do not want the wizard to start every time you launch Impress, select the **Do not show this wizard again** checkbox. You can enable it again later if you need under **Tools > Options > OpenOffice.org Impress > General > Wizard**, and select the **Start with wizard** checkbox.

Leave the **Preview** checkbox selected, so templates, slide designs, and slide transitions appear in the preview box as you choose them.

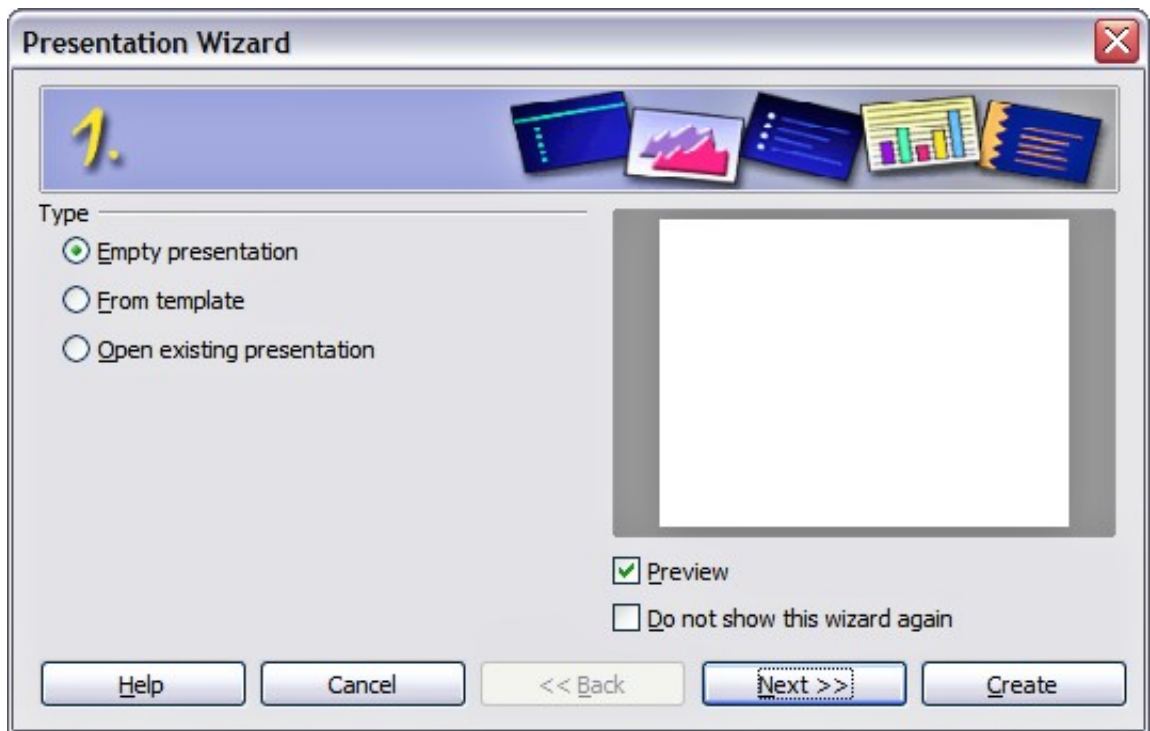


Figure 8. Choosing the type of presentation

- 1) Select *Empty Presentation* under **Type**. It creates a presentation from scratch.

Note

From Template uses a template design already created as the basis for a new presentation. The wizard changes to show a list of available templates. Choose the template you want.

Open Existing Presentation continues work on a previously created presentation. The wizard changes to show a list of existing presentations. Choose the presentation you want. Both of these options are covered in the *Impress Guide*.

- 2) Click **Next**. Figure 9 shows the Presentation Wizard step 2 as it appears if you selected *Empty Presentation* at step 1. If you selected *From Template*, an example slide is shown in the Preview box.

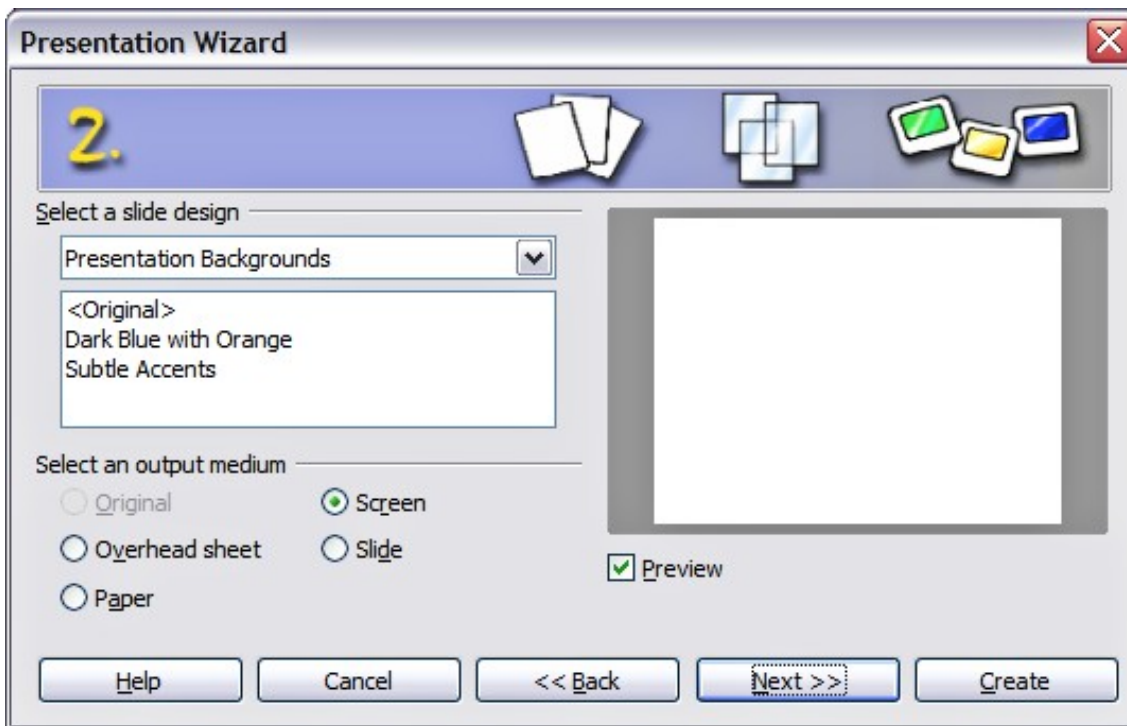


Figure 9. Selecting a slide design

- 3) Choose a design under **Select a slide design**. The slide design section gives you two main choices: *Presentation Backgrounds* and *Presentations*. Each one has a list of choices for slide designs. If you want to use one of these other than <Original>, click it to select it.
- The types of *Presentation Backgrounds* are shown in Figure 9. By clicking an item, you will see a preview of the slide design in the Preview window. Impress contains three choices under *Presentations*: <Original>, *Introducing a New Product*, and *Recommendation of a Strategy*.
 - <Original> is for a blank presentation slide design.
 - Both *Introducing a New Product* and *Recommendation of a Strategy* have their own prepackaged slide designs. Each design appears in the Preview window when its name is clicked.

Note

Introducing a New Product and *Recommendation of a Strategy* are prepackaged presentation templates. They can be used to create a presentation by choosing **From template** in the first step (Figure 8).

- 4) Select how the presentation will be used under **Select an output medium**. Most often, presentations are created for computer screen display. Select *Screen*.

- 5) Click **Next**. The **Presentation** Wizard step 3 appears.

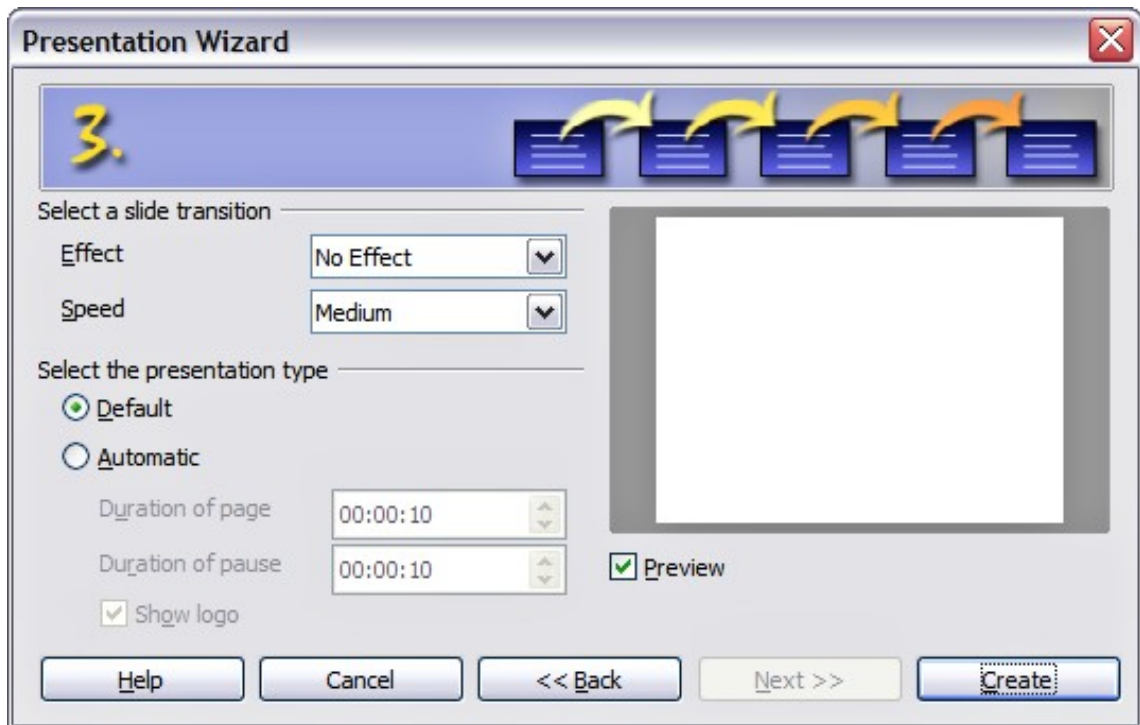


Figure 10. Selecting a slide design

- 6) Choose the desired slide transition from the *Effect* drop-down menu.
- 7) Select the desired speed for the transition between the different slides in the presentation from the **Speed** drop-down menu. *Medium* is a good choice for now.
- 8) Click **Create**. A new presentation is created.

Tip

You might want to accept the default values for both *Effect* and *Speed* unless you are skilled at doing this. Both of these values can be changed later while working with **Slide transitions** and **animations**. These two are explained in more detail in Chapter 9 of the *Impress Guide*.

Note

If you selected *From template* on step 1 of the Wizard, the **Next** button will be active on step 3 and other pages will be available. These pages are not described here.

Formatting a presentation

Now put your presentation together based on your outline.

Caution



Remember to save frequently while working on the presentation, to prevent any loss of information should something unexpected occur. You might also want to activate the AutoRecovery function (**Tools > Options > Load/Save > General**). Make sure **Save AutoRecovery information every** is selected and that you have entered a recovery frequency.

Creating the first slide

The first slide is normally a title slide. Decide which of the layouts will best suit your purposes for this first slide: simplicity would be appropriate in this instance. You can use the prepackaged layouts available in the Layout section of the Tasks pane. Suitable layouts are *Title Slide* (which also contains a section for a subtitle) or *Title Only*, however all but one layout (the blank one) contains a title section, so you are not restricted to the two layouts described here.

If you do not know the names for the prepackaged layouts, you can use the tooltip feature. Position the cursor on an icon in the Layout section (or on any toolbar icon) and its name will be displayed in a small rectangle.

Tip

If the tooltips are not enabled, you can enable them. From the main menu, select **Tools > Options > OpenOffice.org > General > Help** and mark the **Tips** checkbox. If the **Extended tips** checkbox is also marked, you will get more detailed tooltip information, but the tooltip names themselves will not be provided.

Select a layout in the Layout section of the Tasks pane by clicking on it: it appears in the Workspace. To create the title, click on “*Click to add title*” (assuming the *Blank Slide* layout was not used) and then type the title text. Adjustments to the formatting of the title can be done by pressing the *F11* key, right-clicking the *Title* presentation style entry, and selecting **Modify** from the pop-up menu.

If you are using the *Title Slide* layout, click on *Click to add text* to add a *subtitle*. Proceed as above to make adjustments to the formatting if required.

Inserting additional slides

The steps for inserting additional slides are basically the same as for selecting the title page. It is a process that has to be repeated for each slide. Unless you are using more than one slide master, your only concern is the *Layouts* section of the Tasks pane (Figure 11).



Figure 11: Choosing a slide layout

First insert all the slides your outline indicates you will need. Only after this should you begin adding special effects such as custom animation and slide transitions.

Step 1: Insert a new slide. This can be done in a variety of ways—take your pick.

- **Insert > Slide.**
- Right-click on the present slide, and select **Slide > New Slide** from the pop-up menu.
- Click the **Slide** icon in the *Presentation* toolbar (Figure 12).

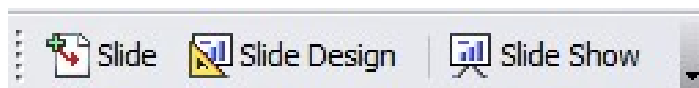


Figure 12: Presentation toolbar

Step 2: Select the layout slide that best fits your needs.

Step 3: Modify the elements of the slide. At this stage, the slide consists of everything contained in the slide master, as well as the chosen layout slide, so this includes removing unneeded elements, adding needed elements (such as pictures), and inserting text.

Caution

Changes to any of the pre-packaged layouts can only be made using **View > Normal**, which is the default. Attempting to do this by modifying a slide master may result in unpredictable results and requires extra care as well as some trials and errors.

- 1) Remove any element on the slide that is not required.
 - Click the element to highlight it. (The green squares show it is highlighted.)
 - Press the *Delete* key to remove it.
-

Tip

Sometimes you will accidentally select the wrong layout slide or decide to change it. This is safe and does not cause loss of the contents already on the slide.

- 2) Add any elements to the slide that you do need.
 - a) Adding pictures to the clipart frame, if your chosen layout includes one:
 - Double-click the picture within the frame. The Insert picture dialog opens.
 - Browse to the location of the picture you want to include. To see a preview of the picture, check **Preview** at the bottom of the Insert picture dialog.
 - Select the picture and click **Open**.
 - Resize the picture as necessary. Follow the directions in the Caution note below.
 - b) Adding pictures from graphic files to places other than the clipart frame:
 - **Insert > Picture > From File**. The Insert picture dialog opens.
 - Browse to the graphic file. To see a preview of the picture, check **Preview** at the bottom of the Insert picture dialog. Select a picture and click **Open**.
 - Move the picture to its location.
 - Resize the picture, if necessary.
 - c) Adding OLE Objects is an advanced technique covered in Chapter 7 of the *Impress Guide*.

Caution

When resizing a graphic, right-click the picture. Select **Position and Size** from the context menu and make sure that **Keep ratio** is selected. Then adjust the height or width to the size you need. (As you adjust one dimension both dimensions will change.) Failure to do so will cause the picture to become distorted. Remember also that resizing a bitmap image will reduce its quality; better by far to create an image of the desired size outside of Impress.

- 3) Adding text to a slide: If the slide contains text, click on *Click to add an outline* in the text frame and then type your text. The Outline styles from 1 to 10 are automatically applied to the text as you insert it. You can change the outline level of each paragraph as well as its position within the text using the arrow buttons on the *Text Formatting* toolbar.

Step 4: To create additional slides, repeat steps 1–3.

Modifying the appearance of slides

To change the background and other characteristics of all slides in the presentation, you need to modify the slide master or choose a different slide master.

A *Slide Master* is a slide with a specified set of characteristics which is used as the beginning point for creating other slides. These characteristics include the background, objects in the background, formatting of any text used, and any background graphics.

Note

OOo uses three interchangeable terms for this one concept. *Master slide*, *slide master*, and *master page* all refer to a slide that is used to create other slides. This book, however, will use only the term *slide master*, except when describing the user interface.

Impress has 28 prepackaged slide masters, found in the Master Pages section of the Tasks pane. You can also create and save additional slide masters.

Modifying the slide show

Now review the entire presentation and answer some questions. Run the slide show at least once before answering them. You might want to add some questions of your own.

- 1) Are the slides in the correct order? If not, some of them will need to be moved.

- 2) Would an additional slide make a particular point clearer? If so, another slide needs to be created.
- 3) Would some custom animations help some of the slides? (Advanced technique.)
- 4) Should some of the slides have a different slide transition than others? The transition of those slides should be changed.
- 5) Do some of the slides seem unnecessary? Delete the affected slide or slides after checking if they are indeed unnecessary.

Tip

If one or more slides seems to be unnecessary, hide the slide or slides, and view the slide show a few more times to make sure. To hide a slide, right-click the slide in the Slides pane and select **Hide Slide** in the pop-up menu. Do not delete a slide until you have done this, otherwise you may have to create that slide again.

Once you have answered these and your own questions, you should make the necessary changes. This is done most easily in the Slide Sorter view. If you need one or more new slides, create them using the steps listed in “Inserting additional slides” on page 20.

Slide masters and styles

A *slide master* is a slide that is used as the starting point for other slides. It is similar to a page style in Writer: it controls the basic formatting of all slides based on it. A slide show can have more than one slide master.

Note

OOo uses three terms for this one concept. *Master slide*, *slide master*, and *master page* all refer to a slide which is used to create other slides. This book uses the term *slide master*, except when describing the user interface.

A slide master has a defined set of characteristics, including the background color, graphic, or gradient; objects (such as logos, decorative lines, and other graphics) in the background; headers and footers; placement and size of text frames; and the formatting of text. All of the characteristics of slide masters are controlled by *styles*. The styles of any new slide you create are inherited from the slide master from which it was created. In other words, the styles of the slide master are available and applied to all slides created from that slide master. Changing a style in a slide master results in changes to all the

slides based on that slide master; it is, however, possible to modify each individual slide without affecting the slide master.

Slide masters have two types of styles associated with them: *presentation styles* and *graphic styles*. The pre-packaged presentation styles can be modified, but new presentation styles cannot be created. However, not only can the prepackaged graphic styles be modified, but new graphic styles can also be created. What styles to use and when to use them is described later in this chapter.

Presentation styles affect three elements of a slide master: the background, background objects (such as icons, decorative lines, and text frames), and the text placed on the slide. Text styles are further divided into *Notes*, *Outline 1* through *Outline 9*, *Subtitle*, and *Title*. The outline styles are used for the different levels of the outline to which they belong. For example, Outline 2 is used for the subpoints of Outline 1, and Outline 3 is used for the subpoints of Outline 2.

Graphic styles affect many of the elements of a slide. Notice that text styles exist in both the presentation and graphic style selections.

Working with slide masters

Impress comes with 28 prepackaged slide masters. They are shown in the Master Pages section of the Tasks pane (Figure 13). This section has three subsections: *Used in This Presentation*, *Recently Used*, and *Available for Use*. Click the + sign next to the name of a subsection to expand it to show thumbnails of the slides, or click the – sign to collapse the subsection to hide the thumbnails.

Each of the slide masters shown in the *Available for Use* list is from a template of the same name. If you have created your own templates, or added templates from other sources, slide masters from those templates will also appear in this list.



Figure 13: Available master pages (slides)

Creating slide masters

You can create a new slide master in a similar way to modifying the default slide master.

To start, enable editing of slide masters by **View > Master > Slide Master**.

On the Master View toolbar, click the **New Master** icon.

A second slide master appears in the Slides pane. Modify this slide master to suit your requirements. It is also recommended that you rename this new slide master: right-click on the slide in the Slides pane and select **Rename master** from the popup menu.

When you are done, close the Master View toolbar to return to normal slide editing mode.

Applying a slide master

In the Tasks Pane, be sure the Master Pages section is showing.

To apply one of the slide masters to *all slides* in your presentation, click on it in the list.

To apply a different slide master to one or more *selected slides*:

- 1) In the Slide Pane, select the slides you want to change.
- 2) In the Tasks Pane, right-click on the slide master you want to apply to the selected slides, and click **Apply to Selected Slides** on the pop-up menu.

Loading additional slide masters

Sometimes, in the same set of slides, you may need to mix multiple slide masters that may belong to different templates. For example, you may need a completely different layout for the first slide of the presentation, or you may want to add to your presentation a slide from a different presentation (based on a template available on the hard disk).

The Slide Design dialog makes this possible. Access this dialog either from the menu bar (**Format > Slide design**) or by right-clicking on a slide in the Slides pane.

The main window in the dialog shows the slide masters already available for use. To add more:

- 1) Click the **Load** button.

- 2) Select in the new dialog the template from which to load the slide master. Click **OK**.
- 3) Click **OK** again to close the slide design dialog.

The slide masters in the template you selected are now shown also in the Master Pages section of the Tasks pane in the *Available for use* subsection.

Note

The slide masters you have loaded will also be available the next time you load the presentation. If you want to delete the unused slide masters, click the corresponding checkbox in the Slide Design dialog. Due to a bug, if the slide master was not used in the presentation, it is removed from the list of available slide masters anyway.

Tip

To limit the size of the presentation file, you may want to minimize the number of slide masters used.

Modifying a slide master

The following items can be changed on a slide master:

- Background (color, gradient, hatching, or bitmap)
- Background objects (for example, add a logo or decorative graphics)
- Size, placement, and contents of header and footer elements to appear on every slide
- Size and placement of default frames for slide titles and content

Before working on the slide master, make sure that the Styles and Formatting window is open.

To select the slide master for modification:

- 1) Select **View > Master > Slide Master** from the menu bar. This unlocks the properties of the slide master so you can edit it.
- 2) Click *Master Pages* in the Tasks pane. This gives you access to the pre-packaged slide masters.
- 3) Click on the slide master you want to modify among the ones available (Figure 13).
- 4) Make changes as required, then click the **Close Master View** icon on the Master View toolbar. For details, see Chapter 2 of the *Impress Guide*
- 5) Save the file before continuing.

Caution



Any changes made to one slide when in Master View mode will appear on *all* slides using this slide master. Always make sure you close Master View and return to Normal view before working on any of the presentation slides. Select **View > Normal** from the menu bar, or click **Close Master View** in the Master View toolbar to return to the normal slide view.

The changes made to one of the slides in Normal view (for example changes to the bullet point style or the color of the title area and so on...) will not be overridden by subsequent changes to the slide master. There are cases, however, where it is desirable to revert a manually modified element of the slide to the style defined in the slide master: to do that, select that element and choose **Format > Default Formatting** from the menu bar.

Sometimes you may want to try several of the available layouts to see which one is more suitable for your contents. Applying a layout only requires that you open the Layouts section of the Tasks pane and double-click on the new layout. Alternatively you can right-click on the desired layout thumbnail and select **Apply to selected slide** from the pop-up menu.

Adding text to all slides

Some of the supplied slide masters have text objects in the footer. You can add other text objects to the master page for your slides to act as a header or a footer.

- 1) Choose **View > Master > Slide Master** from the menu bar.
- 2) On the **Drawing** toolbar (see Figure 9), select the **Text** icon.
- 3) Click once and drag in the master page to draw a text object, and then type or paste your text into the object or add fields as described below.
- 4) Choose **View > Normal** when you are finished.

To add a field, such as the date or page number, to a text object in the header or footer, choose **Insert > Fields**, and select the required field from the submenu. If you want to edit a field in your slide, select it and choose **Edit > Fields**.

The fields you can use in Impress are:

- Date (fixed)
- Date (variable)—updates automatically when you reload the file
- Time (fixed)
- Time (variable)—updates automatically when you reload the file

- Author—First and last names listed in the OpenOffice.org user data
- Page number (slide number)
- File name

Tip

To change the number format (1,2,3 or a,b,c or i,ii,iii, etc.) for the page number field, choose **Format > Page** and then select a format from the list in the **Layout Settings** area.

To change the author information, go to **Tools > Options > OpenOffice.org > User Data**.

Adding and formatting text

Text in slides is contained in *text boxes*.

There are two ways to add text boxes to a slide:

- Choose a predefined layout from the *Layouts* section of the Tasks pane. These text boxes are called **AutoLayout** text boxes.
- Create a text box using the text tool.

Using text boxes created from the Layout pane

In Normal view:

- 1) Click in the text box that reads **Click to add text, Click to add an outline**, or a similar notation.
- 2) Type or paste your text in the text box.

Using text boxes created from the text box tool

In Normal View:

- 1) Click on the **Text** icon **T** on the Drawing toolbar. If the toolbar with the text icon is not visible, choose **View > Toolbars > Drawing**.
- 2) Click and drag to draw a box for the text on the slide. Do not worry about the vertical size and position—the text box will expand if needed as you type.
- 3) Release the mouse button when finished. The cursor appears in the text box, which is now in edit mode (gray hashed border with green resizing handles shown in Figure 14).
- 4) Type or paste your text in the text box.
- 5) Click outside the text box to deselect it.

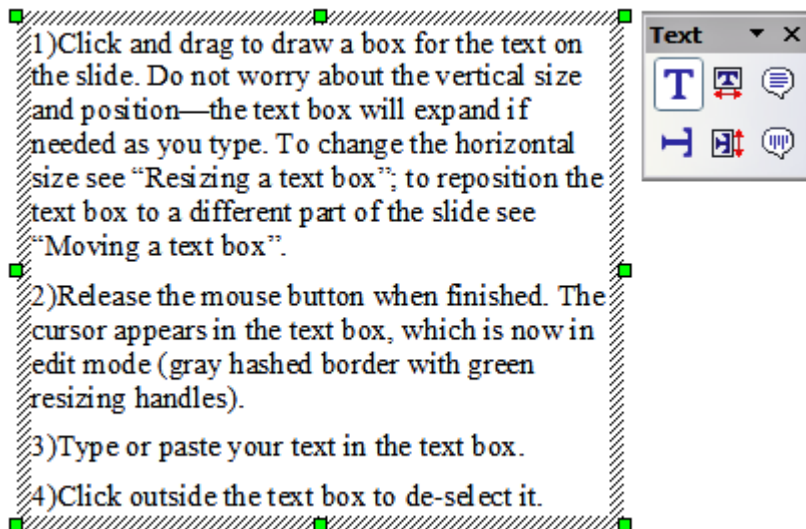



Figure 14: Selected text box showing the green resizing handles and text toolbar

You can move, resize, and delete text boxes. For more information, see Chapter 3 in the *Impress Guide*.

Note

In addition to the normal text boxes where text is horizontally aligned, it is possible to insert text boxes where the text is aligned vertically. This choice is available only when Asian languages are enabled in **Tools > Options > Language Settings > Languages**.

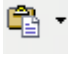
Click on the  button in the drawing toolbar to create a vertical text box. Note that when editing the contents, the text is displayed horizontally.

Pasting text

You can insert text into a text box by copying it from another document and pasting it into Impress. However, the pasted text will probably not match the formatting of the surrounding text or that of the other slides in the presentation. This may be what you want on some occasions, however in most cases you want to make sure that the presentation does not become a patchwork of different paragraph styles, font types, bullet points and so on. There are several ways to ensure consistency; these methods are explained below.

Pasting unformatted text

It is normally good practice to paste text without formatting and apply the formatting later. To paste without formatting, either press *Control+Shift+V* and then select **Unformatted text** from the dialog that appears, or click on the small black triangle next to the paste

symbol in the standard toolbar  and select **Unformatted text**. The unformatted text will be formatted with the outline style at the cursor position in an **AutoLayout** text box or with the default graphic style in a normal text box.

Formatting pasted text

If pasting the text into an **AutoLayout** area, then to give the pasted text the same look and feel of the rest of the presentation. you need to apply the appropriate *outline style* to the text.

- 1) Paste the text in the desired position. Do not worry if it does not look right: it will in a minute.
- 2) Select the text you have just pasted.
- 3) Select **Format > Default formatting** from the menu bar.
- 4) Use the four arrow buttons in the Text Formatting toolbar



to move the text to the appropriate position and give it the appropriate outline level. The button with the arrow pointing left promotes the list entry by one level (for example from Outline 3 to Outline 2), the right arrow button demotes the list entry by one level, the up and down arrow buttons move the list entry.

- 5) Apply manual formatting as required to sections of the text (to change font attributes, tabs, and so on).

If you are pasting text in a **text box**, you can still use styles to quickly format the text. Note that *one and only one* graphic style can be applied to the copied text. To do that:

- 1) Paste the text in the desired position.
- 2) Select the text you have just pasted.
- 3) Select the desired graphic style.
- 4) Apply manual formatting as required to sections of the text.

Tip

Presentation styles are very different from Writer styles and are applied in quite a different way.

Creating bulleted and numbered lists

The procedure to create a bulleted or numbered list is quite different depending on the type of text box used, although the tools to manage the list and customize the appearance are the same.

In text boxes created automatically by Impress (called AutoLayout), the outline styles available are by default bulleted lists, while for normal text boxes an additional step is required to create a bulleted list.

Creating lists in AutoLayout text boxes

Every text box included in the available layouts is already formatted as a bulleted list, therefore to create a bulleted list the only necessary steps are:

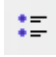
- 1) From the Layout pane, choose a slide design that contains a text box. Those are easily recognizable from the thumbnail.
- 2) Click in the text box that reads **Click to add an outline**.
- 3) Type the text, then press *Enter* to start a new bulleted line.
- 4) The default list type is a bulleted list. The mechanisms to change the list from bulleted to numbered and vice versa are explained in “Changing the appearance of the list” on page 32.

Tip

Press *Shift + Enter* to start a new line without creating a new bullet or number. The new line will have the same indentation of the previous line. Press instead the button **Bullets On/Off** on the text formatting toolbar for a line without bullet. If the text formatting toolbar is not showing, enable it selecting **View > Toolbar > Formatting** in the menu bar.

Creating lists in other text boxes

To create a list in a text box, follow these steps:

- 1) Place the cursor in the text box.
- 2) Click the **Bullets On/Off** button  on the text formatting toolbar. If the text formatting toolbar is not showing, enable it by selecting **View > Toolbar > Formatting** from the menu bar.
- 3) Type the text and press *Enter* to start a new bulleted line.
- 4) The default list type is a bulleted list. The mechanisms to change the appearance of the list are explained on page 32.

Creating a new outline level


- 1) If necessary, press *Enter* to begin a new line.
- 2) Press *Tab*. Each time you press *Tab* the line indents to the next outline level. Pressing *Enter* creates a new line at the same level as the previous one. To return to the previous level, press *Shift+Tab*.

In the AutoLayout text boxes, promoting or demoting an item in the list corresponds to applying a different outline style, so the second outline level corresponds to Outline 2 style, the third to Outline 3 style, and so on.


Note

Unlike styles in Writer, do not try to change the outline level by selecting the text and then clicking the desired outline style. Due to the way the presentation styles work, it is not possible to apply them in this way.

Changing the appearance of the list

You can fully customize the appearance of a list, changing the bullet type or numbering for the entire list or for single entry. All of the changes can be made using the Bullets and Numbering dialog, which is accessed by selecting **Format > Bullets and Numbering** or by clicking on the **Bullets and Numbering** icon  on the text formatting toolbar.

For the entire list:

- 1) Select the entire list or click on the gray border of the text box so that just the green resizing handles are displayed.
- 2) Select **Format > Bullets and Numbering** or click on the **Bullets and Numbering** icon .
- 3) The Bullets and Numbering dialog contains five tabs: Bullets, Numbering type, Graphics, Position, and Customize.
 - If a bullet list is needed, select the desired bullet style from the six default styles available on the *Bullets* page.
 - If a graphics style is needed, select one from those available on the *Graphics* page.
 - If a numbered list is needed, select one of the 6 default numbering styles on the *Numbering type* page.


For a single line in the list:

- 1) Click anywhere in the line to place the cursor in it.
- 2) Follow steps 2–4 of the previous instruction set.

If the list was created in an AutoLayout text box, then an alternative way to change the entire list is to modify the Outline styles. Changes made to the outline style will apply to all the slides using them. Sometimes this is what you want; sometimes it is not, so some care must be taken.

Creating tables

For displaying tabular data, you can insert basic tables directly into your slides in a number of ways:

- Use the **Insert > Table** menu option.
- With the Table button on the main toolbar. 
- With the *Table Design* button on the table toolbar.
- By selecting a Style option from the Table Design section of the Tasks pane.

Each method opens the Insert Table dialog, shown in Figure 15. Alternatively, clicking on the black arrow next to the Table button displays a graphic that you can drag and select the number of rows and columns for your table.



Figure 15. Creating a table with the Insert Table dialog.

Note

Selecting from any of the styles in the Table Design section of the Tasks pane creates a table based on that style. If you create a table by another method, you can still apply a style of your choice later.

With the table selected, the Table toolbar should appear. If it does not, you can access it by selecting **View > Toolbars > Table**. The Table toolbar offers many of the same buttons as the table toolbar in Writer, with the exception of functions like Sort and Sum for performing calculations. For those functions, you need to use a spreadsheet inserted from Calc (discussed below).

After the table is created, you can modify it in much the same ways as you would modify a table in Writer: adding and deleting rows and columns, adjusting width and spacing, adding borders, background colors and so on. Detailed information on working with tables and the Table Properties dialog can be found in Chapter 9 of the *Writer Guide*.

By modifying the style of the table from the Table Design section of the Tasks pane, you can quickly change the appearance of the table or any newly created tables based on the Style options you select. You can choose to add emphasis to a header and total row as well as the first and last columns of the table, and apply a banded appearance to the rows and columns.

Having completed the table design, entering data into the cells is similar to working with text box objects. Click in the cell you wish to add data to, and begin typing. To move around cells quickly, use the following key options:

- The *arrow keys* move the cursor to the next table cell if the cell is empty, otherwise they move the cursor to the next character in the cell.
- The *Tab* key moves to the next cell, skipping over the contents of the cell; *Shift+Tab* move backwards in this manner.

Adding graphics, spreadsheets, charts, and other objects

Graphics in Impress are handled much the same as graphics in Draw. For more information, see Chapter 7 (Getting Started with Draw), the *Draw Guide*, or Chapters 4, 5, and 6 in the *Impress Guide*.

Spreadsheets embedded in Impress include most of the functionality of spreadsheets in Calc and are therefore capable of performing extremely complex calculations and data analysis. If you need to analyze your data or apply formulas, these operations are best performed in a Calc spreadsheet and the results displayed in an embedded Impress spreadsheet.

To add a spreadsheet to a slide, select the corresponding layout in the list of predefined layouts in the Tasks pane. This inserts a placeholder for a spreadsheet in the center of a slide. To insert data and modify the formatting of the spreadsheet, it is necessary to *activate* it and enter the edit mode. To do so, double-click inside the frame with the green handles.

Alternatively, select **Insert > Spreadsheet** from the main menu bar. This opens a small spreadsheet in the middle of the slide. When a spreadsheet is inserted using this method, it is already in edit mode. It is also possible to insert a spreadsheet as an OLE object.

To add a chart to a slide, select the corresponding layout in the list of predefined layouts in the task pane or use the **Insert Chart** feature.

Impress offers the capability of inserting in a slide various other types of objects such as music or video clips, Writer documents, Math formulas, generic OLE objects and so on. A typical presentation may contain movie clips, sound clips, OLE objects and formulas; other objects are less frequently used since they do not appear during a slide show.

For details on using spreadsheets, charts, and other objects in Impress, refer to Chapter 7 of the *Impress Guide*.

Setting up the slide show

Impress gives you the tools to organize and display a slide show, including:

- Which slides to show and in what order
- Whether to run the show automatically or manually
- Transitions between slides
- Animations on individual slides
- Interactions: what happens when you click a button or link

Chapter 9 of the Impress Guide describes these tools.

Most tasks associated with putting together a show from your slides are best done in Slide Sorter view. Choose **View > Slide Sorter** from the menu bar or click the Slide Sorter tab at the top of the workspace. All of your slides appear in the workspace; you may need to scroll to see them all.

Custom animations are found on the Tasks pane. This is an advanced technique and is explained in Chapter 9 (Slide Shows) in the *Impress Guide*.

Your first slide show should probably have the same slide transition for all slides. Setting *Advance slide* to **On mouse click** is the default and a simple setting. If you want each slide to be shown for a specific amount of time, click **Automatically after** and enter the number of seconds. Click **Apply to all slides**.

Slide transition choices are also found on the Tasks pane. For more information about slide transitions, see Chapter 9 in the *Impress Guide*.

Tip The Slide transition section has a very useful choice: *Automatic preview*. Select its checkbox. Then when you make any changes in a slide transition, the new slide is previewed in the Slide Design area, including its transition effect.

Running the slide show

To run the slide show, do one of the following:

- Click **Slide Show > Slide Show**.
- Click the Slide Show button on the Presentation toolbar.

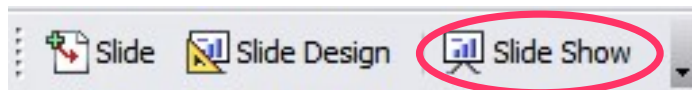


Figure 16: Presentation Toolbar

- Press *F5* or *F9*.

If the slide transition is *Automatic after x seconds*, let the slide show run by itself.

If the slide transition is *On mouse click*, do one of the following to move from one slide to the next:

- Use the arrow keys on the keyboard to go to the next slide or to go back to the previous one.
- Click the mouse to move to the next slide.
- Press the spacebar on the keyboard to advance to the next slide.

Right-click anywhere on the screen to open a menu from which you can navigate the slides and set other options.

To exit the slide show at any time including at the end, press the *Esc* key.