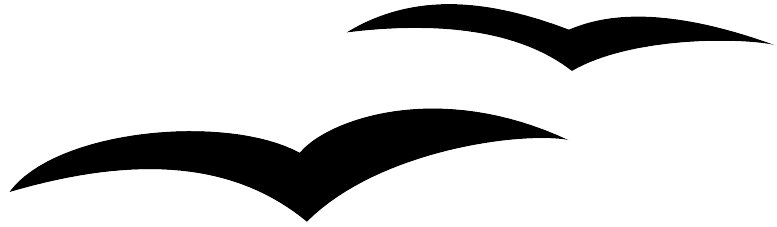


Working with Sections



Title: Working with Sections
Version: 1.0
First edition: March 2004
First English
edition: March 2004

Contents

Overview	ii
Copyright and trademark information	ii
Feedback	ii
Acknowledgments	ii
Modifications and updates	ii
What is a section?	1
Creating sections	1
Opening the Insert Section window	1
Using the Section tab	2
Using the Columns tab	5
Using the Indents tab	7
Using the Background tab	8
Using the Footnotes/Endnotes tab	10
Saving a new section	12
Maintaining sections	12
Editing and deleting sections	12
Updating links	15

Overview

This chapter shows you how to create and maintain sections in a text document using OpenOffice.org Writer 1.1.x. To understand the instructions, you need to know how to create and edit documents in Writer.

Copyright and trademark information

The contents of this Documentation are subject to the Public Documentation License, Version 1.0 (the "License"); you may only use this Documentation if you comply with the terms of this License. A copy of the License is available at:

<http://www.openoffice.org/licenses/PDL.rtf>.

The Original Documentation is *How to Work with Sections*. The Initial Writer(s) of the Original Documentation is/are Catherine Waterman © 2004. All Rights Reserved. (Initial Writer contact(s): sparkovich@att.net. The Initial Writer contact(s) is to report errors in the documentation. For questions regarding how to use the software, subscribe to the Users Mail List and post your question there: <http://support.openoffice.org/index.html>.)

All trademarks within this guide belong to legitimate owners.

Feedback

Please direct any comments or suggestions about this document to:
dev@documentation.openoffice.org

Acknowledgments

Thanks to Sophie Gautier, author of the French native-language document, *Comment Utiliser Les Différentes Sections*, which was used as a reference. This chapter has been slightly modified by Paul Miller and Jean Hollis Weber, and it has been given a new title as a chapter of the User Guide for OpenOffice.org Writer.

Modifications and updates

Version	Date	Description of Change
1.0	11 Dec 2004	First published edition.

What is a section?

A section is a block of text that has special attributes and formatting. You can use sections to:

- Write-protect text.
- Hide text.
- Dynamically insert the contents of another document.
- Add columns, margin indents, a background color, or a background graphic to a portion of your document.
- Customize the footnotes and endnotes for a portion of your document.

Creating sections

This part of the chapter shows you how to:

- Open Writer's Insert Section window.
- Use the Insert Section window to customize a new section.
- Save the new section.

Opening the Insert Section window

To open Writer's Insert Section window, follow these steps:

- 1) Place the cursor at the point in your document where you want to insert the new section. Or, select the text that you want to place in the new section.
- 2) From the main menu, choose **Insert > Section...** The Insert Section window opens.
- 3) Click the **Section** tab if it isn't already displayed. (See Figure 1.)

The Insert Section window has five tabs:

- Use the **Section** tab to set the section's attributes.
- Use the **Columns** tab to format the section into columns.
- Use the **Indents** tab to set indents in the right and left margins of the section.
- Use the **Background** tab to add color or a graphic to the section's background.
- Use the **Footnotes/Endnotes** tab to customize the section's footnotes and endnotes.

The next five parts of this chapter tell you how to use each of these five tabs.

At any time, you can reset a tab to its default settings by clicking the **Reset** button. (Note, however, that you cannot reset the **Section** tab. If you wish to undo changes to the **Section** tab, you must do so manually.)

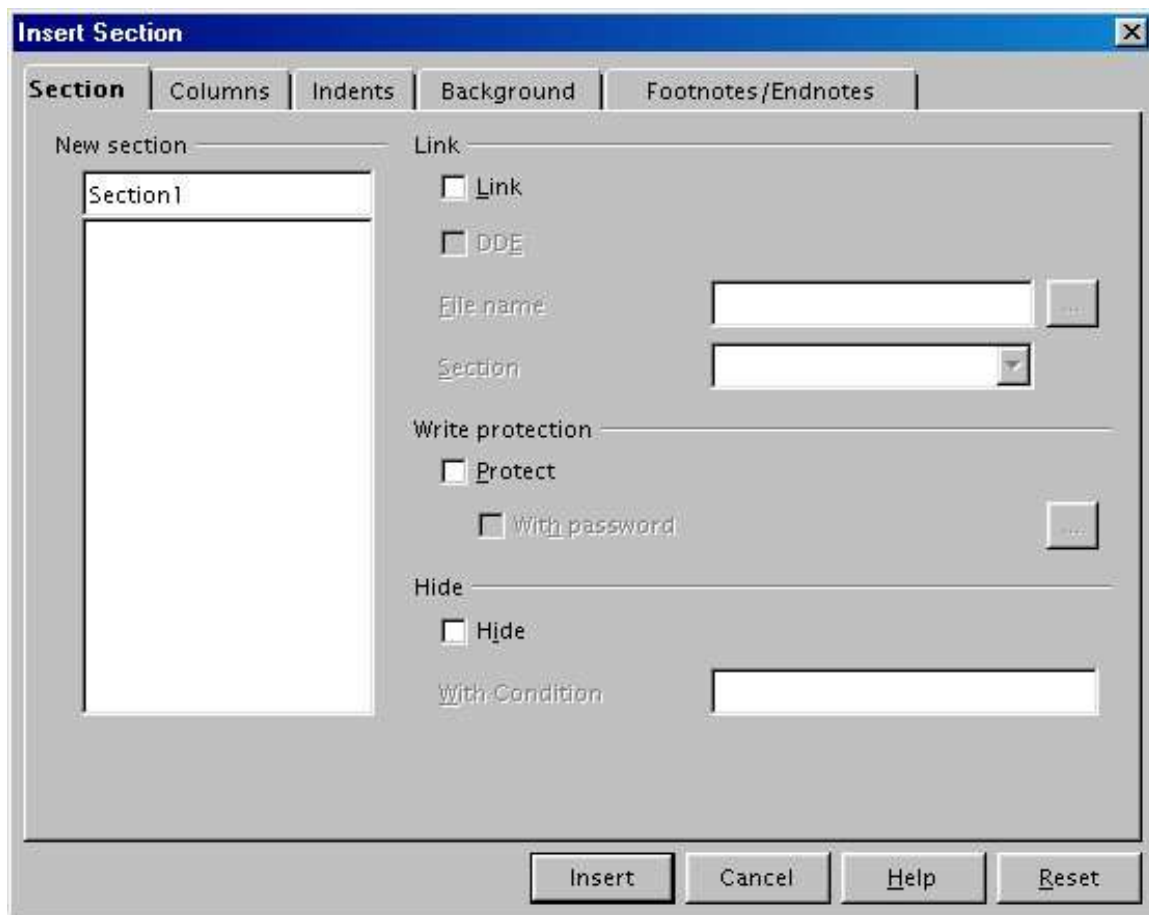


Figure 1. Section tab of Insert Section dialog

Using the Section tab

Use the **Section** tab, pictured in Figure 1, to set the attributes of the current section.

Naming sections

Writer automatically enters a name for the current section in the top box of the **New section** area. To change the name, simply type over it.

Linking sections

You can insert the contents of another document into the current section and then have Writer update the section whenever the other document is updated. This is called linking the section to the other document.

To link the current section to another document, follow these steps:

- 1) In the **Link** area (see Figure 2), check the **Link** checkbox.



Figure 2. Link area of Section tab

- 2) Click the (...) button to the right of the **File name** field. The Insert window opens.
- 3) Find and select the document whose contents you want to insert and then click the **Insert** button. The Insert window closes and the name of the selected document appears in the **File name** field.
- 4) If you want to insert only a section of the selected document, select the desired section from the **Section** drop-down list.

Note: The section must already exist in the selected document. You cannot create a section in the selected document at this point.

If you are familiar with DDE object linking and prefer to use DDE commands for linking, check the **DDE** checkbox. The **DDE command** field appears, allowing you to enter a DDE command.

You can update links automatically or manually. To learn more, see “Updating links” on page 14.

Write-protecting sections

To write-protect the current section so that its contents can't be edited, check the **Protect** checkbox in the **Write protection** area (Figure 3).

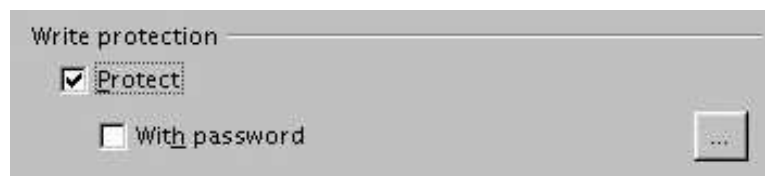


Figure 3. Write protection area of Section tab

Note: Write-protection only protects the section's contents, not its attributes or format.

To prevent others from editing the section's attributes or format, protect the section with a password, as follows:

- 1) Check the **With password** checkbox. The Enter Password window (Figure 4) opens.

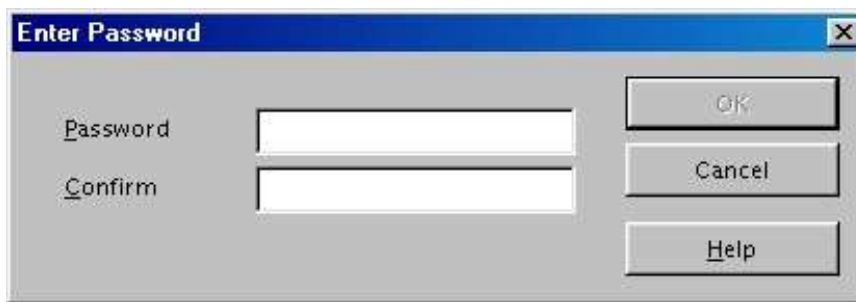


Figure 4. Enter Password window

- 2) Enter a password in the **Password** field and then confirm the password by entering it again in the **Confirm** field.

Note: Passwords must contain a minimum of 5 characters. The OK button remains inactive until you have typed at least 5 characters.

- 3) Click **OK**. The Enter Password window closes. Anyone who tries to edit the section's attributes or format will be prompted to enter the password.

Hiding sections

You can hide the current section so that it won't be displayed on the screen or printed. You can also specify conditions for hiding the section. For example, you can hide the section only from certain users.

To hide a section, check the **Hide** checkbox in the Hide area (Figure 5).



Figure 5. Hide area of Section tab

If you want to hide the section only under certain conditions, enter the desired conditions in the **With Condition** field. The syntax and operators that you use to enter conditions are the same ones that you use to enter formulas. For syntax and a list of operators, see Writer's online help under "Conditions."

Note: You can't hide a section if the section is the only content on the page or if the section is in a header, footer, footnote, endnote, frame, or table cell.

Using the Columns tab

Use the **Columns** tab, pictured in Figure 6, to format the current section into columns.

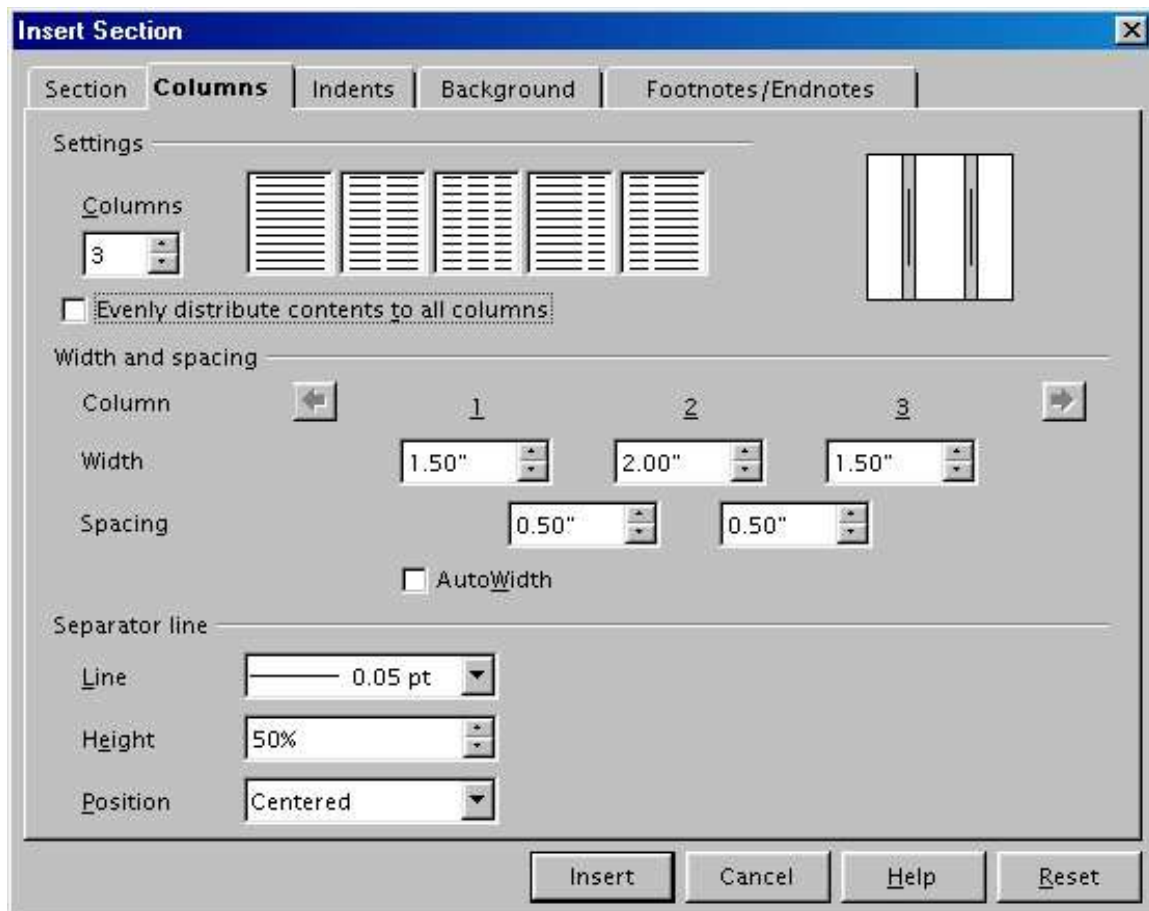


Figure 6. Columns tab of the Insert Section dialog

You can use one of Writer's predefined column layouts, or you can create a customized column layout.

The preview box, located to the right of the Settings area, shows as you work how the column layout will look.

Using a predefined column layout

The Settings area displays five predefined column layouts. To use one of them, simply click the desired layout.

Specifying the number of columns

If you prefer to create a customized column layout, you must specify the number of columns that you want. Enter the desired number in the **Columns** spin box of the Settings area.

Distributing text across columns

You can choose to distribute text across the columns in one of two ways:

- **Evenly.** If you choose to distribute text evenly, Writer will fill the first line of each column, followed by the second line of each column, and so on.
- **Newspaper-style.** If you choose to distribute text newspaper-style, Writer will fill the columns one at a time, beginning with the first column.

To distribute text evenly, check the **Evenly distribute contents to all columns** checkbox in the Settings area. Clear this checkbox if you want to distribute text newspaper-style.

Formatting column width and spacing

To create evenly-spaced columns that are all the same width, check the **AutoWidth** checkbox in the Width and spacing area.

To customize the width and spacing of the columns, follow these steps:

- 1) In the Width and spacing area, clear the **AutoWidth** checkbox.
- 2) On the Width line, enter a width for each column.
- 3) On the Spacing line, enter the amount of space that you want between each column pair.

Use the arrow keys on the Column line to scroll among the columns.

Formatting separator lines

To display separator lines between the columns, follow these steps:

- 1) From the **Line** drop-down list in the Separator line area, select the type of line that you want.
- 2) By default, the separator lines are the same height as the columns. If you want the separator lines to be shorter than the columns, use the **Height** spin box to enter the height of the separator lines as a percentage of the height of the columns. For example, if you enter 50%, the separator lines will be half as high as the columns.
- 3) If you entered a height of less than 100%, use the **Position** drop-down list to select a vertical alignment for the separator lines.

Reverting to a single-column layout

To revert to a single-column layout, simply reset the **Columns** spin box to 1. Or, in the Settings area, click the single-column layout that's located to the right of the **Columns** spin box.

Using the Indents tab

Use the **Indents** tab, pictured in Figure 7, to set indents in the right and left margins of the current section.

Enter the desired left-margin indent in the **Before section** spin box. Enter the desired right-margin indent in the **After section** spin box. The preview box on the right-hand side of the tab shows you how the section will look with the indents applied.

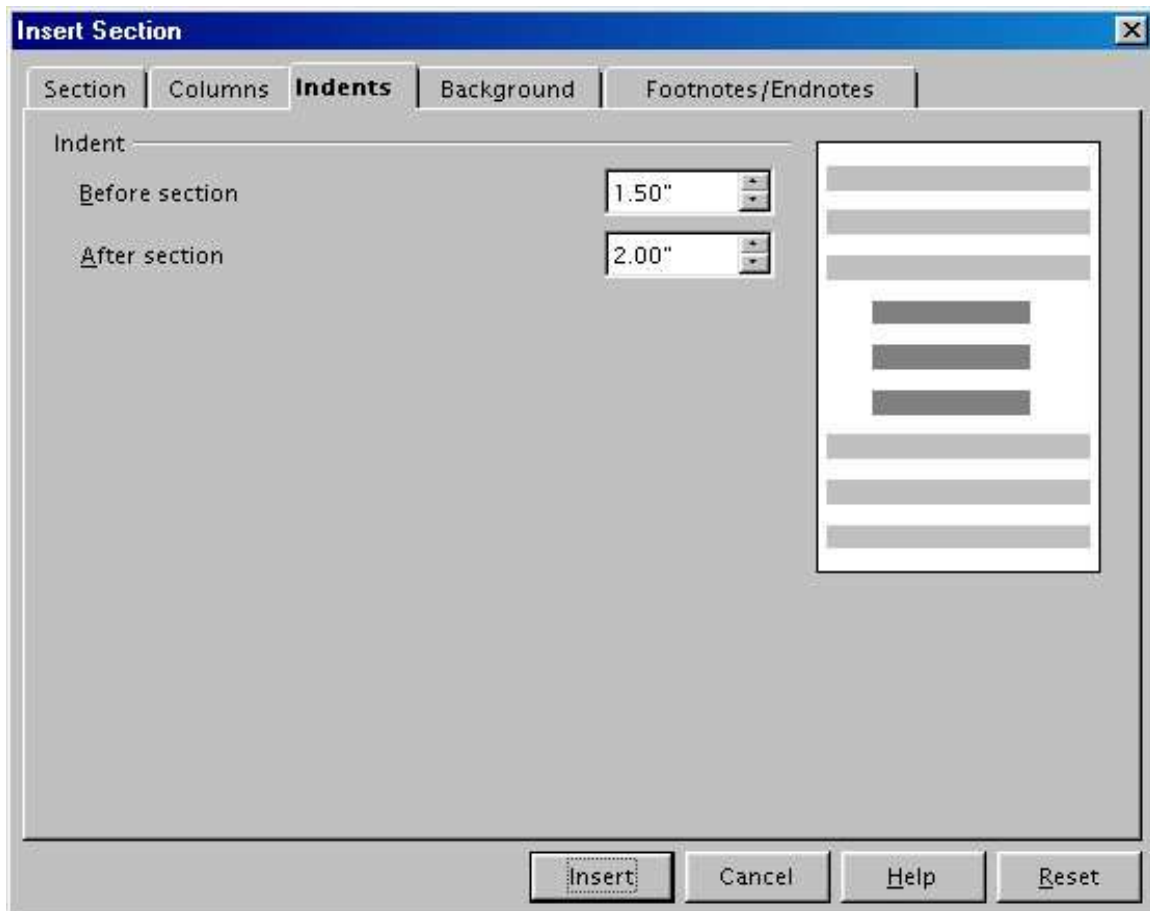


Figure 7. Indents tab of the Insert Section dialog

Using the Background tab

Use the **Background** tab, pictured in Figure 8, to add color or a graphic to the background of the current section.

Adding color

To add color to the background of the current section, simply click the desired color in the color grid.

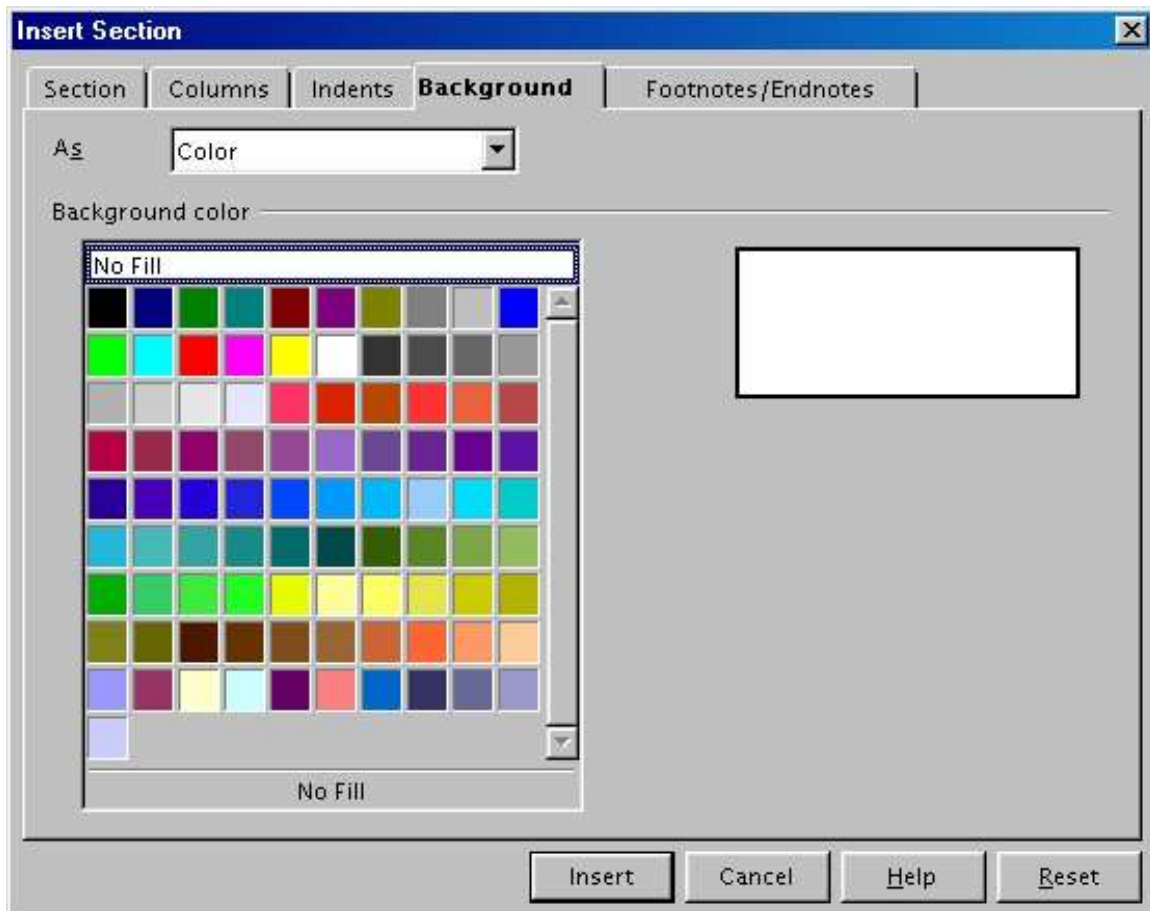


Figure 8. Background tab of the Insert Section dialog

Adding a graphic

To add a graphic to the background of the current section, follow these steps:

- 1) From the **As** drop-down list, select **Graphic**. The **Background** tab displays the graphics options. (See Figure 9.)
- 2) Click the **Browse** button. The Find Graphics window opens.
- 3) Find the graphic file that you want to use and then click the **Open** button. The Find Graphics window closes and the selected graphic appears in the graphic preview box on the right-hand side of the **Background** tab. (If you don't see the graphic, check the **Preview** checkbox underneath the graphic preview box.)

- 4) In the Type area of the **Background** tab, choose how you want the background graphic to appear:
- To position the graphic in a specific location in the background, select **Position** and then click the desired location in the position grid.
 - To stretch the graphic so that it fills the entire background area, select **Area**.
 - To repeat the graphic across the entire background area, select **Tile**.

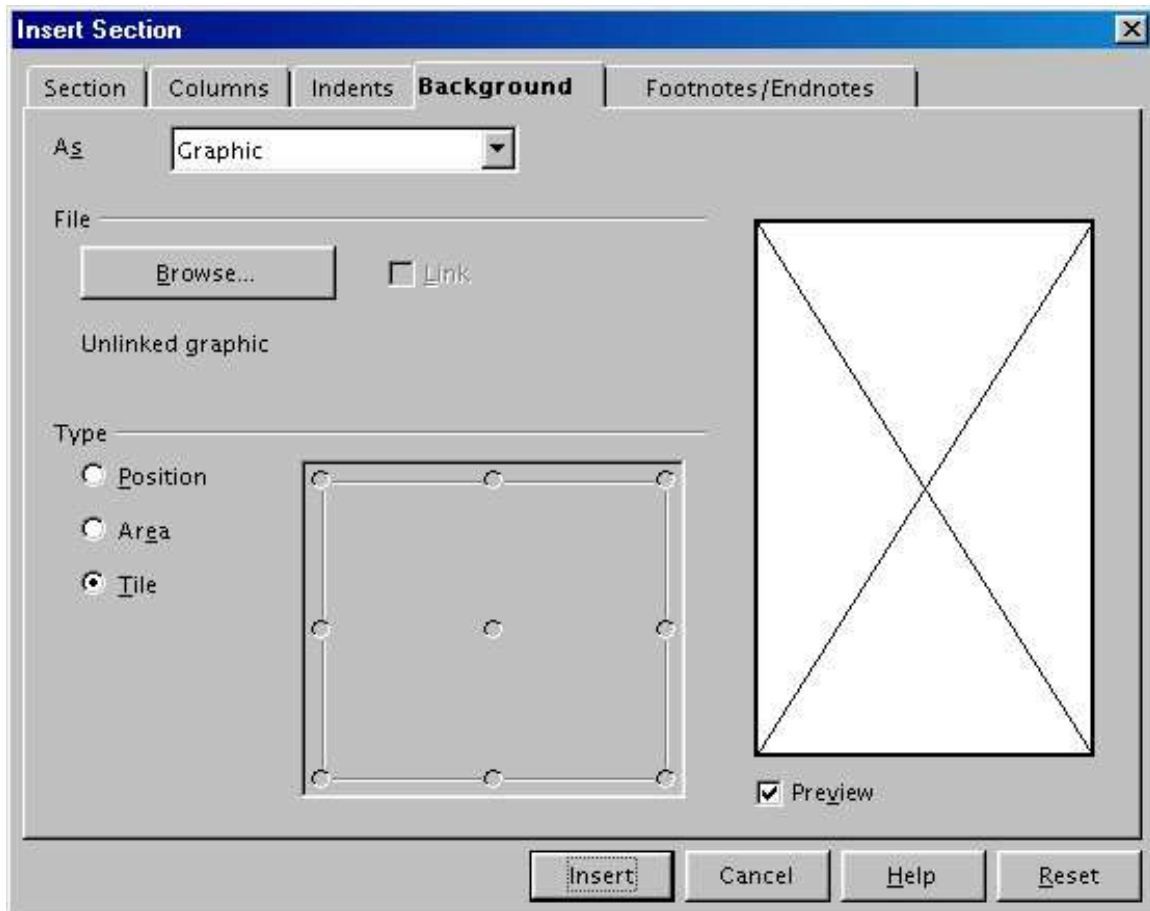


Figure 9. Graphics options on the Background tab of the Insert Section dialog

Deleting color or graphics

To delete color or graphics from the background of the current section, follow these steps:

- 1) From the **As** drop-down list, select **Color**.
- 2) Click **No Fill** on the color grid.

Using the Footnotes/Endnotes tab

Use the **Footnotes/Endnotes** tab, pictured in Figure 10, to customize the current section's footnotes and endnotes.

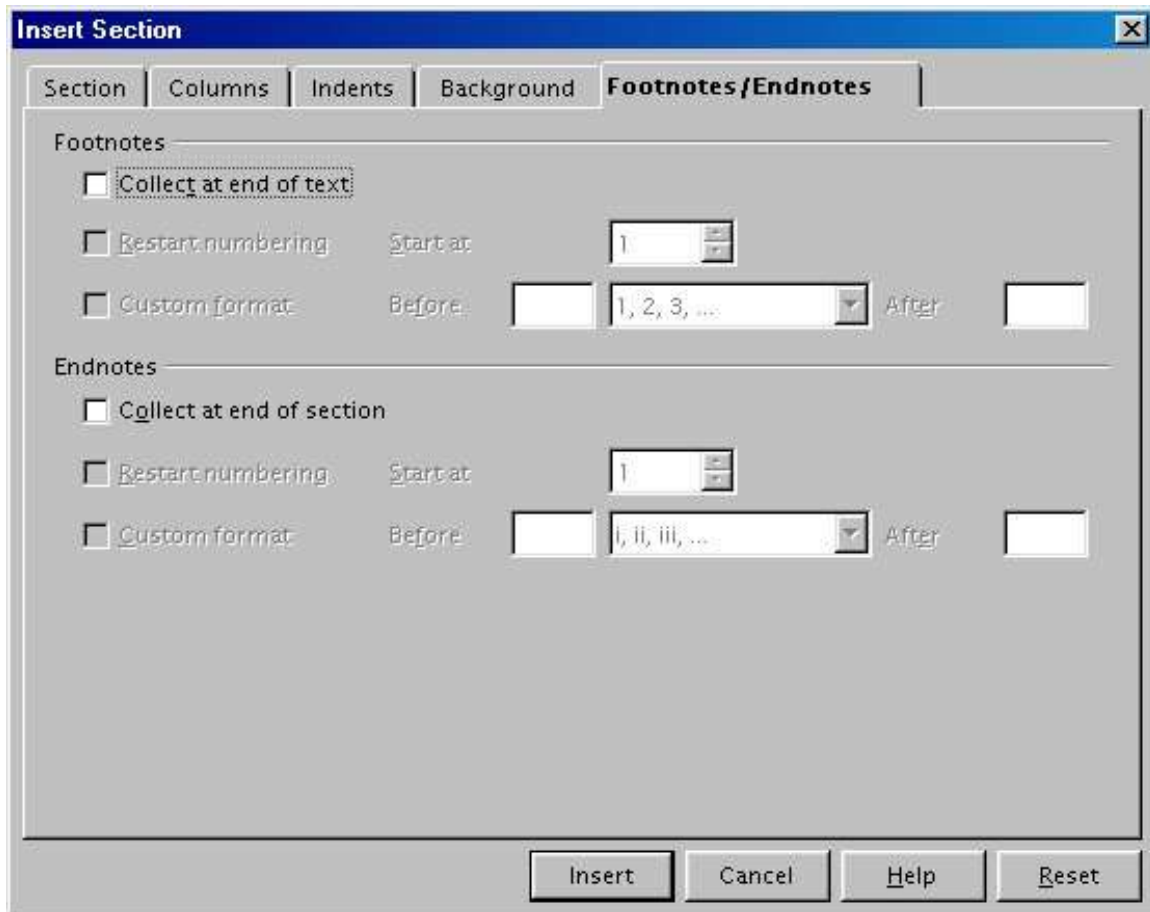


Figure 10. Footnotes/Endnotes tab of the Insert Section dialog

Customizing footnotes

If you want the current section's footnotes to appear separately from the other footnotes in the document, check the **Collect at end of text** checkbox in the Footnotes area.

To number the current section's footnotes separately from the other footnotes in the document, follow these steps:

- 1) In the Footnotes area, make sure that the **Collect at end of text** checkbox is checked.
- 2) Check the **Restart numbering** checkbox.
- 3) If you want the section's footnotes to start at a number other than 1, enter the desired starting number in the **Start at** spin box.

To edit the format of the section's footnotes, follow these steps:

- 1) In the Footnotes area, make sure that the **Collect at end of text** and **Restart numbering** checkboxes are checked.

- 2) Check the **Custom format** checkbox.
- 3) From the drop-down list to the right of the **Custom format** checkbox, select a numbering format for the footnotes.
- 4) To add text to the selected numbering format, use the **Before** and **After** fields. For example, if you want the footnote numbers to be preceded by the word “Note” and followed by a colon, fill the **Before** and **After** fields like this:

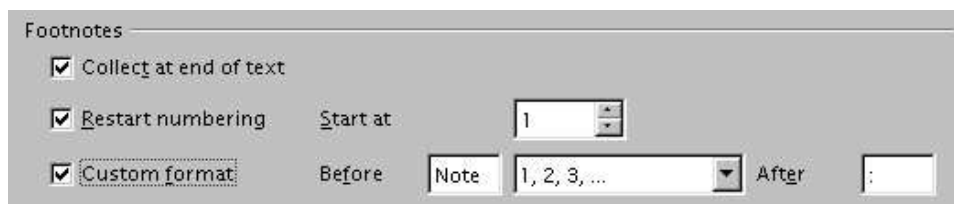


Figure 11. Customized format for footnotes

Customizing endnotes

If you want the current section’s endnotes to appear at the end of the section rather than at the end of the document, check the **Collect at end of section** checkbox in the Endnotes area.

To number the current section’s endnotes separately from the other endnotes in the document, follow these steps:

- 1) In the Endnotes area, make sure that the **Collect at end of section** checkbox is checked.
- 2) Check the **Restart numbering** checkbox.
- 3) If you want the section’s endnotes to start at a number other than 1, enter the desired starting number in the **Start at** spin box.

To edit the format of the section’s endnotes, follow these steps:

- 1) In the Endnotes area, make sure that the **Collect at end of section** and **Restart numbering** checkboxes are checked.
- 2) Check the **Custom format** checkbox.
- 3) From the drop-down list to the right of the **Custom format** checkbox, select a numbering format for the endnotes.
- 4) To add text to the selected numbering format, use the **Before** and **After** fields. For example, if you want the endnote numbers to be preceded by the word “Note” and followed by a colon, fill the **Before** and **After** fields like this:

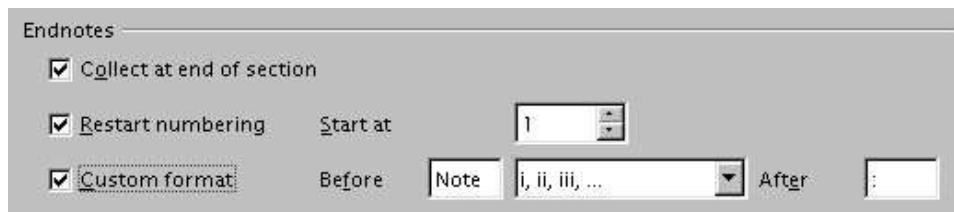


Figure 12. Customized format for endnotes

Saving a new section

To save a new section so that it appears in your document, click the **Insert** button. The Insert Section window closes and the new section appears in your document.

Maintaining sections

This part of the chapter shows you how to:

- Edit and delete sections.
- Update links.

Editing and deleting sections

You can edit a section's attributes and formatting, and you can also delete sections.

Selecting a section

To select the section that you want to edit or delete, follow these steps:

- 1) From the main menu, choose **Format > Sections...** The Edit Sections window (Figure 13) opens.
- 2) The name of the current section appears in the Section area, in the field that's above the list box. If you want to edit or delete a different section, click the name of the desired section in the list. The selected section becomes the current section, and its name appears in the field above the list box.

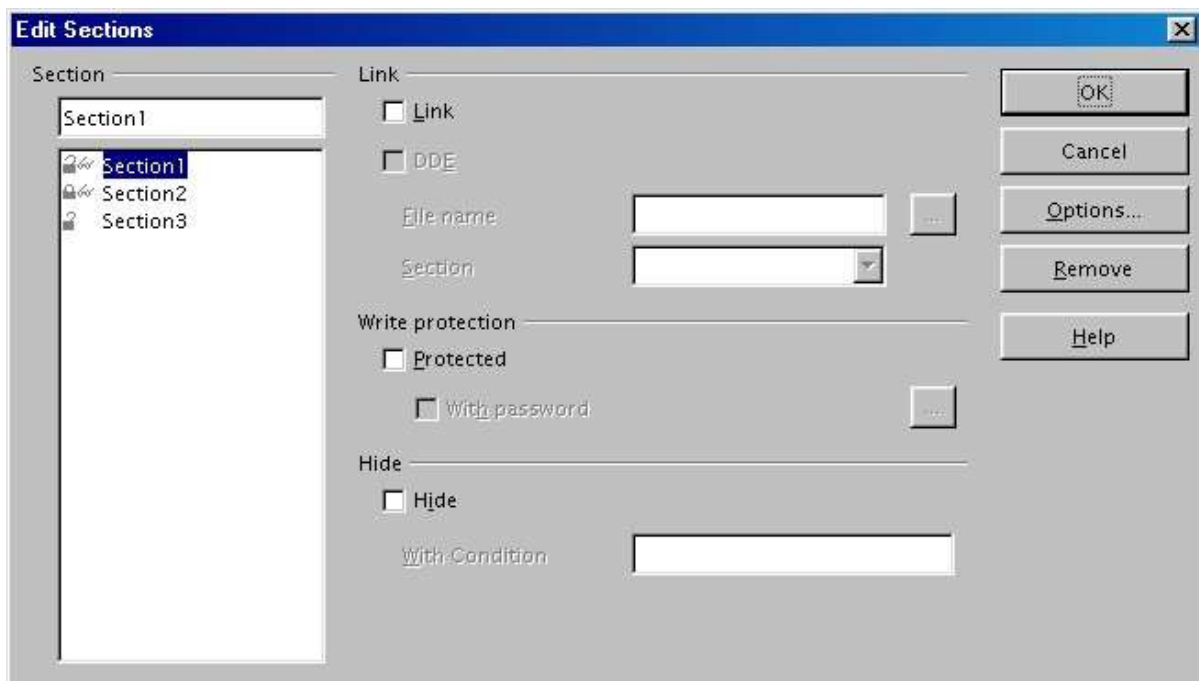


Figure 13. Edit Sections window

Editing section attributes

To rename the current section, simply type over its name in the Section area.

From the Edit Sections window, you can also edit the current section's link, write-protect, and hide attributes. To learn how to edit these attributes, see:

- “Linking sections” on page 2.
- “Write-protecting sections” on page 3.
- “Hiding sections” on page 4.

Deleting sections

To delete the current section, click the **Remove** button. (Note that Writer won't prompt you to confirm the delete! To undo a delete, click the **Cancel** button.)

Editing the format of a section

To edit the format of the current section, click the **Options...** button. The Options window (Figure 14) opens.

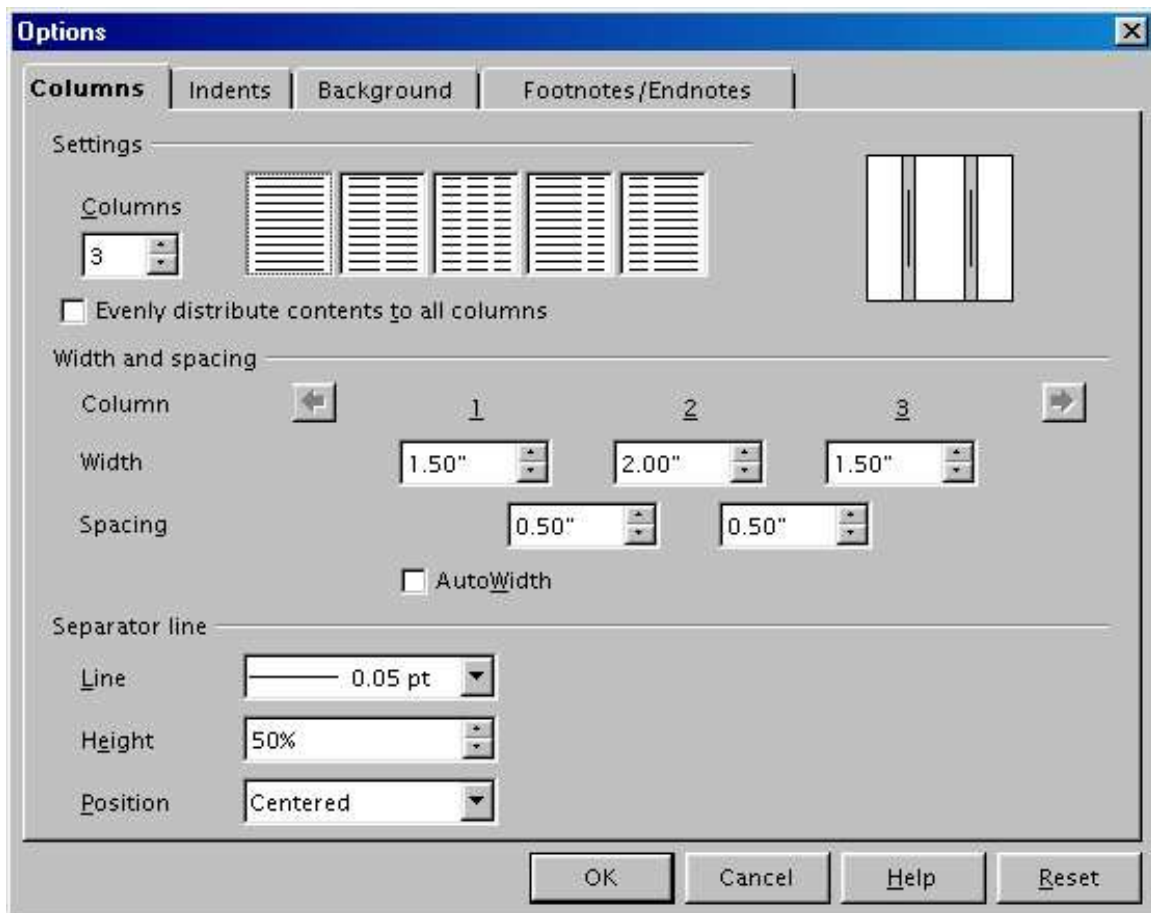


Figure 14. Options window

The Options window has four tabs: **Columns**, **Indents**, **Background**, and **Footnotes/Endnotes**. To learn how to use these tabs, see:

- “Using the Columns tab” on page 5.
- “Using the Indents tab” on page 7.
- “Using the Background tab” on page 8.
- “Using the Footnotes/Endnotes tab” on page 10.

To reset a tab to its most recently saved settings, click the **Reset** button.

To save your Options settings and return to the Edit Sections window, click **OK**.

Updating links

You can have Writer update linked sections automatically, and you can also update links manually.

Updating links automatically

By default, whenever you open a document that contains links, Writer prompts you to update the links. To have Writer update links without prompting you, or to turn off automatic updating, follow these steps:

- 1) From the main menu, choose **Tools > Options...** The Options – OpenOffice.org window (Figure 15) opens.

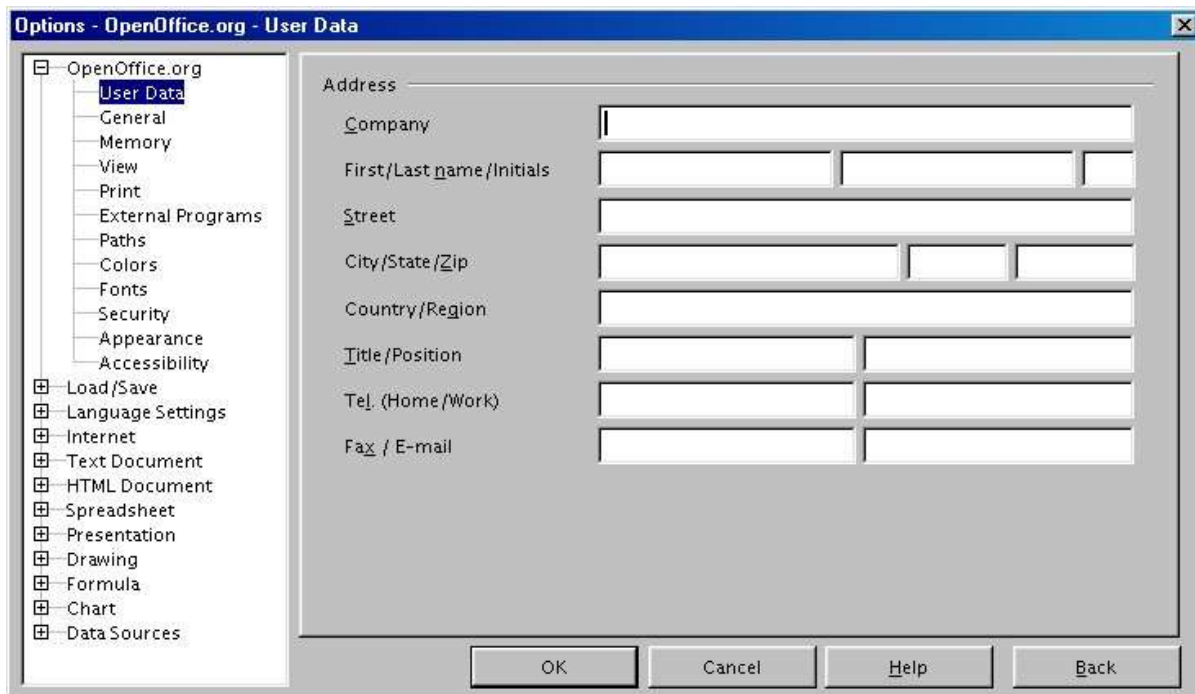


Figure 15. Options - OpenOffice.org window

- 2) In the list on the left, click the plus sign next to **Text Document**. A list of text document settings appears underneath **Text Document**.
- 3) Under **Text Document**, click **General**. The window displays general text document settings (Figure 16).

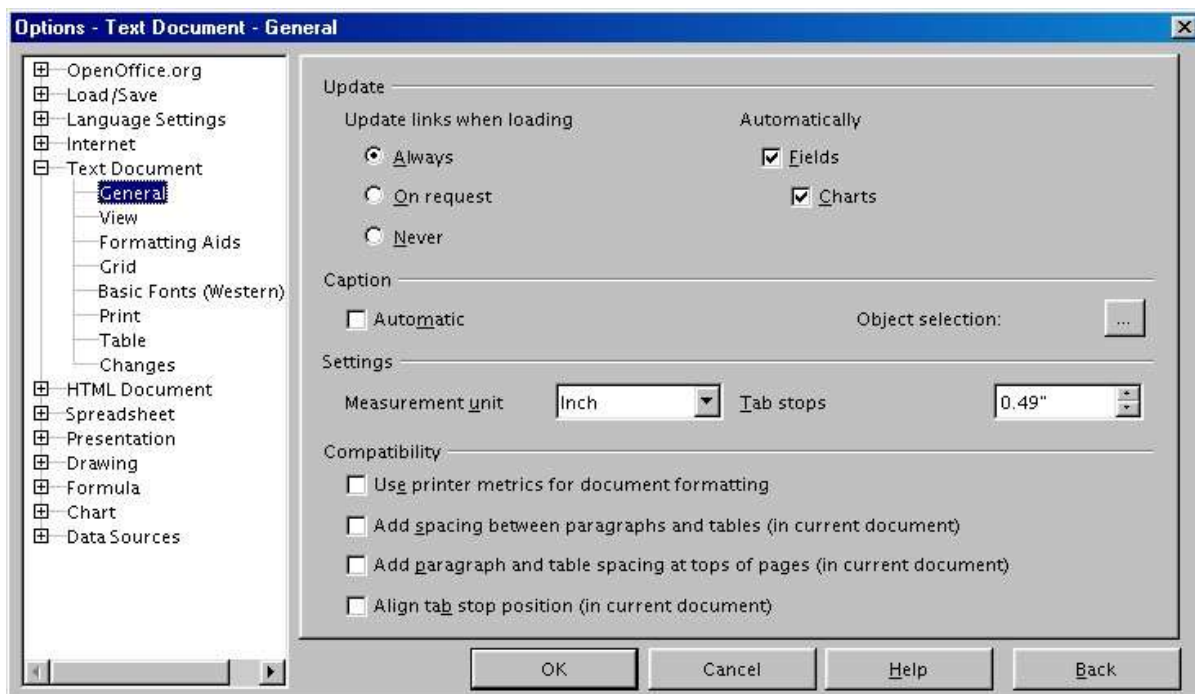


Figure 16. General text document settings

- 4) In the Update area, under **Update links when loading**, select an option:
 - Select **Always** if you want Writer to update links automatically, without prompting you, whenever you open a document that contains links.
 - Select **On request** if you want Writer to prompt you before updating links.
 - Select **Never** if you don't want Writer to update links.
- 5) Click **OK** to save your settings. The Options window closes.

Updating links manually

To update a link manually, follow these steps:

- 1) Open the document that contains the link.
- 2) From the main menu, choose **Edit > Links...** The Edit Links window opens. (See Figure 17.)
- 3) The list on the Edit Links window displays the names of all the files that are linked to the current document. Click the file that corresponds to the link that you want to update.
- 4) Click the **Update** button. The most recently saved contents of the linked file appear in the current document.

5) To close the Edit Links window, click **Close**.

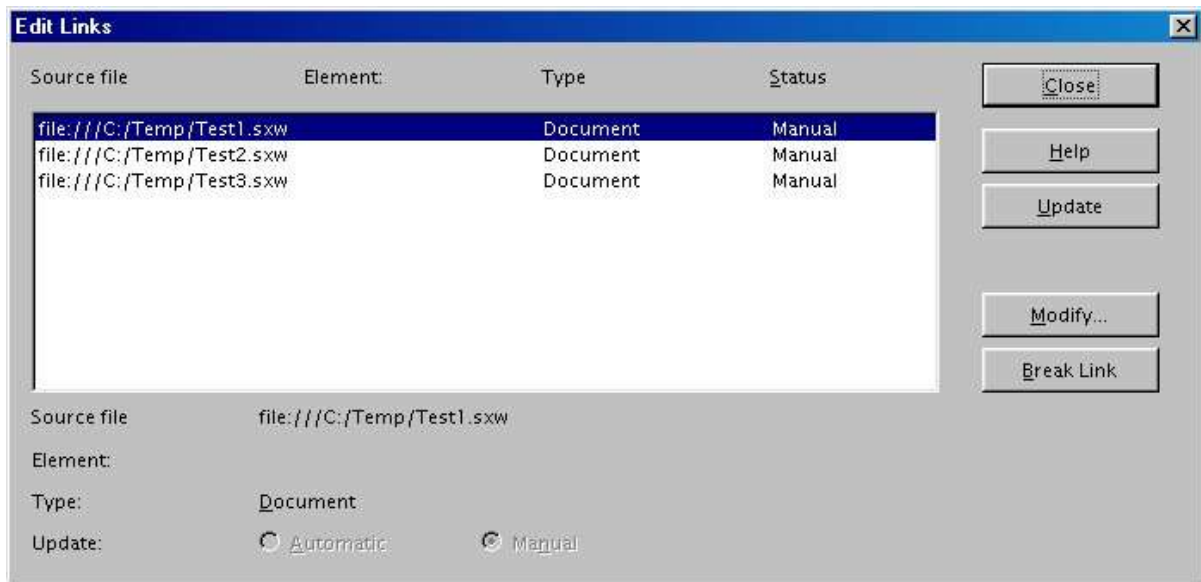


Figure 17. Edit Links window