



Page Processing

- *no-args constructor used to create new Page*
- *context, format, headers and path dependencies set*
- *request parameter values bound to matching named fields*
- **onSecurityCheck()** – called for security check
- **onInit()** – called to complete initialization
- *all the page controls are processed*
- **onGet/Post()** – called for additional processing
- **onRender()** – called for pre-render processing
- *page template and model is rendered*
- **onDestroy()** – called to clean up any resources

Template Model Includes

- *any public Page fields by field name*
- **context** – the servlet context path
- **cssImports** – the CSS style imports object
- **format** – the Format object
- **imports** – the PageImports object
- **jsImports** – the JavaScript imports object
- **messages** – the MessagesMap object
- **path** – the path of the Page template
- **request** – the HttpServletRequest object
- **response** – the HttpServletResponse object
- **session** – the SessionMap object

Velocity Directives

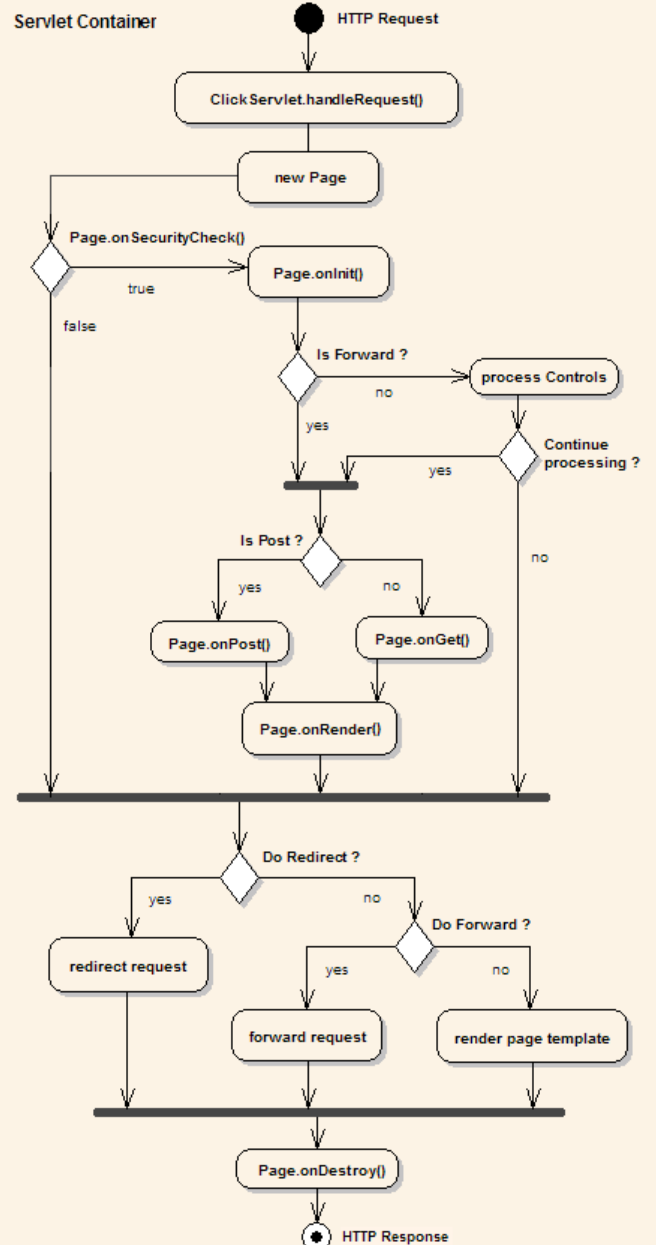
- **#if #elseif #else #end** – conditional statement
- **#foreach** – list iterator
- **#macro** – defines Velocity macro
- **#set** – variable declaration
- **#include** – include file directly without parsing
- **#parse** – parse and render the specified template
- **#stop** – stops the execution of template

Core Controls

- ActionButton
- ActionLink
- Button
- Checkbox
- Column
- FieldSet
- Form
- HiddenField
- ImageSubmit
- Label
- Option
- OptionGroup
- PageLink
- Panel
- PasswordField
- Radio
- RadioGroup
- Reset
- Select
- Submit
- Table
- TextArea
- TextField

Extras Controls

- CayenneForm
- CheckList
- ColorPicker
- CreditCardField
- DateField
- DoubleField
- EmailField
- FieldColumn
- FormTable
- IntegerField
- LinkDecorator
- ListPanel
- LongField
- Menu
- NumberField
- PageSubmit
- PickList
- PropertySelect
- QuerySelect
- RegexField
- TabbedForm
- TabbedPanel
- TelephoneField



click.xml File

```

<?xml version="1.0" encoding="UTF-8"?>
<click-app charset="UTF-8" locale="de">

  <pages package="com.mycorp.page"/>

  <mode value="debug"/>

</click-app>

```

Click App Modes

- **production** – caching, warn logging
- **profile** – caching, info logging
- **development** – info logging (default)
- **debug** – debug logging
- **trace** – trace logging